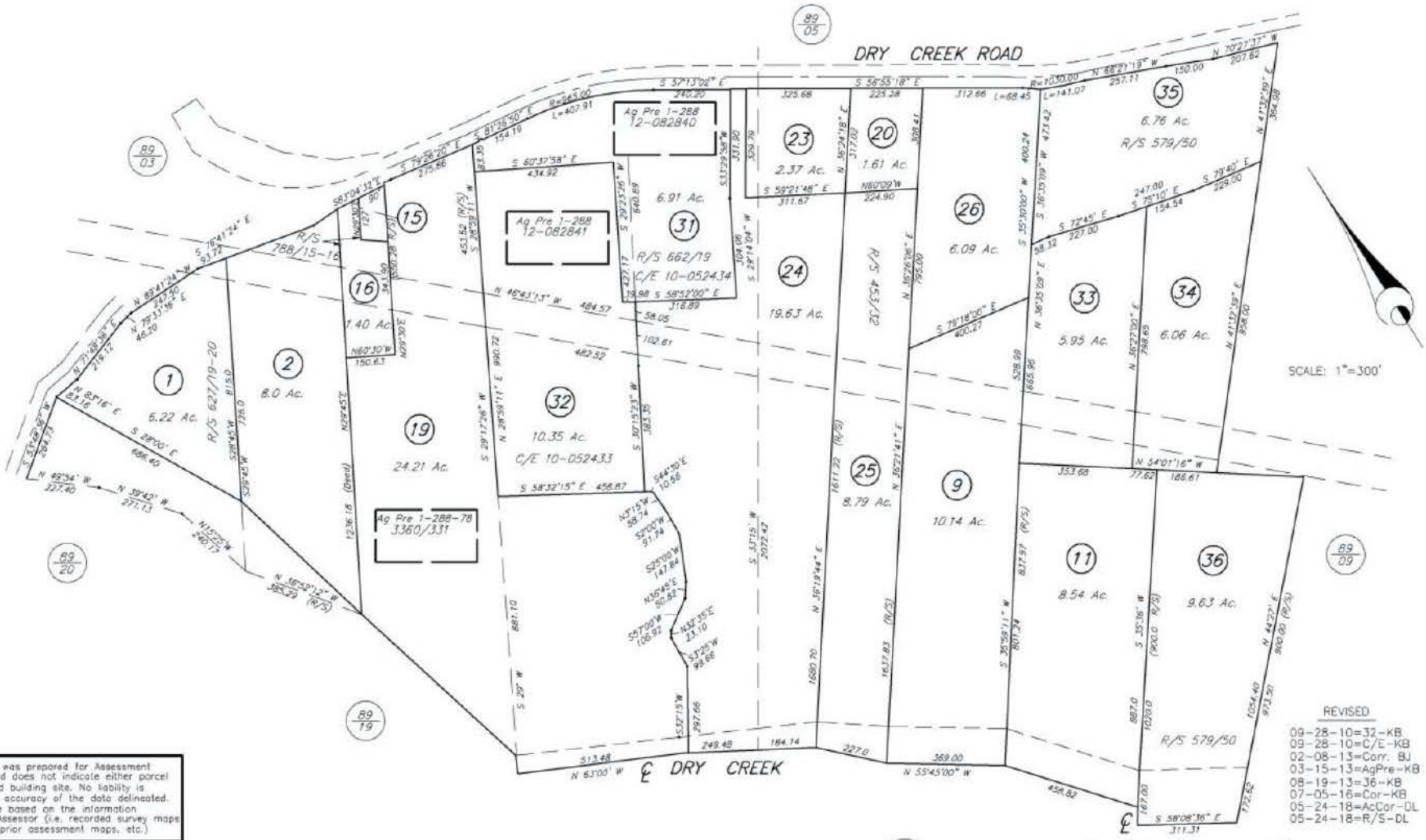


# COUNTY ASSESSOR'S PARCEL MAP

TAX RATE AREA  
97-008

089-04



SCALE: 1"=300'

NOTE: This map was prepared for Assessment purposes only and does not indicate either parcel legality or a valid building site. No liability is assumed for the accuracy of the data delineated. The acreages are based on the information supplied to the Assessor (i.e. recorded survey maps, recorded deeds, prior assessment maps, etc.)

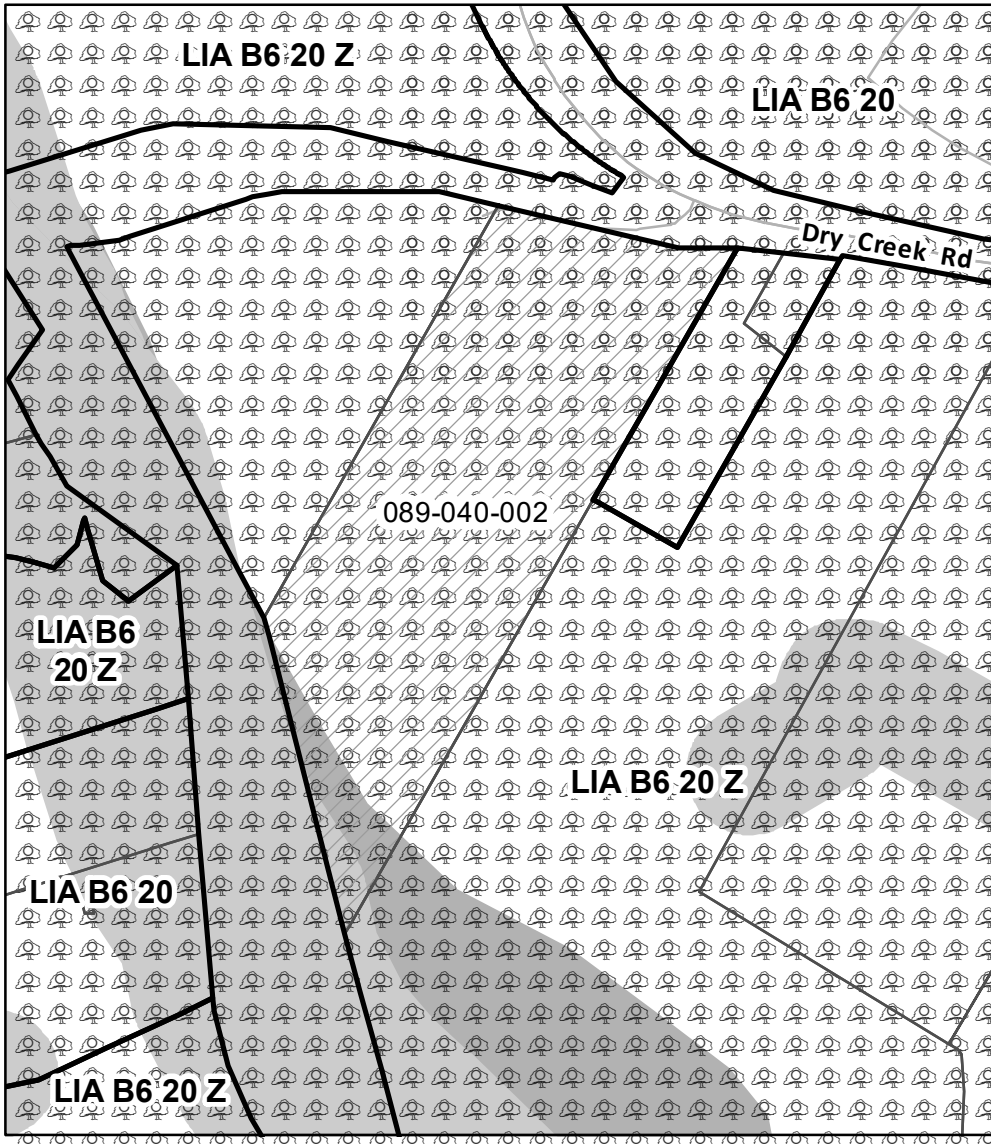
NOTE: Assessor's parcels do not necessarily constitute legal lots. To verify legal parcel status, check with the appropriate city or county community development or planning division.

- REVISED
- 09-28-10=32-KB
  - 09-28-10=C/E-KB
  - 02-08-13=Corr. BJ
  - 03-15-13=AgPre-KB
  - 08-19-13=36-KB
  - 07-05-16=Cor-KB
  - 05-24-18=AcCor-DL
  - 05-24-18=R/S-DL

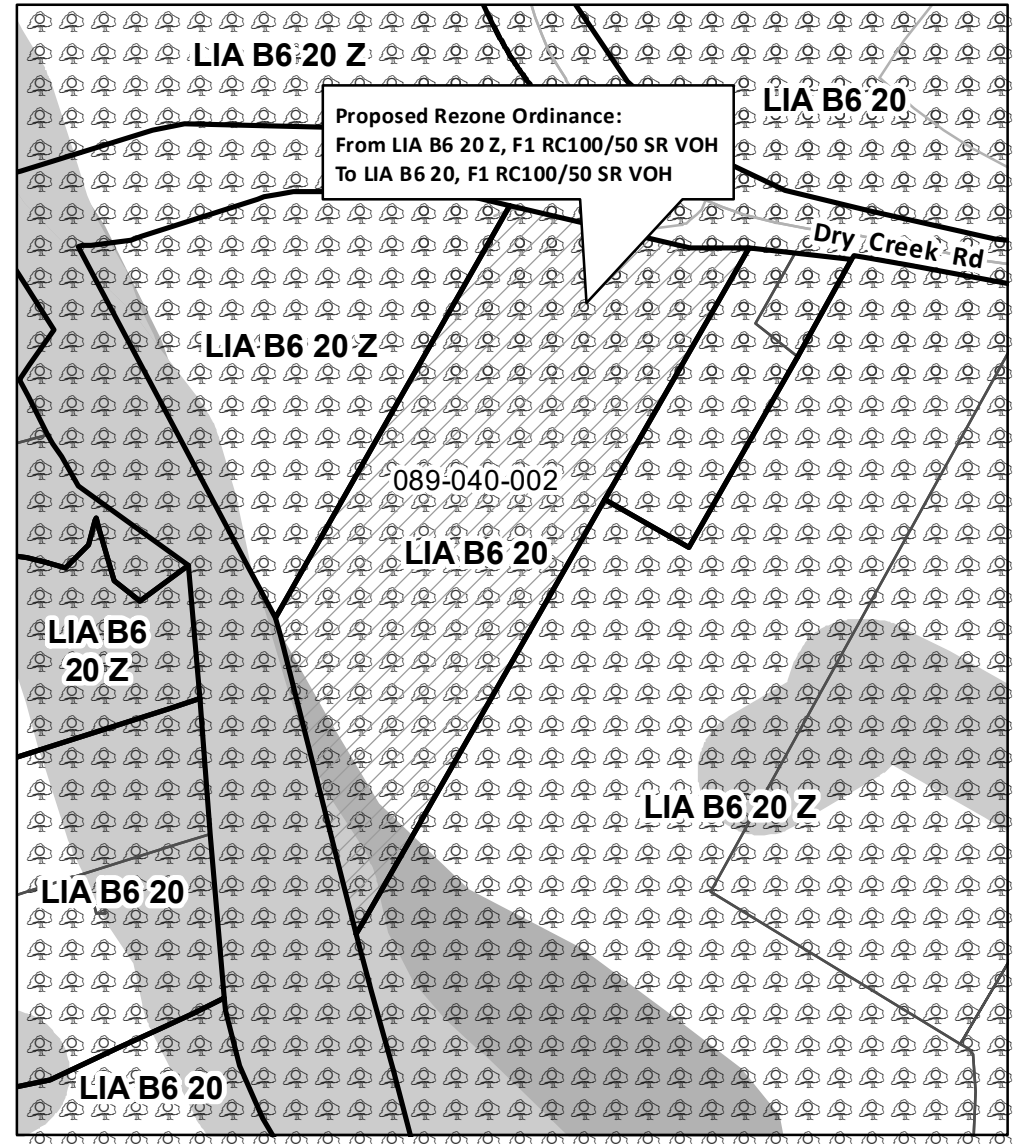
Assessor's Map Bk.089, Pg. 04  
Sonoma County, Calif. (ACAD)

KEY 5-5-09 KB





# Existing Zoning






# Proposed Zoning

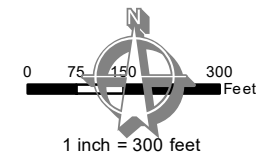


## Base Map Data

-  Subject Parcel
-  Basezoning by Area
-  Parcel
-  Street

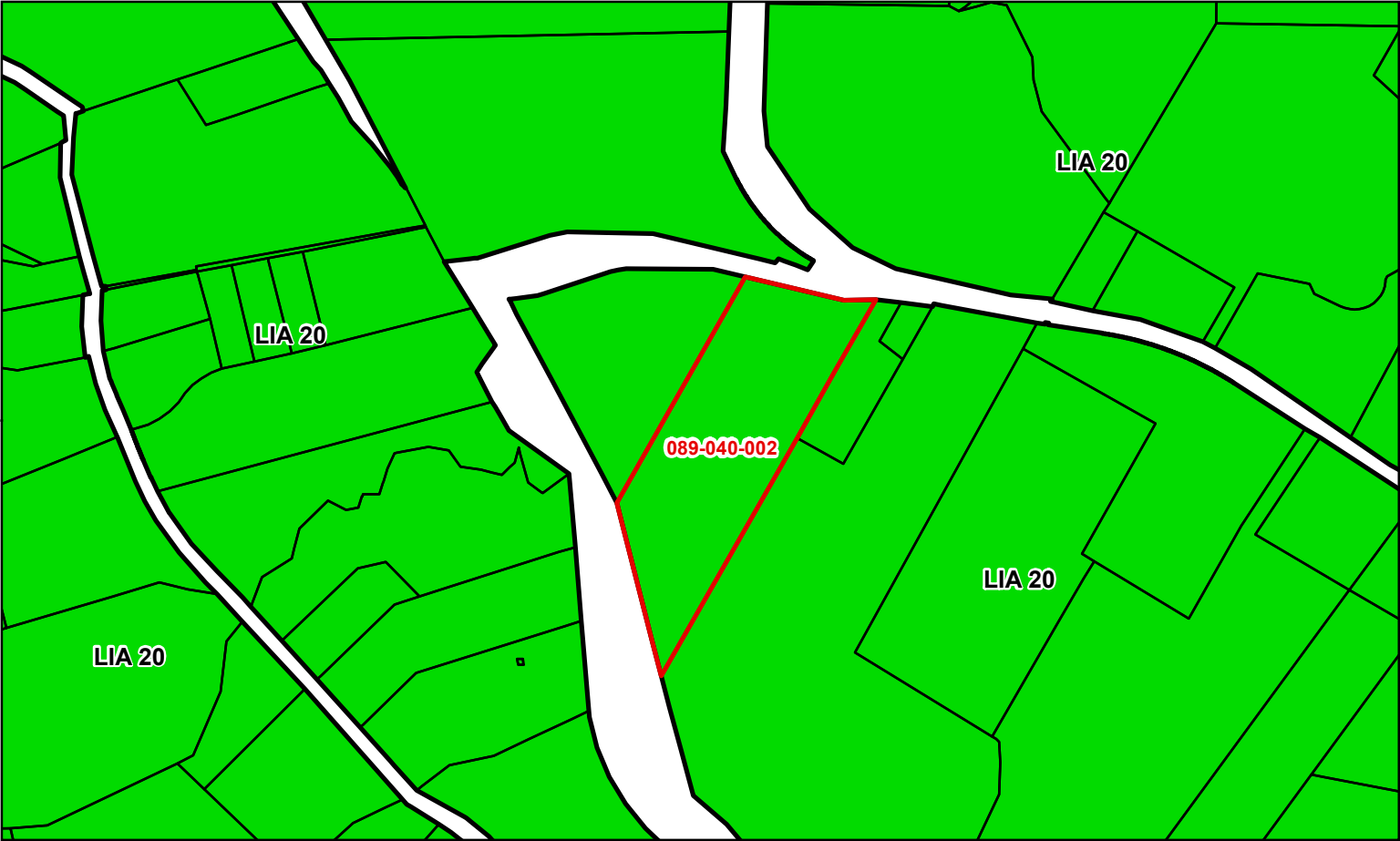
## Zoning Combining Districts

-  F1 Floodway
-  RC Riparian Corridor
-  SR Scenic Resource
-  VOH Valley Oak Habitat




FILE: ZCE22-0008  
 APN: 089-040-002  
 Ordinance No. TBA  
 Sectional District Map No. TBA

Permit and Resource Management Department  
 Project Review Section  
 2550 Ventura Avenue, Santa Rosa, CA 95403  
 (707) 565-1965 Fax (707) 565-1103



**General Plan Land Use**

 Land Intensive Agriculture

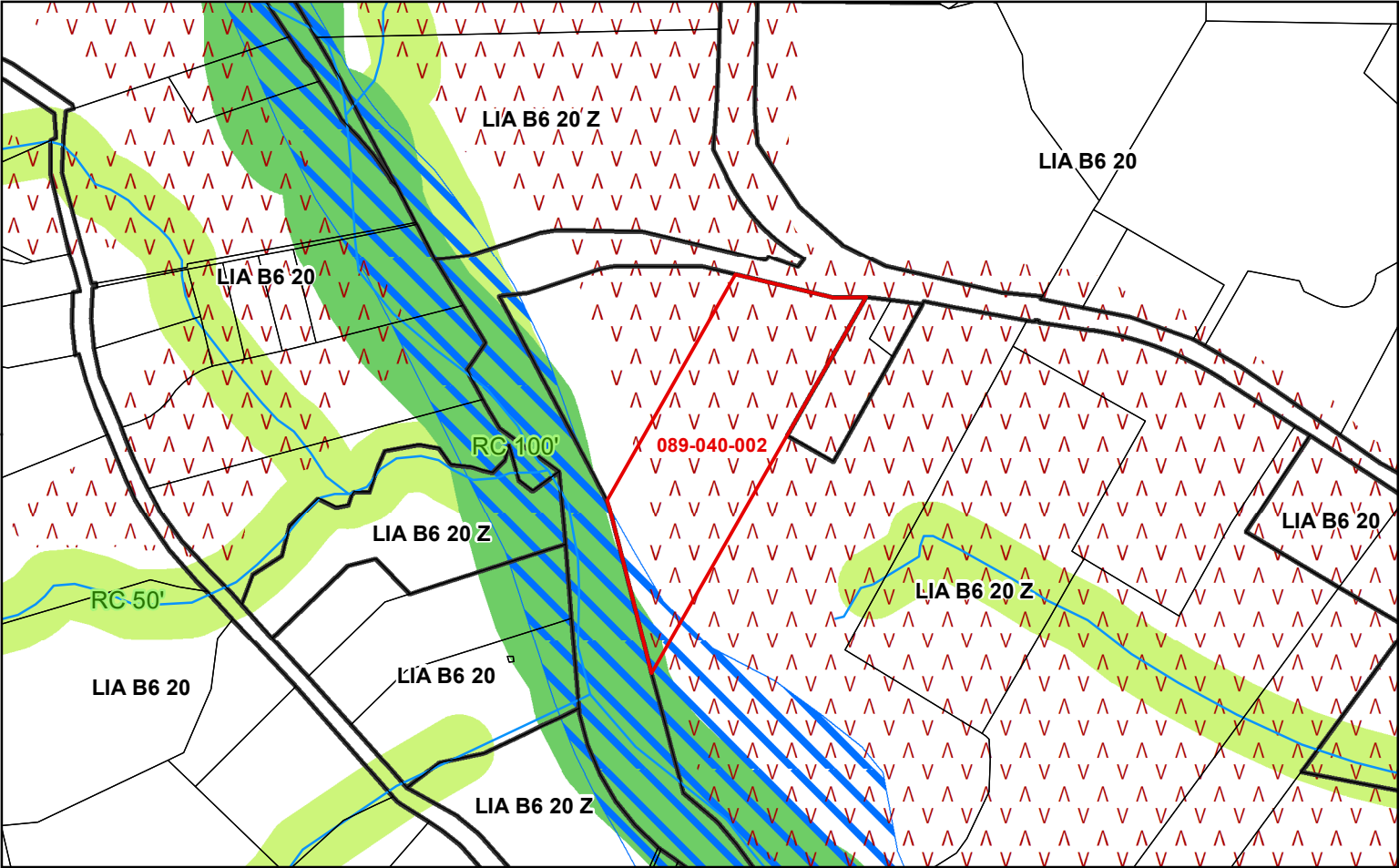
**Base Map Data**

 Parcel








1 inch equals 500 feet

Numbers on map indicate maximum density in Acres/Unit, except Urban Residential where numbers indicate Units/Acres.



**Zoning and Combining Districts**

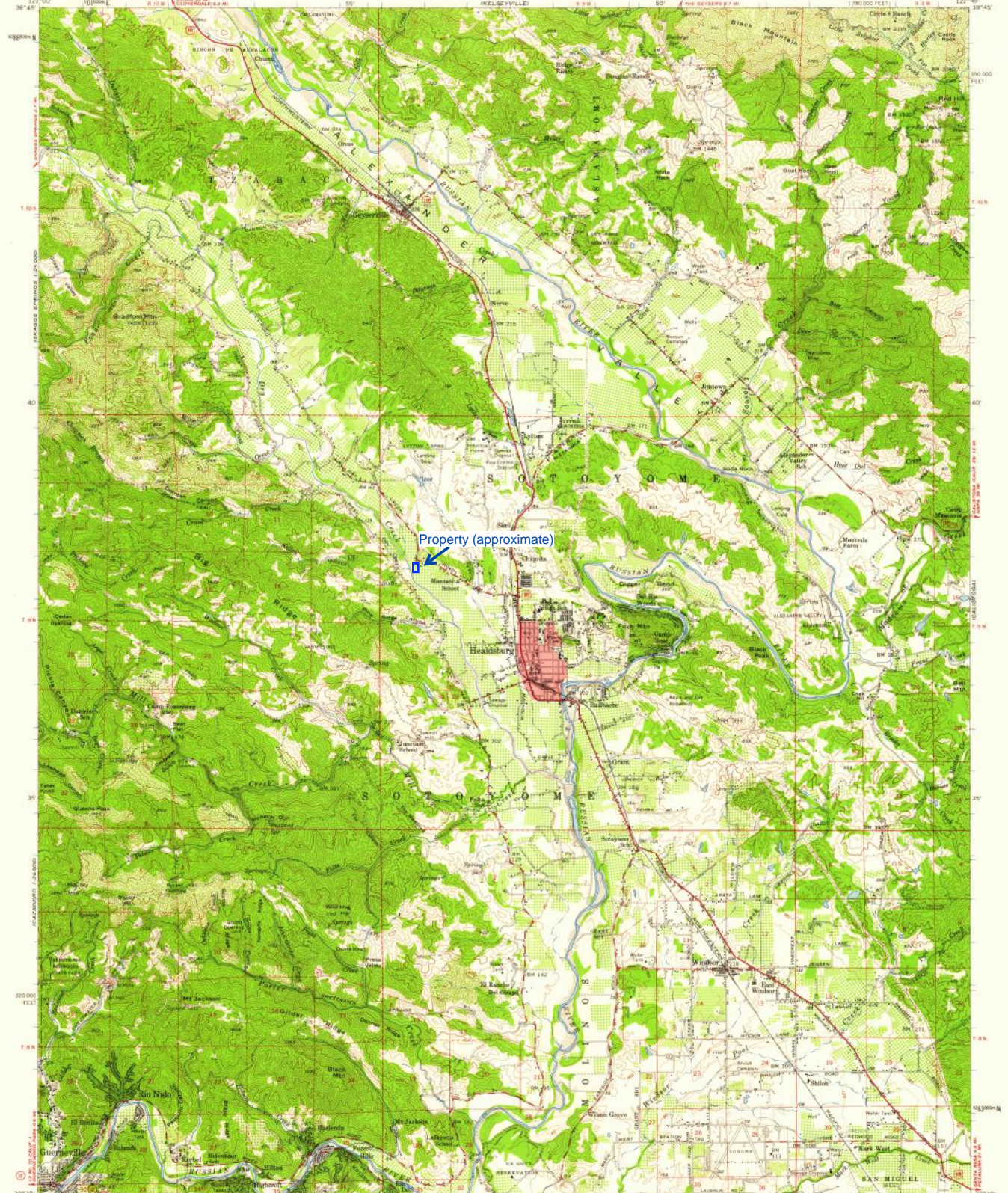
-  Zoning by Area
  -  VOH Valley Oak Habitat
  -  F1 Floodway
  -  RC Riparian Corridor (Width In Feet) 50'
  -  100'
- Full extent of this map is also SR Scenic Resource

**Base Map Data**

-  Parcel
-  USGS Streams



1 inch equals 500 feet



Property (approximate)

Mapped, edited, and published by the Geological Survey  
Control by USGS and USCGAS  
Compiled in 1958 from 1:24,000 scale maps of  
Jensen, Geopville, Guerneville, and Healdsburg  
7.5 minute quadrangles, surveyed 1955  
Topography from aerial photographs by photogrammetric methods  
and by plane-table surveys 1955. Aerial photographs taken 1953  
Proprietary projection. 1967 North American datum  
10,000-foot grid based on California coordinate system, zone 2  
3,000-meter Universal Transverse Mercator grid ticks,  
zone 10, shown in blue  
Red tint indicates areas in which only landmark buildings are shown.  
Dashed land lines indicate approximate locations.



THIS MAP COMPLIES WITH NATIONAL MAP ACCURACY STANDARDS  
FOR SALE BY U. S. GEOLOGICAL SURVEY, DENVER 25, COLORADO OR WASHINGTON 25, D. C.  
A FOLDER DESCRIBING TOPOGRAPHIC MAPS AND SYMBOLS IS AVAILABLE ON REQUEST

USGS  
Historical File  
Topographic Division

ROAD CLASSIFICATION

Heavy-duty	Light-duty
Medium-duty	Unimproved dirt
U.S. Route	State Route

U.S.G.S.  
FILE COPY  
TOPOGRAPHIC DIVISION  
HEALDSBURG, CALIF.  
N3830-W12245/15  
1955

JUL 13 1959  
3945

