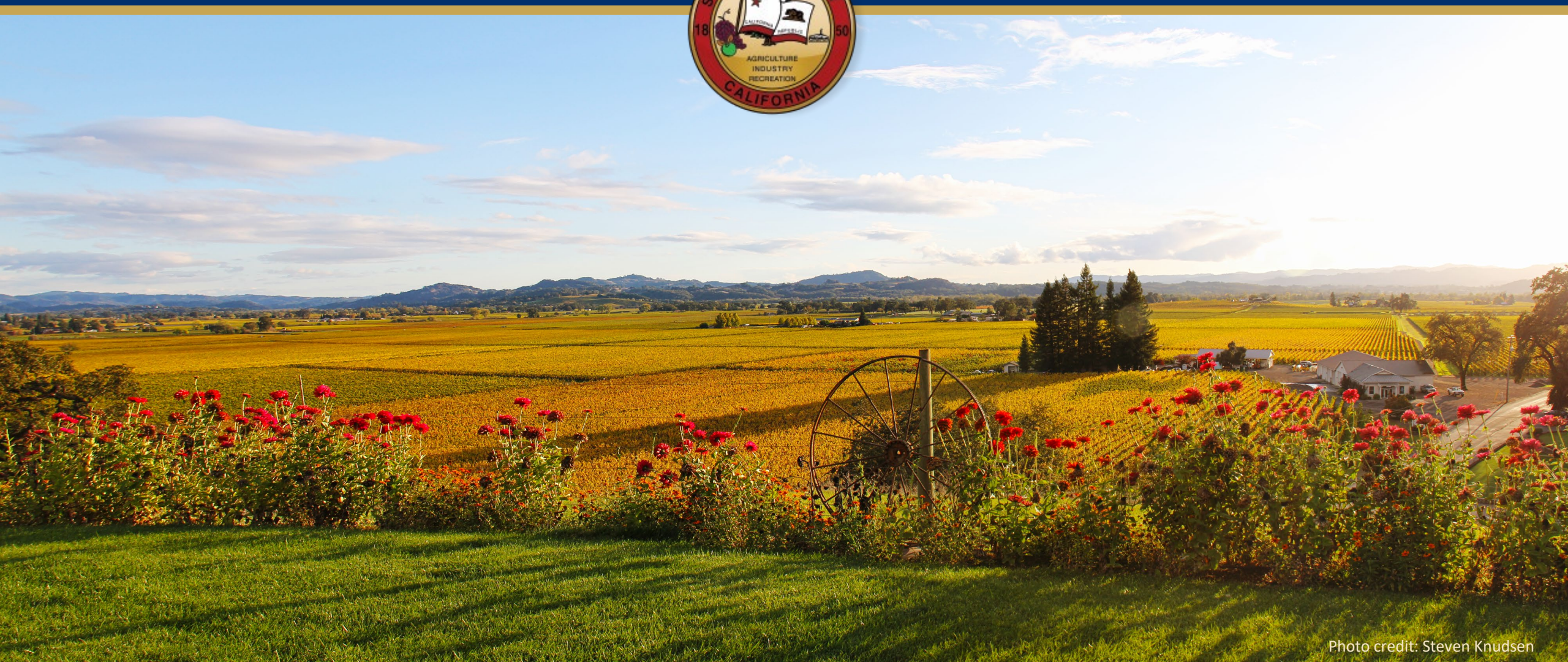


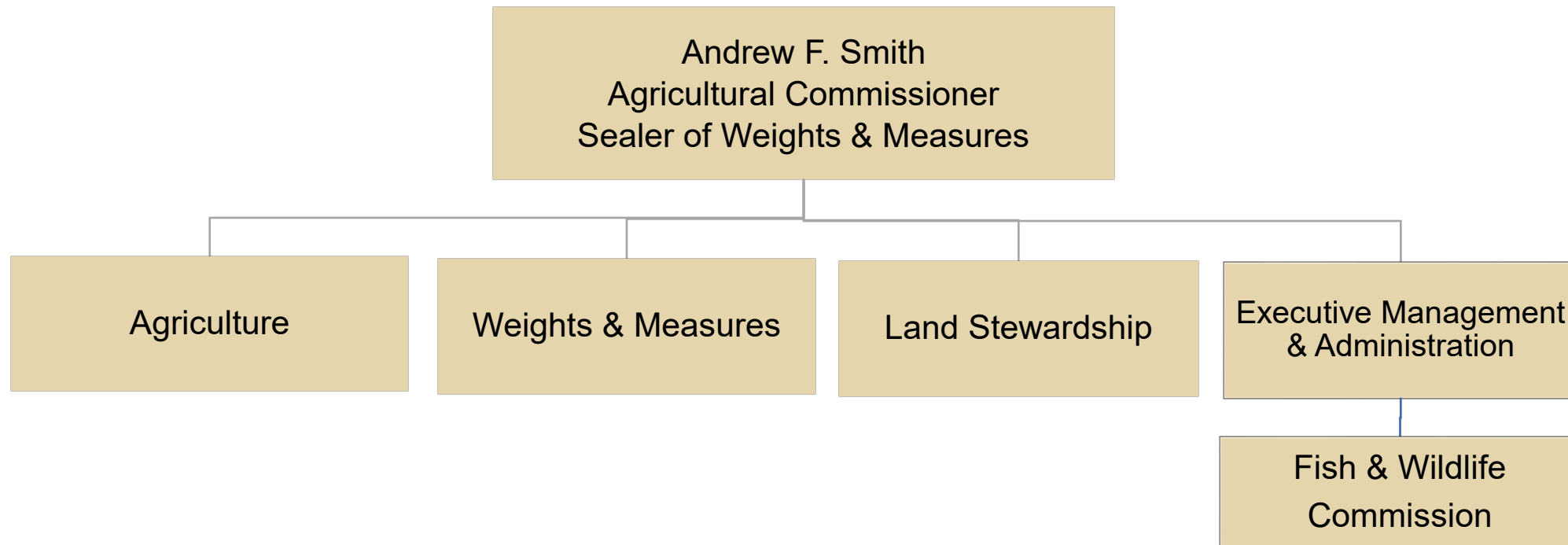
Agriculture/Weights & Measures

FY 2026-27 Preliminary Budget



Department Overview

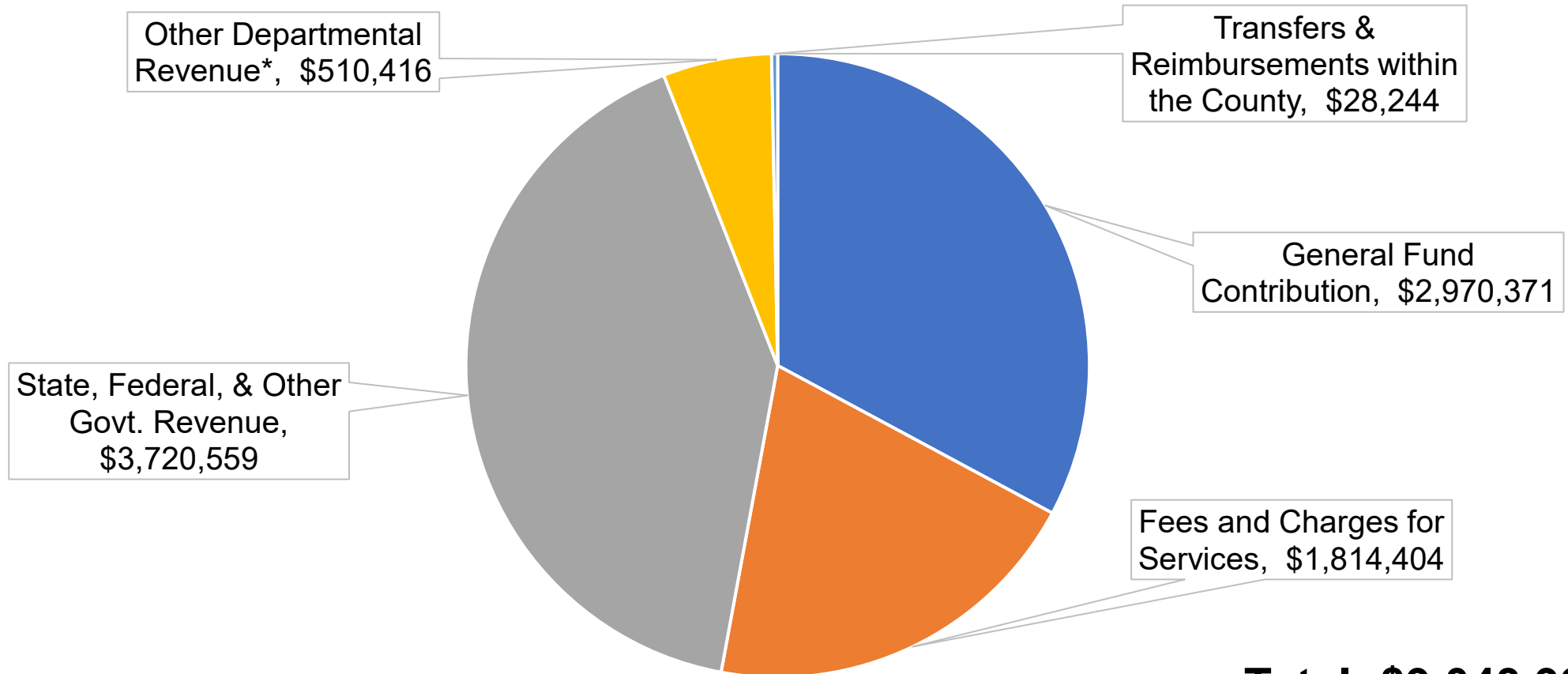
	Operating Expenditures	FTE
FY 2025-26 Adopted	\$8,869,461	40.0
FY 2026-27 Preliminary	\$9,043,995	40.0
Net Change	\$ 174,534	0.0



Departmental Expenditures

FY 2026-27 Service Area Expenditures	Preliminary Budget	FTE
Agriculture Regulation & Enforcement	\$4,610,629	19.0
Weights & Measures Regulation & Enforcement	\$1,528,017	7.0
Land Stewardship Regulation & Enforcement	\$948,143	3.0
Executive Management & Administration	\$1,902,675	11.0
Fish & Wildlife Commission	\$54,530	0
Gross Departmental Expenditures	\$9,043,995	40.0
Less Internal Departmental Transfers	\$0	n/a
Departmental Operating Expenditures	\$9,043,995	40.0

Departmental Funding Sources



Total: \$9,043,995

**Includes stipulated agreements, penalties, and fines, and interest on pooled cash.*

Key Accomplishments FY 2025-26

- Developed and implemented a proactive outreach and education campaign for Weights & Measures work toward broader awareness of and access to our programs through mixed media.
- Published an update to the Vineyard Erosion and Sediment Control Ordinance (VESCO) Best Management Practices and Technical Support Guidelines manual (BMP Manual).
- Produced Crop Report “Plus” sharing the economic impacts of agriculture on the greater county economy.

2025 By the Numbers

Weights & Measures

928 Price Verification Locations Tested
20,833 Price Verification Packages Scanned
2,497 Scales Inspected
3,463 Gas Station Pumps Inspected
73 Electric Vehicle Supply
Equipment (EVSE) Meters
Inspected



Land Stewardship (VESCO)

11 New planting permits totaling 46 acres
141 Replanting permits totaling 2,924 acres

Agriculture

91 Apiaries Registered
82 Nurseries Inspected
46,625 Insect traps serviced
17,438 Shipments Inspected
268 Pesticide Inspections



State and Federal Budget/Policy Implications

- Reductions in state revenue from federal funded programs are anticipated that will affect the County's exotic pest detection programs. The Department is collaborating with state partners to strategize how to reduce program activities while maintaining program effectiveness.

Key Challenges

- Continued uncertainty and volatility in the Agricultural Industry

Key Operational Objectives

- Continue outreach, education, and inspections of specialty markets to augment High Risk Pest Exclusion program activity in the county to protect agriculture and natural resources.
- Verify the accuracy of Electric Vehicle Supply Equipment (EVSE) charging devices used in the county.
- Continue department website redesign project to achieve greater access to and awareness of department programs, services, and transparency of department roles to enhance service delivery and expand community access.
- Expand continuing education and outreach to broader stakeholder groups to improve awareness, safety, and compliance around pesticide use.

Program Change Requests

None requested.