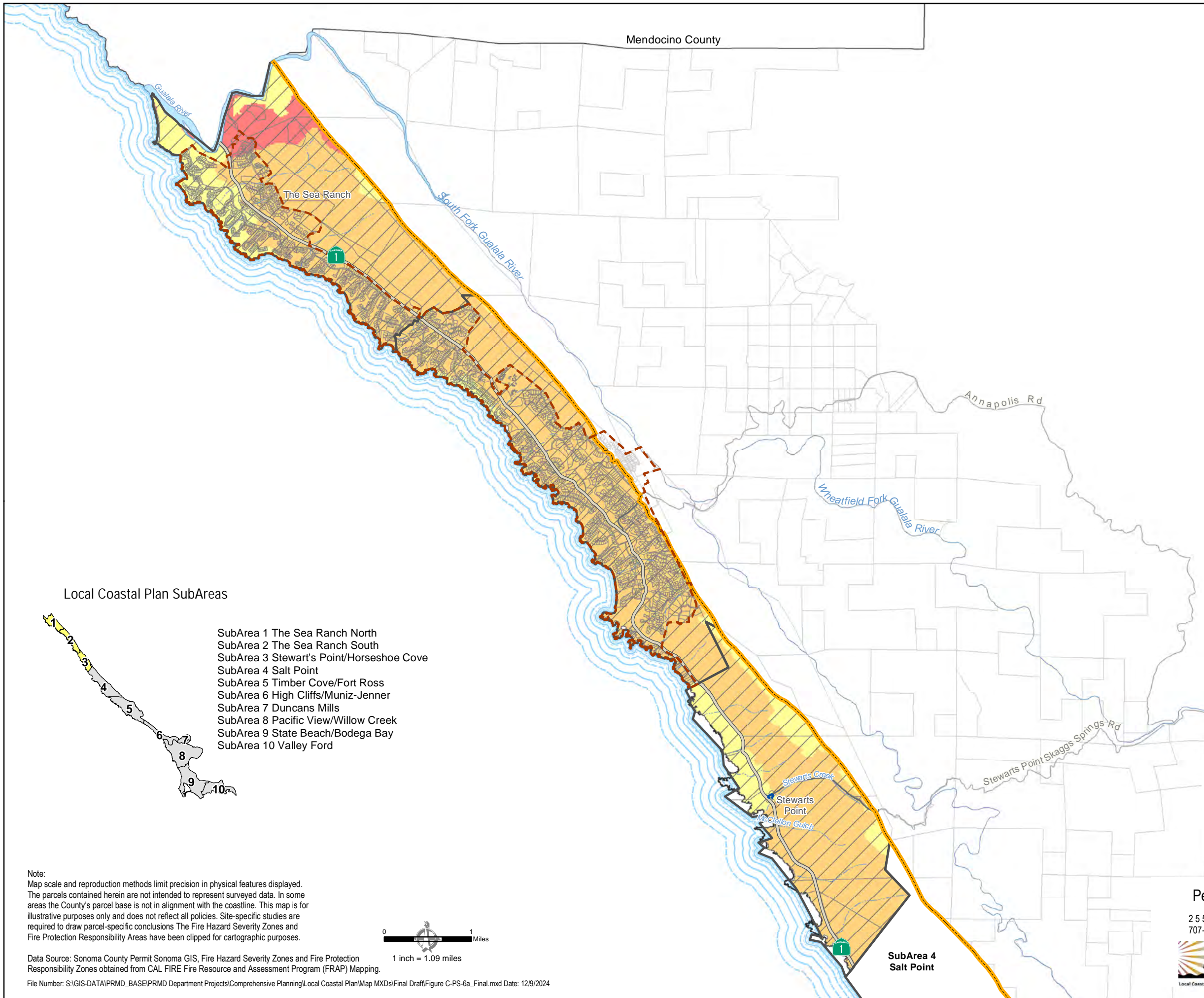


Sonoma County Local Coastal Plan Wildland Fire Threat



Fire Hazard Severity Zones

- Very High
- High
- Moderate

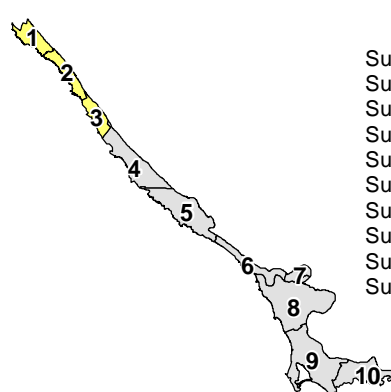
Fire Protection Responsibility Areas

- SRA

Base Map Layers

- Coastal SubArea
- Rural Community
- Urban Service Area
- Parcel
- Coastal Zone Boundary
- Natural Coastline
- Highway
- Road
- Perennial Stream
- Intermittent Stream

Local Coastal Plan SubAreas



- SubArea 1 The Sea Ranch North
- SubArea 2 The Sea Ranch South
- SubArea 3 Stewart's Point/Horseshoe Cove
- SubArea 4 Salt Point
- SubArea 5 Timber Cove/Fort Ross
- SubArea 6 High Cliffs/Muniz-Jenner
- SubArea 7 Duncans Mills
- SubArea 8 Pacific View/Willow Creek
- SubArea 9 State Beach/Bodega Bay
- SubArea 10 Valley Ford

**FIGURE C-PS-6a
Wildland Fire Threat
SubAreas 1 - 3**

Note:
Map scale and reproduction methods limit precision in physical features displayed. The parcels contained herein are not intended to represent surveyed data. In some areas the County's parcel base is not in alignment with the coastline. This map is for illustrative purposes only and does not reflect all policies. Site-specific studies are required to draw parcel-specific conclusions. The Fire Hazard Severity Zones and Fire Protection Responsibility Areas have been clipped for cartographic purposes.

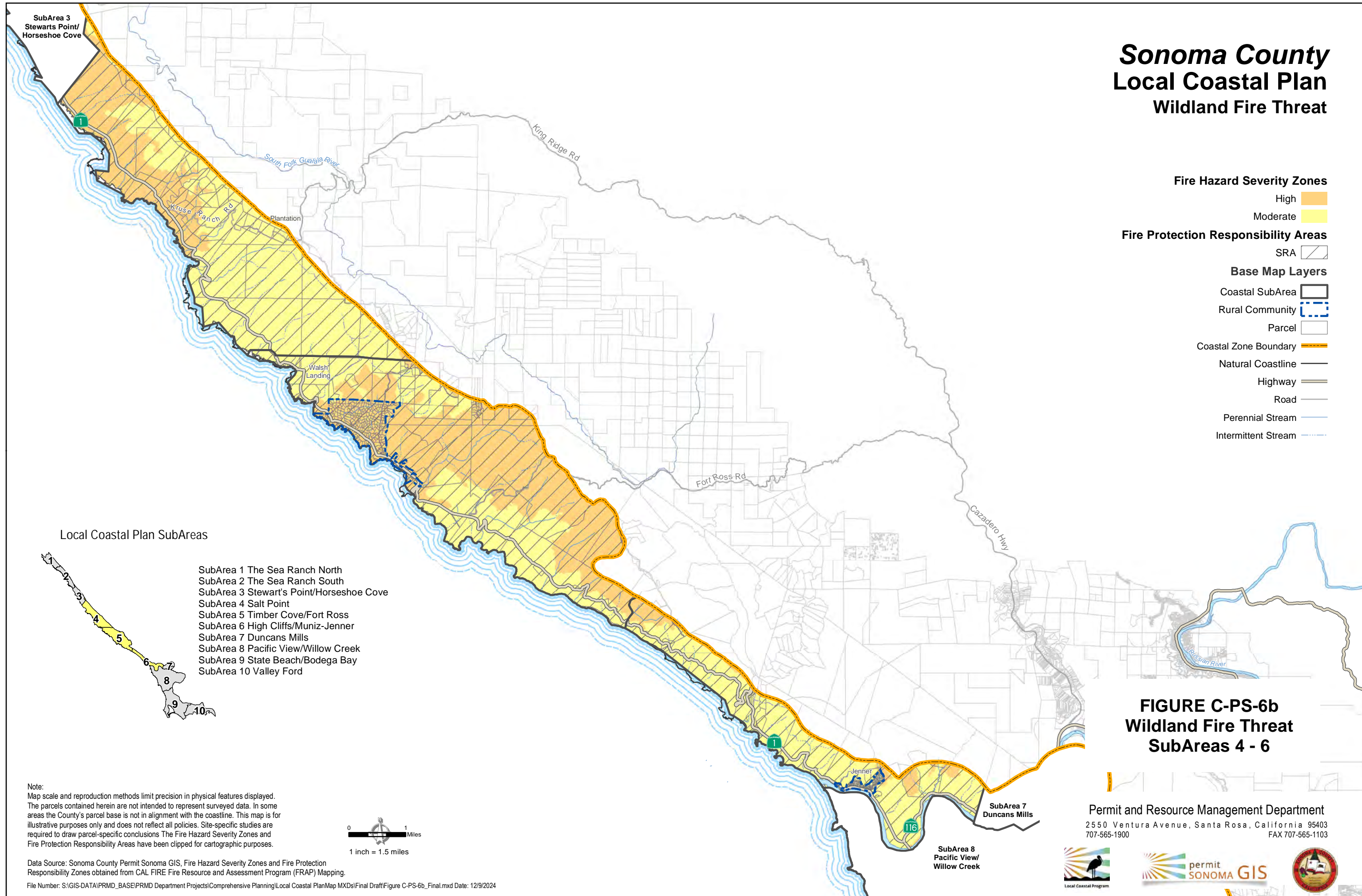


Data Source: Sonoma County Permit Sonoma GIS, Fire Hazard Severity Zones and Fire Protection Responsibility Zones obtained from CAL FIRE Fire Resource and Assessment Program (FRAP) Mapping.
File Number: S:\GIS-DATA\PRMD_BASE\PRMD Department Projects\Comprehensive Planning\Local Coastal Plan\Map MXDs\Final Draft\Figure C-PS-6a_Final.mxd Date: 12/9/2024

Permit and Resource Management Department
2550 Ventura Avenue, Santa Rosa, California 95403
707-565-1900 FAX 707-565-1103



Sonoma County Local Coastal Plan Wildland Fire Threat



Fire Hazard Severity Zones

- High
- Moderate

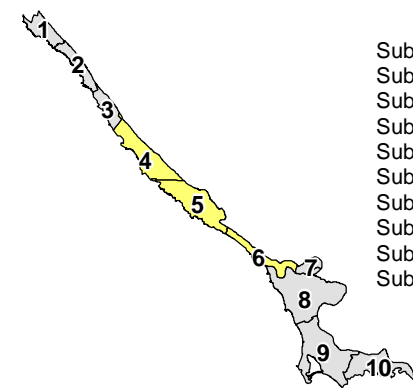
Fire Protection Responsibility Areas

- SRA

Base Map Layers

- Coastal SubArea
- Rural Community
- Parcel
- Coastal Zone Boundary
- Natural Coastline
- Highway
- Road
- Perennial Stream
- Intermittent Stream

Local Coastal Plan SubAreas



- SubArea 1 The Sea Ranch North
- SubArea 2 The Sea Ranch South
- SubArea 3 Stewart's Point/Horseshoe Cove
- SubArea 4 Salt Point
- SubArea 5 Timber Cove/Fort Ross
- SubArea 6 High Cliffs/Muniz-Jenner
- SubArea 7 Duncans Mills
- SubArea 8 Pacific View/Willow Creek
- SubArea 9 State Beach/Bodega Bay
- SubArea 10 Valley Ford

**FIGURE C-PS-6b
Wildland Fire Threat
SubAreas 4 - 6**

Note:
Map scale and reproduction methods limit precision in physical features displayed. The parcels contained herein are not intended to represent surveyed data. In some areas the County's parcel base is not in alignment with the coastline. This map is for illustrative purposes only and does not reflect all policies. Site-specific studies are required to draw parcel-specific conclusions. The Fire Hazard Severity Zones and Fire Protection Responsibility Areas have been clipped for cartographic purposes.



Data Source: Sonoma County Permit Sonoma GIS, Fire Hazard Severity Zones and Fire Protection Responsibility Zones obtained from CAL FIRE Fire Resource and Assessment Program (FRAP) Mapping.



File Number: S:\GIS-DATA\PRMD_BASE\PRMD Department Projects\Comprehensive Planning\Local Coastal Plan\Map MXDs\Final Draft\Figure C-PS-6b_Final.mxd Date: 12/9/2024

Permit and Resource Management Department
2550 Ventura Avenue, Santa Rosa, California 95403
707-565-1900 FAX 707-565-1103



Sonoma County Local Coastal Plan Wildland Fire Threat










Fire Hazard Severity Zones

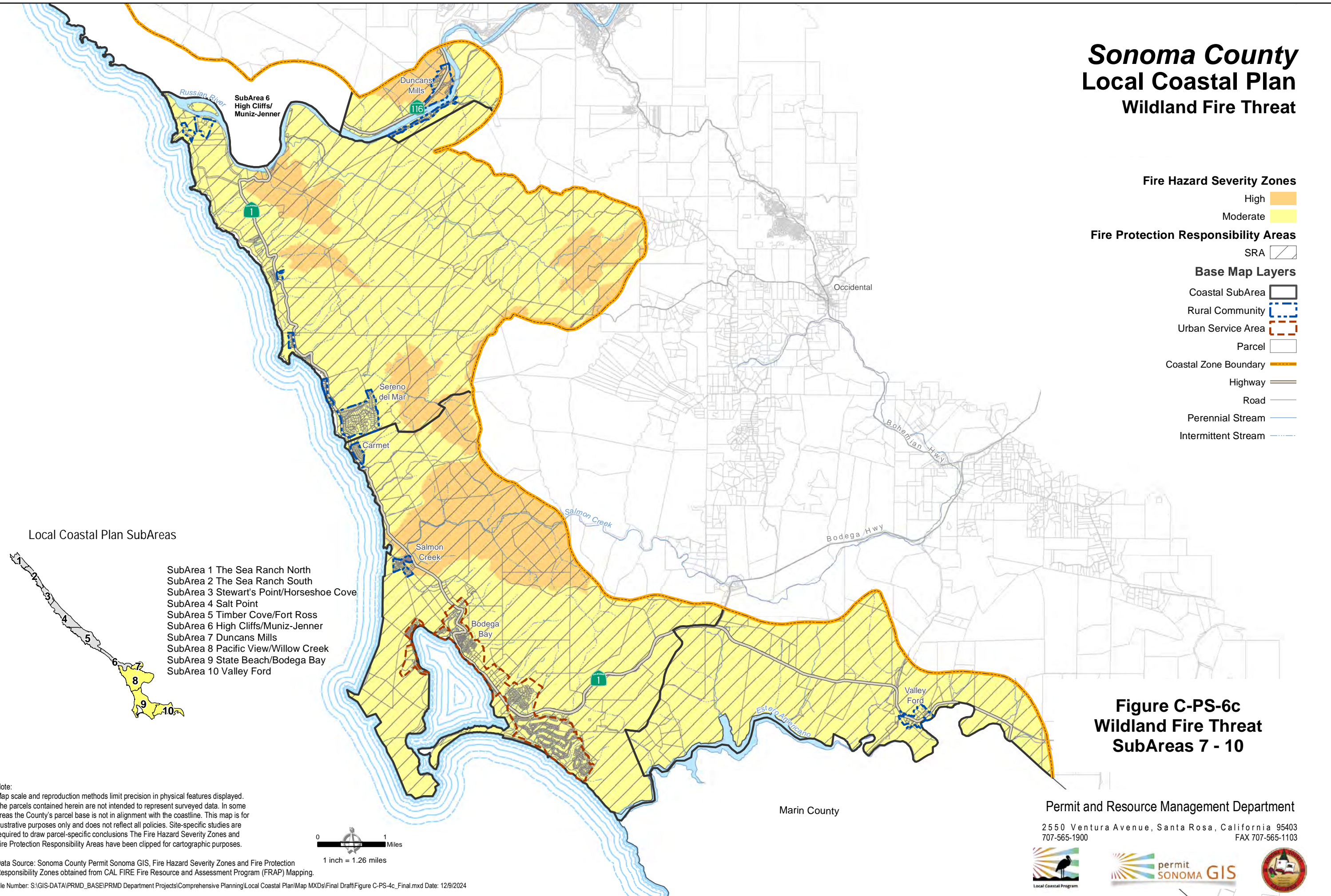
- High 
- Moderate 

Fire Protection Responsibility Areas

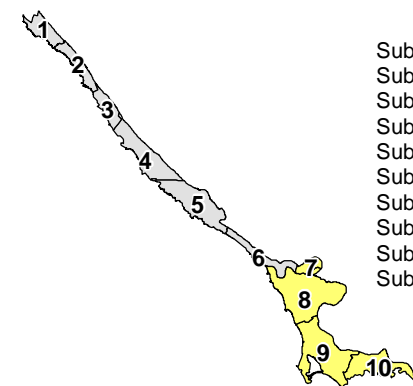
- SRA 

Base Map Layers

- Coastal SubArea 
- Rural Community 
- Urban Service Area 
- Parcel 
- Coastal Zone Boundary 
- Highway 
- Road 
- Perennial Stream 
- Intermittent Stream 



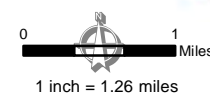
Local Coastal Plan SubAreas



- SubArea 1 The Sea Ranch North
- SubArea 2 The Sea Ranch South
- SubArea 3 Stewart's Point/Horseshoe Cove
- SubArea 4 Salt Point
- SubArea 5 Timber Cove/Fort Ross
- SubArea 6 High Cliffs/Muniz-Jenner
- SubArea 7 Duncans Mills
- SubArea 8 Pacific View/Willow Creek
- SubArea 9 State Beach/Bodega Bay
- SubArea 10 Valley Ford

**Figure C-PS-6c
Wildland Fire Threat
SubAreas 7 - 10**

Note:
Map scale and reproduction methods limit precision in physical features displayed. The parcels contained herein are not intended to represent surveyed data. In some areas the County's parcel base is not in alignment with the coastline. This map is for illustrative purposes only and does not reflect all policies. Site-specific studies are required to draw parcel-specific conclusions. The Fire Hazard Severity Zones and Fire Protection Responsibility Areas have been clipped for cartographic purposes.



Data Source: Sonoma County Permit Sonoma GIS, Fire Hazard Severity Zones and Fire Protection Responsibility Zones obtained from CAL FIRE Fire Resource and Assessment Program (FRAP) Mapping.

File Number: S:\GIS-DATA\PRMD_BASE\PRMD Department Projects\Comprehensive Planning\Local Coastal Plan\Map MXDs\Final Draft\Figure C-PS-4c_Final.mxd Date: 12/9/2024

Marin County

Permit and Resource Management Department

2550 Ventura Avenue, Santa Rosa, California 95403
707-565-1900 FAX 707-565-1103

