



County Administrator's Office Office of County Counsel

2021 Redistricting - Public Hearing #3

November 2, 2021

Recommended Action

- Conduct public hearing to receive and consider draft maps recommended by the Advisory Redistricting Commission

Today's Presentation

- Recent redistricting activity (staff)
- Redistricting rules and goals (National Demographics Corp)
- Recommended map from the Advisory Redistricting Commission (ARC Chair and Vice Chair)

Draft Maps Process

- Public input and draft maps were received through October 15 by the Advisory Redistricting Commission to inform the creation of the initial draft maps
- The initial draft maps were modified over the course of two Advisory Redistricting Commission meetings
- The maps are still draft. The public may continue to provide input on draft maps to the Board of Supervisors or to redistricting2021@sonoma-county.org through November 19th
- The Board of Supervisors may choose to provide direction on map modifications today and at the November 16th meeting

Recent Activity

Date (2021)	Description
September 20	Official California redistricting data released
October 5	Board of Supervisors – 2nd public hearing
October 15	Deadline for public input to ARC for consideration in draft maps
October 18	ARC meeting #6 to receive initial draft maps based on public input
October 22	ARC meeting #7 to narrow draft maps
October 25	ARC meeting #8 to decide on maps to recommend to Board of Supervisors
November 2	Board of Supervisors – 3rd public hearing

ARC: Advisory Redistricting Commission

Upcoming Key Dates

Date (2021)	Description
November 2	Board of Supervisors – 3rd public hearing
November 4	Last day to receive input for next revision of maps
November 9	Revised map(s) posted
November 16	Board of Supervisors – 4th public hearing
November 19	Last day to receive input for final map
November 30	Final map posted
December 7	Board of Supervisors – 5th public hearing; introduce ordinance to adopt map
December 14	Board of Supervisors – adopt ordinance on consent
December 15	Statutory deadline to adopt map

Redistricting Rules and Goals

1. Federal Laws

- Equal Population
- Federal Voting Rights Act
- No Racial Gerrymandering

2. California Criteria for Counties

To the extent practicable:

1. Geographically contiguous
2. Undivided neighborhoods and “communities of interest”
(Socio-economic geographic areas that should be kept together)
3. Cities and Census-designated places
4. Easily identifiable boundaries
5. Compact
(Do not bypass one group of people to get to a more distant group of people)

Prohibited:

“Shall not favor or discriminate against a political party.”

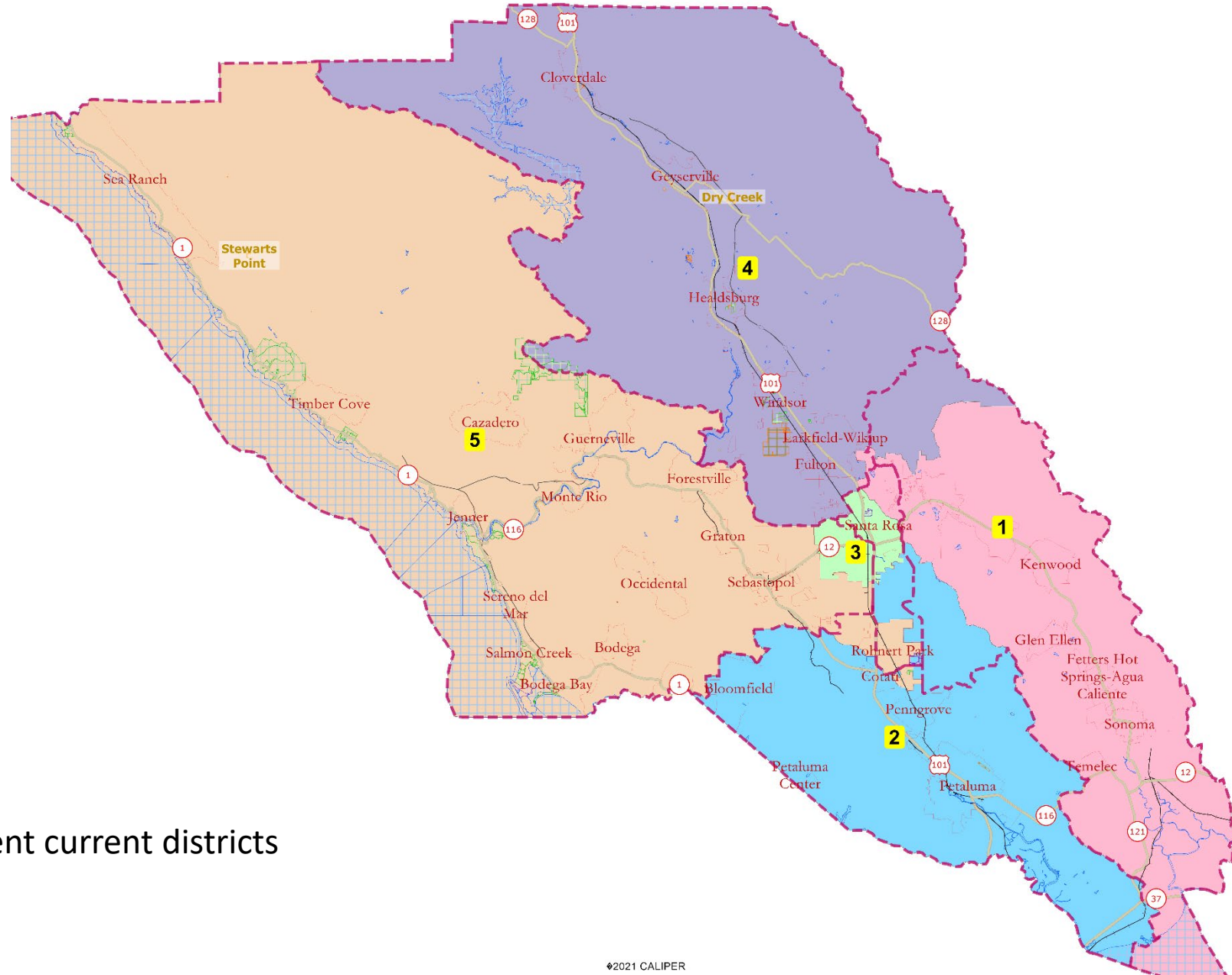
3. Other Traditional Redistricting Principles

- Minimize voters shifted to different election years
- Respect voters’ choices / continuity in office
- Future population growth
- Preserving the core of existing districts

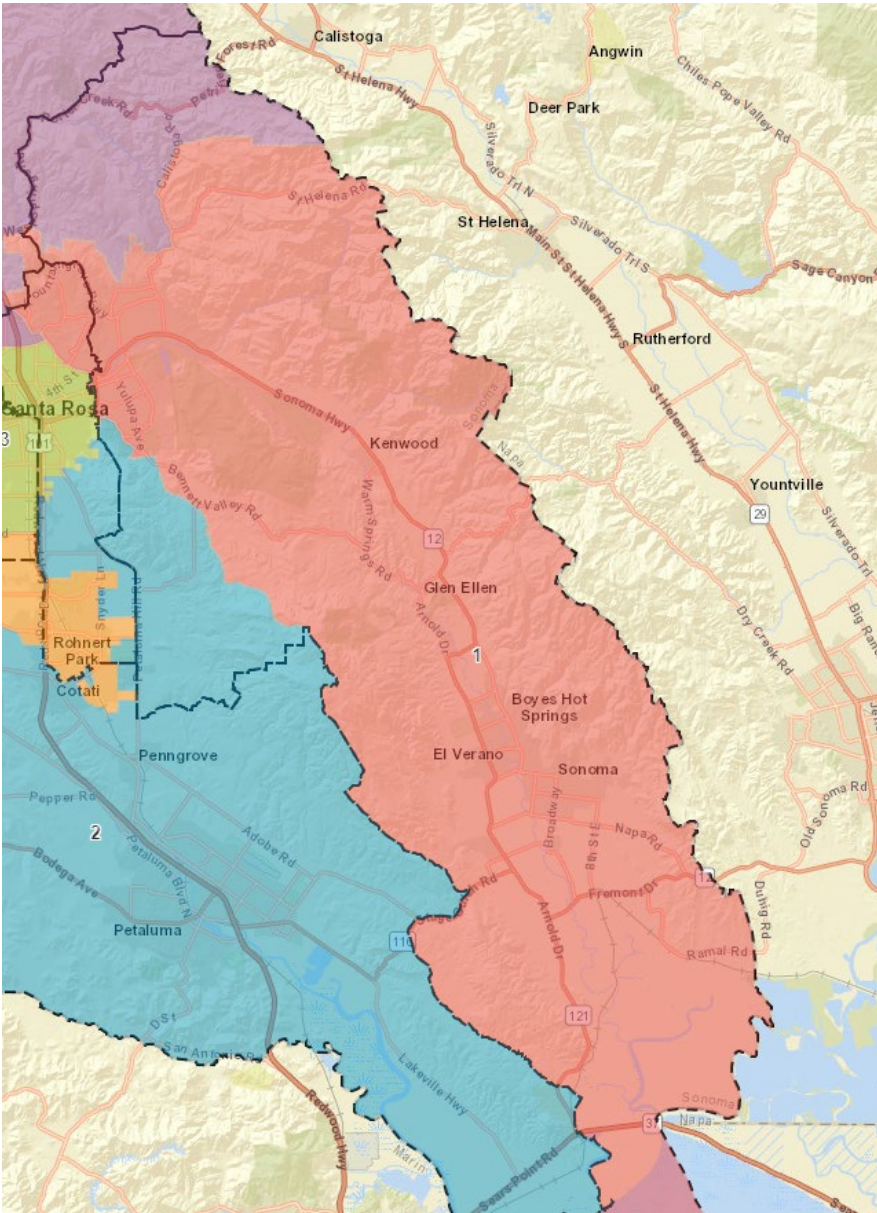
- Advisory Redistricting Commission (ARC)
 - 19 members
 - 8 meetings
 - Engagement ad hoc, Equity ad hoc (3 meetings per ad hoc)
 - Many hours of commissioner outreach and education to community

- Minimal change to boundaries is desirable
- The coast should remain unified within one district
- Rohnert Park should be unified within one district. It is preferable but not necessary for Rohnert Park and Cotati to be aligned within the same district.
- The Springs area (Eldridge-Fetters hot Springs Agua Caliente-Boyes Hot Springs) to remain unified
- Roseland and Moorland areas to be included in the district representing downtown Santa Rosa (currently D3)
- Coffey Park-Larkfield-Mark West-Wikiup should be unified and in the same district
- Russian River communities (Forestville-Guerneville-Monte Rio) should be unified within the same district
- Ideally seek to improve Sonoma Valley's voice and representation
- Align the area West of Hwy 101 west of Cotati with Petaluma as they share the same identity and legacy history.

ARC recommended draft map

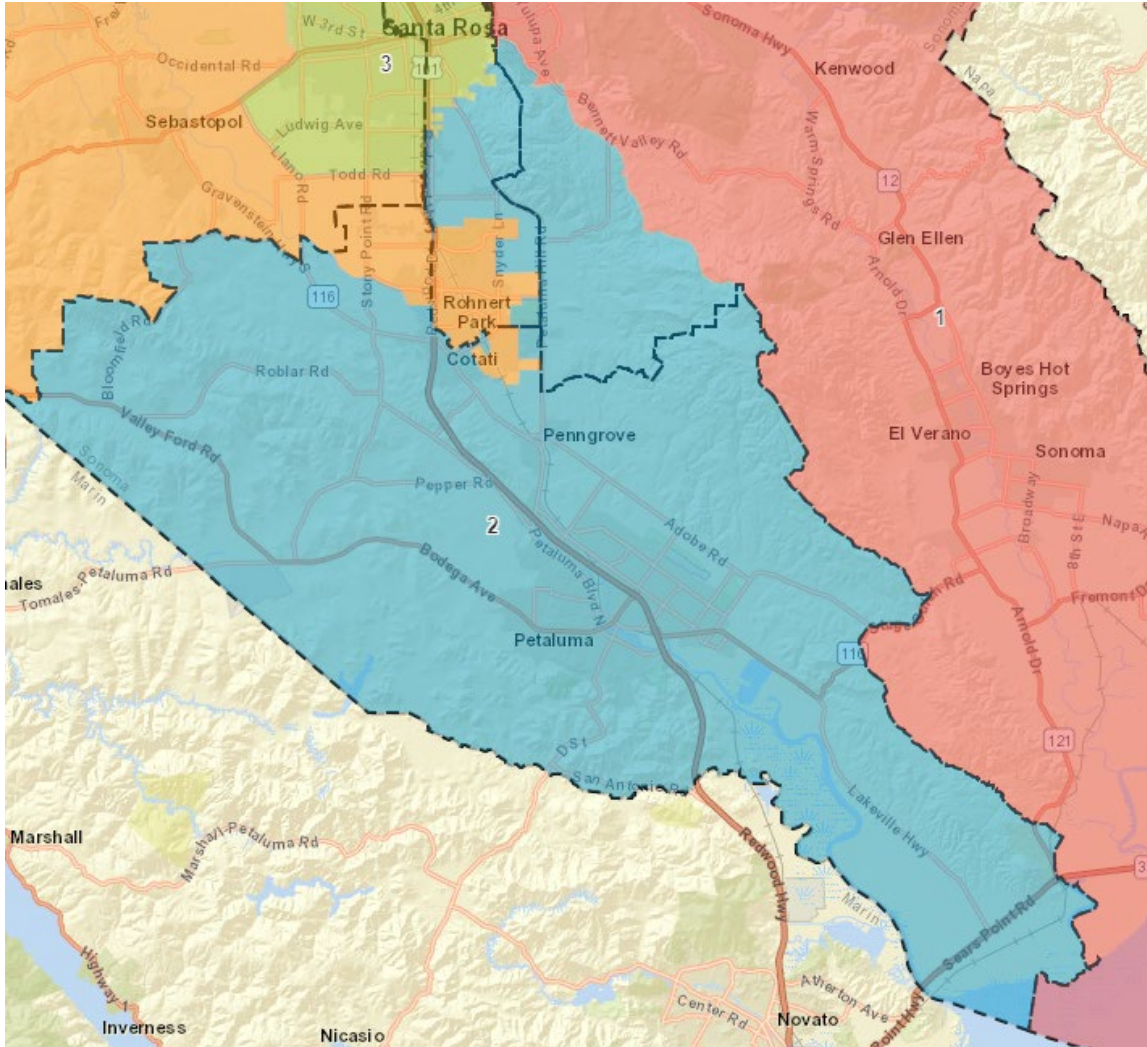


Dashed lines represent current districts



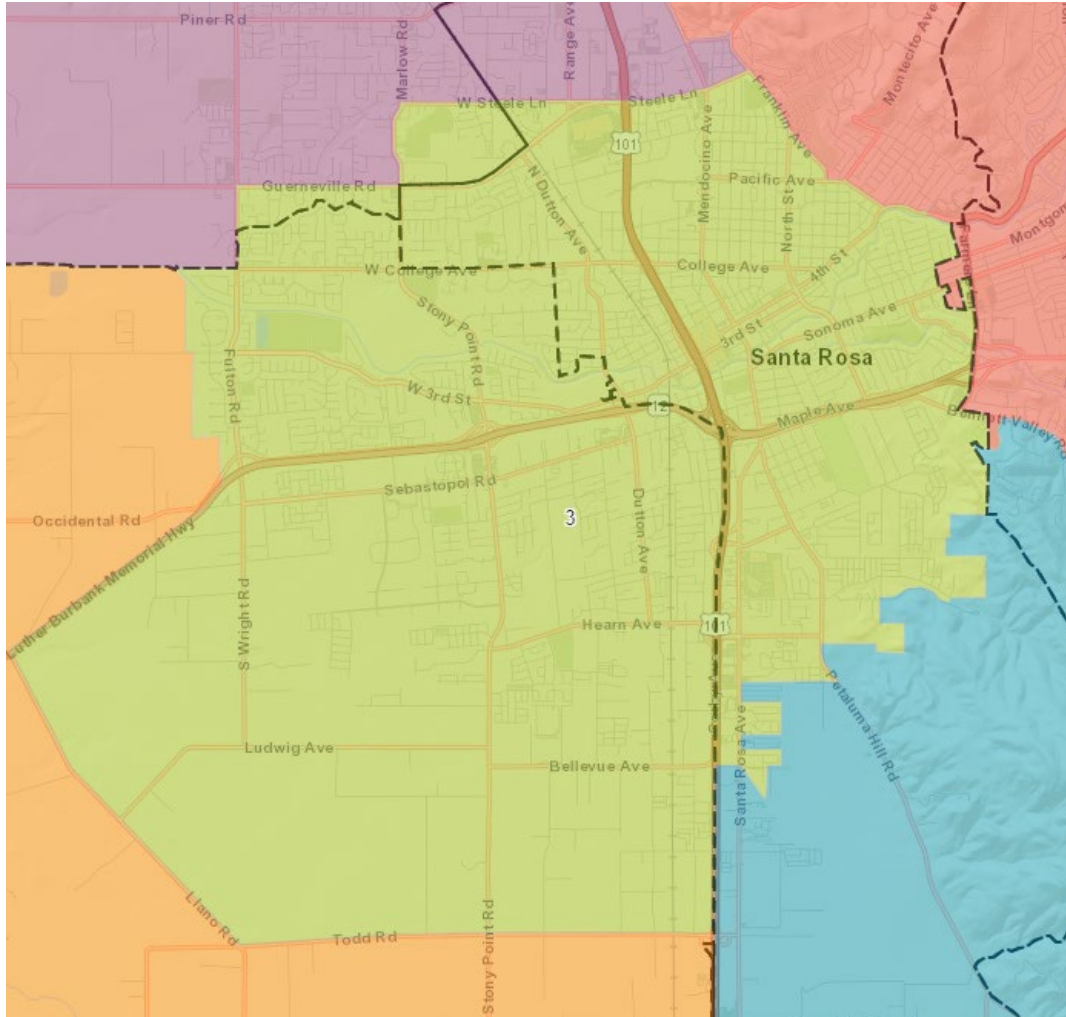
Relevant ARC Map Themes

- Minimal changes to boundaries
- Unify Springs area
- Seek to improve Sonoma Valley's voice and representation



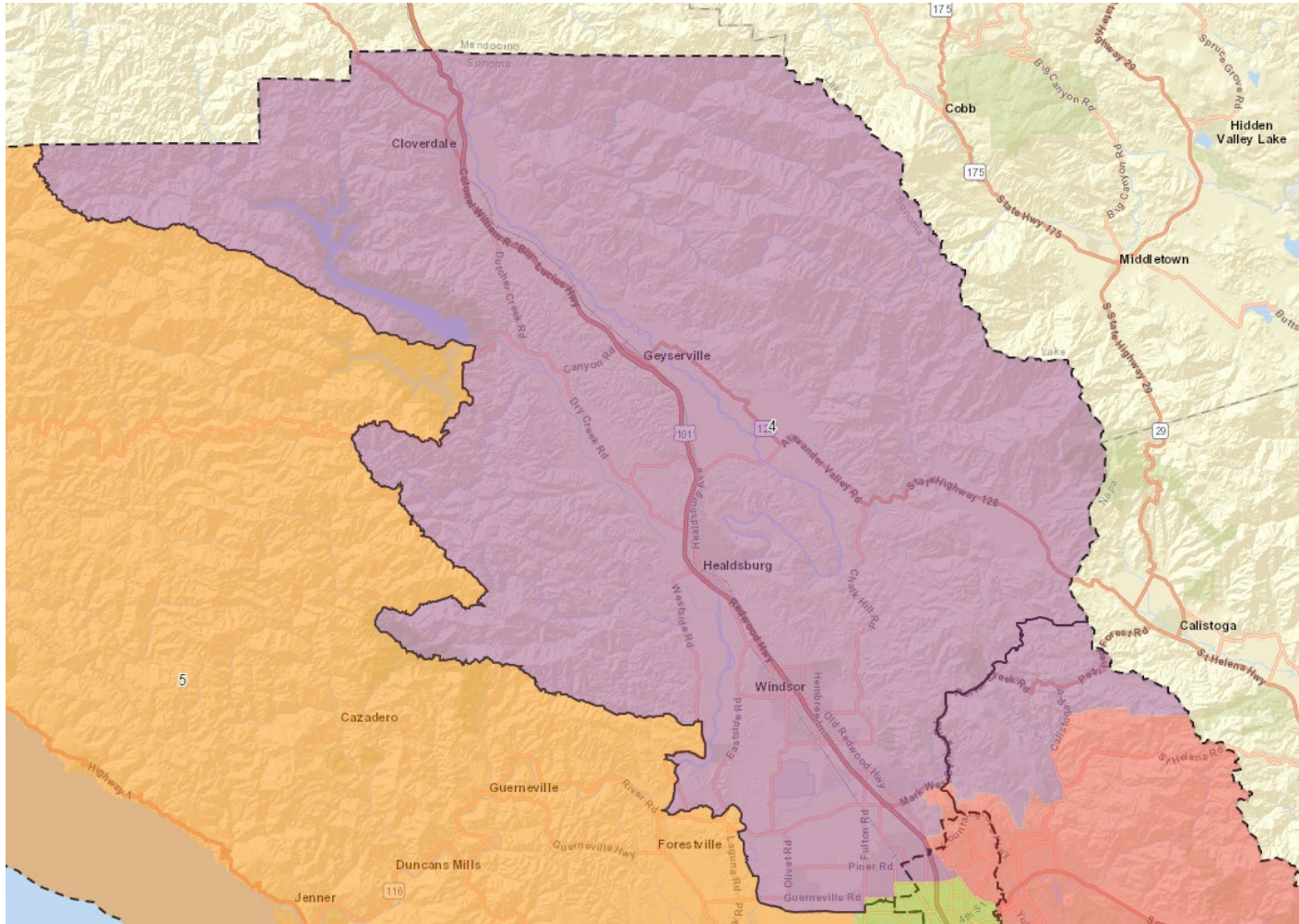
Relevant ARC Map Theme

- Align area west of Highway 101 west of Cotati with Petaluma



Relevant ARC Map Theme

- Roseland and Moorland areas to be included in district representing downtown Santa Rosa



Relevant ARC Map Themes

- Minimal changes to boundaries
- Coffey Park-Larkfield-Mark West-Wikiup should be unified and in the same district



Relevant ARC Map Themes

- Coast should remain unified within one district
- Rohnert Park should be in one district, and if possible, with Cotati in the same district.
- Russian river communities should be in the same district

Thank you

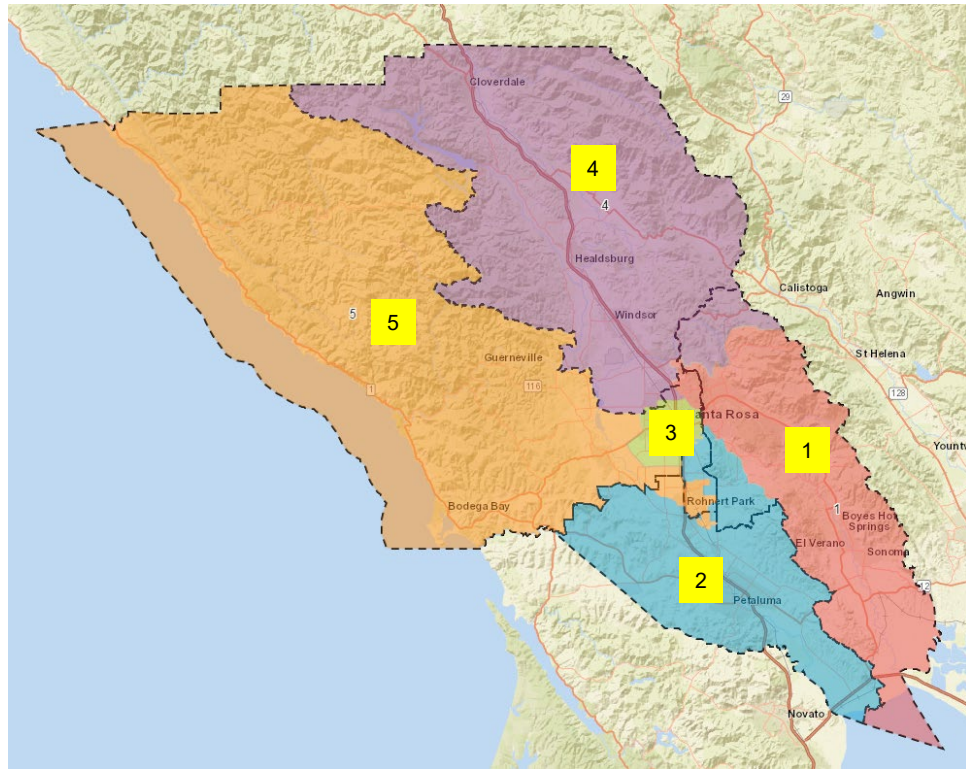
- Next public hearing on November 16, 2021
- Public comment can be submitted to redistricting2021@sonoma-county.org



sonomacounty.ca.gov/redistricting

Appendix: Demographics of recommended map

Unincorporated vs incorporated areas on recommended map



District	1	2	3	4	5	Total
Total Pop.	99,959	97,772	99,675	99,492	92,812	489,710
Cloverdale				9,011		9,011
Cotati		7,593				7,593
Healdsburg				11,360		11,360
Petaluma		59,847				59,847
Rohnert Park					44,464	44,464
Santa Rosa	57,638		93,430	27,430	15	178,513
Sebastopol					7,533	7,533
Sonoma	10,761					10,761
Windsor				26,378		26,378
Total Incorporated	68,399	67,440	93,430	74,179	52,012	355,460
Unincorporated	31,560	30,332	6,245	25,313	40,800	134,250
Pct. Unincorporated	32%	31%	6%	25%	44%	27%

The District 5 Santa Rosa population consists entirely of the non-contiguous pieces to the southwest of the city, bordering and around Sebastopol.

Demographic Summary of Recommended Map

District		1	2	3	4	5	Total
	Total population	99,959	97,772	99,675	99,492	92,812	489,710
	Deviation from ideal	2,017	-170	1,733	1,550	-5,130	7,147
	% Deviation	2.06%	-0.17%	1.77%	1.58%	-5.24%	7.30%
Total population	Hispanic	21%	23%	46%	33%	21%	29%
	NH White	68%	64%	39%	56%	66%	58%
	NH Black	1%	2%	3%	2%	2%	2%
	Asian-American	5%	7%	7%	5%	5%	6%
Citizen Voting Age Pop	Total	77,391	71,015	62,146	72,067	73,870	356,490
	Hispanic	11%	13%	26%	21%	13%	16%
	NH White	82%	80%	61%	71%	80%	75%
	NH Black	1%	1%	4%	1%	2%	2%
	Asian/Pac.Isl.	4%	5%	7%	4%	4%	5%

Demographic Summary of Recommended Map

District		1	2	3	4	5	Total
Voter Registration (Nov 2020)	Total	68,911	62,290	48,322	61,228	61,796	302,547
	Latino est.	10%	12%	27%	19%	12%	15%
	Spanish-Surnamed	9%	11%	25%	17%	11%	14%
	Asian-Surnamed	2%	2%	3%	2%	2%	2%
	Filipino-Surnamed	1%	1%	1%	1%	1%	1%
	NH White est.	86%	84%	67%	78%	84%	81%
	NH Black	1%	1%	3%	1%	1%	1%
Voter Turnout (Nov 2020)	Total	62,563	56,171	40,298	54,397	55,140	268,569
	Latino est.	9%	11%	25%	17%	11%	14%
	Spanish-Surnamed	8%	10%	23%	16%	10%	13%
	Asian-Surnamed	2%	2%	3%	2%	2%	2%
	Filipino-Surnamed	1%	1%	1%	1%	1%	1%
	NH White est.	87%	85%	69%	79%	85%	82%
	NH Black	1%	1%	3%	1%	1%	1%
Voter Turnout (Nov 2018)	Total	51,908	44,306	28,780	41,108	43,156	209,258
	Latino est.	7%	8%	19%	14%	8%	10%
	Spanish-Surnamed	6%	8%	18%	13%	8%	10%
	Asian-Surnamed	2%	2%	2%	2%	2%	2%
	Filipino-Surnamed	1%	1%	1%	1%	1%	1%
	NH White est.	89%	87%	75%	83%	88%	85%
	NH Black est.	1%	1%	3%	1%	1%	1%

Demographic Summary of Recommended Map

District		1	2	3	4	5	Total
ACS Population Estimate	Total	102,081	98,121	100,448	102,891	96,231	499,772
Age	age 0-19	19%	24%	25%	24%	20%	22%
	age 20-60	45%	51%	58%	51%	51%	51%
	age 60+	36%	25%	17%	25%	29%	26%
Immigration	immigrants	14%	15%	24%	16%	12%	16%
	naturalized	49%	45%	36%	45%	52%	44%
Language spoken at home	English	81%	78%	59%	72%	82%	74%
	Spanish	12%	16%	35%	24%	12%	20%
	Asian language	3%	2%	4%	2%	2%	3%
	Other language	4%	3%	3%	2%	3%	3%
Language Fluency	Speaks Eng. "Less than Very Well"	7%	9%	20%	13%	7%	11%
Education (among those age 25+)	High school	38%	44%	48%	45%	45%	44%
	Bachelor	27%	25%	15%	20%	23%	22%
	Graduate degree	19%	14%	8%	11%	14%	13%

Demographic Summary of Recommended Map

District		1	2	3	4	5	Total
Child in Household	child-under18	22%	30%	33%	31%	23%	28%
Pct of Pop. Age 16+	employed	59%	66%	71%	66%	64%	65%
Household Income	income 0-25k	12%	11%	15%	12%	15%	13%
	income 25-50k	15%	15%	20%	16%	18%	17%
	income 50-75k	16%	15%	21%	15%	17%	17%
	income 75-200k *	43%	45%	41%	46%	40%	43%
	income 200k-plus	15%	13%	4%	12%	10%	11%
Housing Stats	single family	83%	84%	69%	82%	81%	80%
	multi-family	17%	16%	31%	18%	19%	20%
	rented	34%	35%	53%	35%	38%	39%
	owned	66%	65%	47%	65%	62%	61%

* No additional break-out of data from this range is available

- Total population data from the 2020 Decennial Census.
- Surname-based Voter Registration and Turnout data from the California Statewide Database.
- Latino voter registration and turnout data are Spanish-surname counts adjusted using Census Population Department undercount estimates.
- NH White and NH Black registration and turnout counts estimated by NDC. Citizen Voting Age Population, Age, Immigration, and other demographics from the 2015-2019 American Community Survey and Special Tabulation 5-year data.