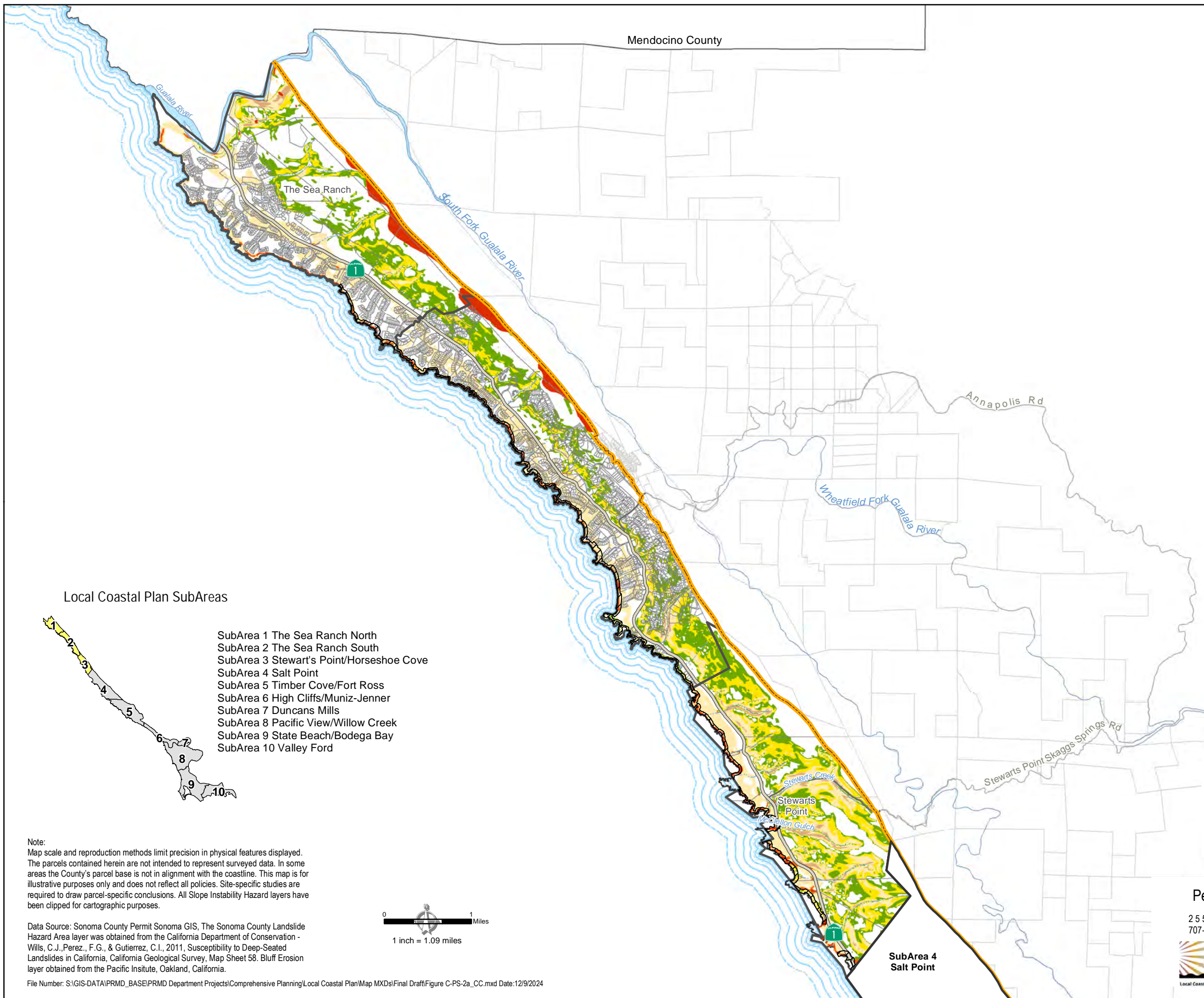


Sonoma County Local Coastal Plan Slope Instability Hazards



Landslide Susceptibility
[increase susceptibility: 0 → X]

ROCK STRENGTH

1 2 3

SLOPE CLASS	ROCK STRENGTH		
	1	2	3
1	0	0	0
2	0	V	VII
3	0	V	VII
4	III	VIII	IX
5	VI	IX	X
6	VII	IX	X
7	VIII	IX	X
8	VIII	IX	X

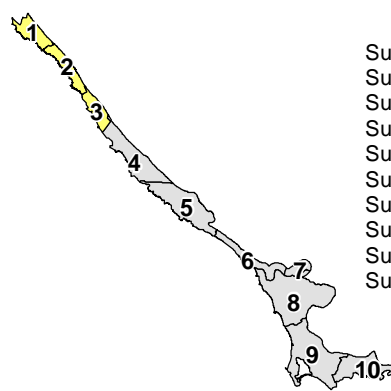
High Risk Future Bluff Erosion

Base Map Layers

SUBAREA

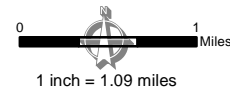
- Salt Point
- Parcel
- Coastal Zone Boundary
- Natural Coastline
- Highway
- Road
- Perennial Stream
- Intermittent Stream

Local Coastal Plan SubAreas



- SubArea 1 The Sea Ranch North
- SubArea 2 The Sea Ranch South
- SubArea 3 Stewart's Point/Horseshoe Cove
- SubArea 4 Salt Point
- SubArea 5 Timber Cove/Fort Ross
- SubArea 6 High Cliffs/Muniz-Jenner
- SubArea 7 Duncans Mills
- SubArea 8 Pacific View/Willow Creek
- SubArea 9 State Beach/Bodega Bay
- SubArea 10 Valley Ford

Note:
Map scale and reproduction methods limit precision in physical features displayed. The parcels contained herein are not intended to represent surveyed data. In some areas the County's parcel base is not in alignment with the coastline. This map is for illustrative purposes only and does not reflect all policies. Site-specific studies are required to draw parcel-specific conclusions. All Slope Instability Hazard layers have been clipped for cartographic purposes.



Data Source: Sonoma County Permit Sonoma GIS, The Sonoma County Landslide Hazard Area layer was obtained from the California Department of Conservation - Wills, C.J., Perez., F.G., & Gutierrez, C.I., 2011, Susceptibility to Deep-Seated Landslides in California, California Geological Survey, Map Sheet 58. Bluff Erosion layer obtained from the Pacific Institute, Oakland, California.

File Number: S:\GIS-DATA\PRMD_BASE\PRMD Department Projects\Comprehensive Planning\Local Coastal Plan\Map MXDs\Final Draft\Figure C-PS-2a_CC.mxd Date:12/9/2024

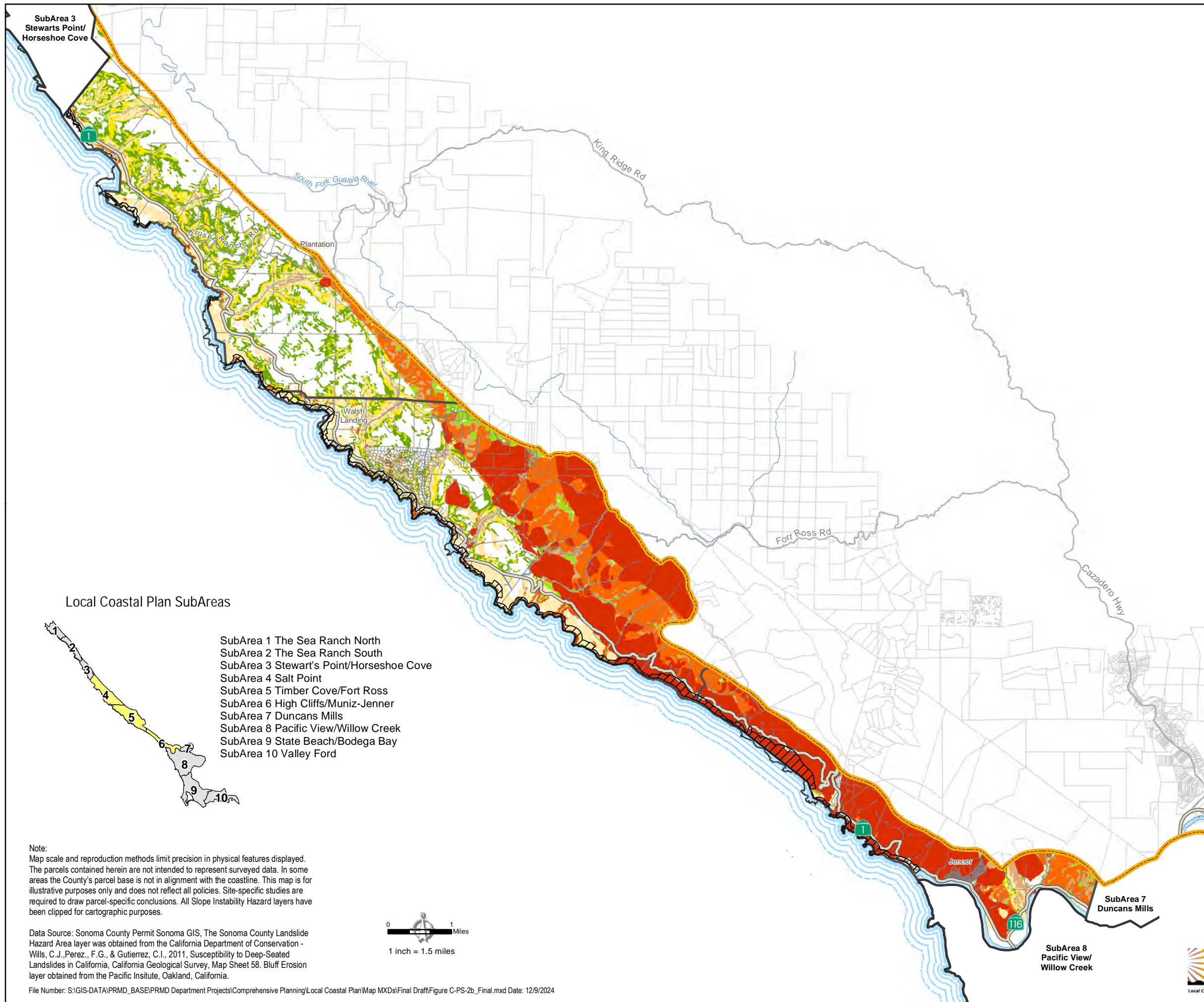
**FIGURE C-PS-2a
Slope Instability Hazards
SubAreas 1 - 3**

Permit and Resource Management Department

2550 Ventura Avenue, Santa Rosa, California 95403
707-565-1900 FAX 707-565-1103



Sonoma County Local Coastal Plan Slope Instability Hazards



Landslide Susceptibility
[increase susceptibility: 0 → X]

ROCK STRENGTH

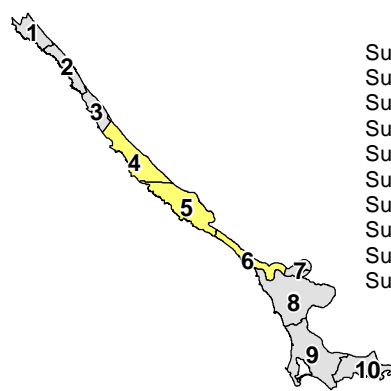
		1	2	3
SLOPE CLASS	1	0	0	0
	2	0	V	VII
	3	0	V	VII
	4	III	VIII	IX
	5	VI	IX	X
	6	VII	IX	X
	7	VIII	IX	X
	8	VIII	IX	X

High Risk Future Bluff Erosion

Base Map Layers

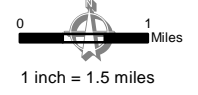
- Coastal SubArea
- Parcel
- Coastal Zone Boundary
- Natural Coastline
- Highway
- Road
- Perennial Stream
- Intermittent Stream

Local Coastal Plan SubAreas



- SubArea 1 The Sea Ranch North
- SubArea 2 The Sea Ranch South
- SubArea 3 Stewart's Point/Horseshoe Cove
- SubArea 4 Salt Point
- SubArea 5 Timber Cove/Fort Ross
- SubArea 6 High Cliffs/Muniz-Jenner
- SubArea 7 Duncans Mills
- SubArea 8 Pacific View/Willow Creek
- SubArea 9 State Beach/Bodega Bay
- SubArea 10 Valley Ford

Note:
Map scale and reproduction methods limit precision in physical features displayed. The parcels contained herein are not intended to represent surveyed data. In some areas the County's parcel base is not in alignment with the coastline. This map is for illustrative purposes only and does not reflect all policies. Site-specific studies are required to draw parcel-specific conclusions. All Slope Instability Hazard layers have been clipped for cartographic purposes.



Data Source: Sonoma County Permit Sonoma GIS, The Sonoma County Landslide Hazard Area layer was obtained from the California Department of Conservation - Wills, C.J., Perez., F.G., & Gutierrez, C.I., 2011, Susceptibility to Deep-Seated Landslides in California, California Geological Survey, Map Sheet 58. Bluff Erosion layer obtained from the Pacific Institute, Oakland, California.

File Number: S:\GIS-DATA\PRMD_BASE\PRMD Department Projects\Comprehensive Planning\Local Coastal Plan\Map MXDs\Final Draft\Figure C-PS-2b_Final.mxd Date: 12/9/2024

**FIGURE C-PS-2b
Slope Instability Hazards
SubAreas 4 - 6**

Permit and Resource Management Department
2550 Ventura Avenue, Santa Rosa, California 95403
707-565-1900 FAX 707-565-1103

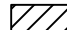


Sonoma County Local Coastal Plan Slope Instability Hazards








Landslide Susceptibility
[increase susceptibility: 0 → X]

ROCK STRENGTH

SLOPE CLASS	ROCK STRENGTH		
	1	2	3
1	0	0	0
2	0	V	VII
3	0	V	VII
4	III	VIII	IX
5	VI	IX	X
6	VII	IX	X
7	VIII	IX	X
8	VIII	IX	X

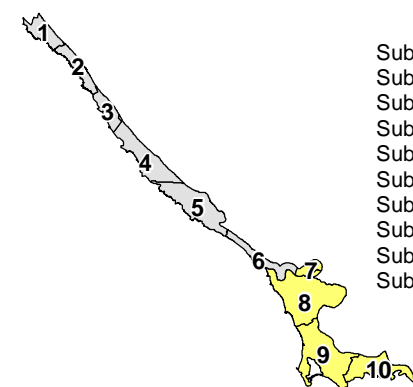
High Risk Future Bluff Erosion 

Base Map Layers

- Coastal SubArea 
- Parcel 
- Coastal Zone Boundary 
- Highway 
- Road 
- Perennial Stream 
- Intermittent Stream 

**FIGURE C-PS-2c
Slope Instability Hazards
SubAreas 7 - 10**

Local Coastal Plan SubAreas

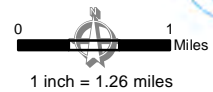


- SubArea 1 The Sea Ranch North
- SubArea 2 The Sea Ranch South
- SubArea 3 Stewart's Point/Horseshoe Cove
- SubArea 4 Salt Point
- SubArea 5 Timber Cove/Fort Ross
- SubArea 6 High Cliffs/Muniz-Jenner
- SubArea 7 Duncans Mills
- SubArea 8 Pacific View/Willow Creek
- SubArea 9 State Beach/Bodega Bay
- SubArea 10 Valley Ford

Note:
Map scale and reproduction methods limit precision in physical features displayed. The parcels contained herein are not intended to represent surveyed data. In some areas the County's parcel base is not in alignment with the coastline. This map is for illustrative purposes only and does not reflect all policies. Site-specific studies are required to draw parcel-specific conclusions. All Slope Instability Hazard layers have been clipped for cartographic purposes.

Data Source: Sonoma County Permit Sonoma GIS, The Sonoma County Landslide Hazard Area layer was obtained from the California Department of Conservation - Wills, C.J., Perez., F.G., & Gutierrez, C.I., 2011, Susceptibility to Deep-Seated Landslides in California, California Geological Survey, Map Sheet 58. Bluff Erosion layer obtained from the Pacific Institute, Oakland, California.

File Number: S:\GIS-DATA\PRMD_BASE\PRMD Department Projects\Comprehensive Planning\Local Coastal Plan\Map MXDs\Final Draft\Figure C-PS-2c_Final.mxd Date: 12/9/2024



Marin County

Permit and Resource Management Department

2550 Ventura Avenue, Santa Rosa, California 95403
707-565-1900 FAX 707-565-1103

