

1. ANTENNAS NOT SHOWN FOR CLARITY.
 2. FIBER AND POWER ROUTES SHOWN ARE PRELIMINARY AND TO BE VERIFIED BY COORDINATION WITH THE UTILITY COMPANY PRIOR TO CONSTRUCTION.



1903 WRIGHT PLACE, SUITE 140
 CARLSBAD, CA 92008



5001 EXECUTIVE PARKWAY
 SAN RAMON, CA 94583



TOWER ENGINEERING PROFESSIONALS
 4710 E ELWOOD ST, STE 9
 PHOENIX, AZ 85040
 OFFICE: (480) 285-0036
 www.tepgroup.net

FIRSTNET/AT&T SITE ID:
CCL06383

PSTC #: CANC-HEALD01
SONOMA WATER DISTRICT


10290 WESTSIDE RD
HEALDSBURG, CA 95448
(SONOMA COUNTY)

PROPOSED 115'-0"
MONOPINE TOWER

ISSUED FOR:

| REV | DATE | DRWN | DESCRIPTION | QA |
|-----|----------|------|-------------|-----|
| A | 09-26-22 | KRS | ZONING | HMM |
| B | 10-07-22 | SSO | ZONING | HMM |
| C | 10-28-22 | CAM | ZONING | HMM |

SEAL:

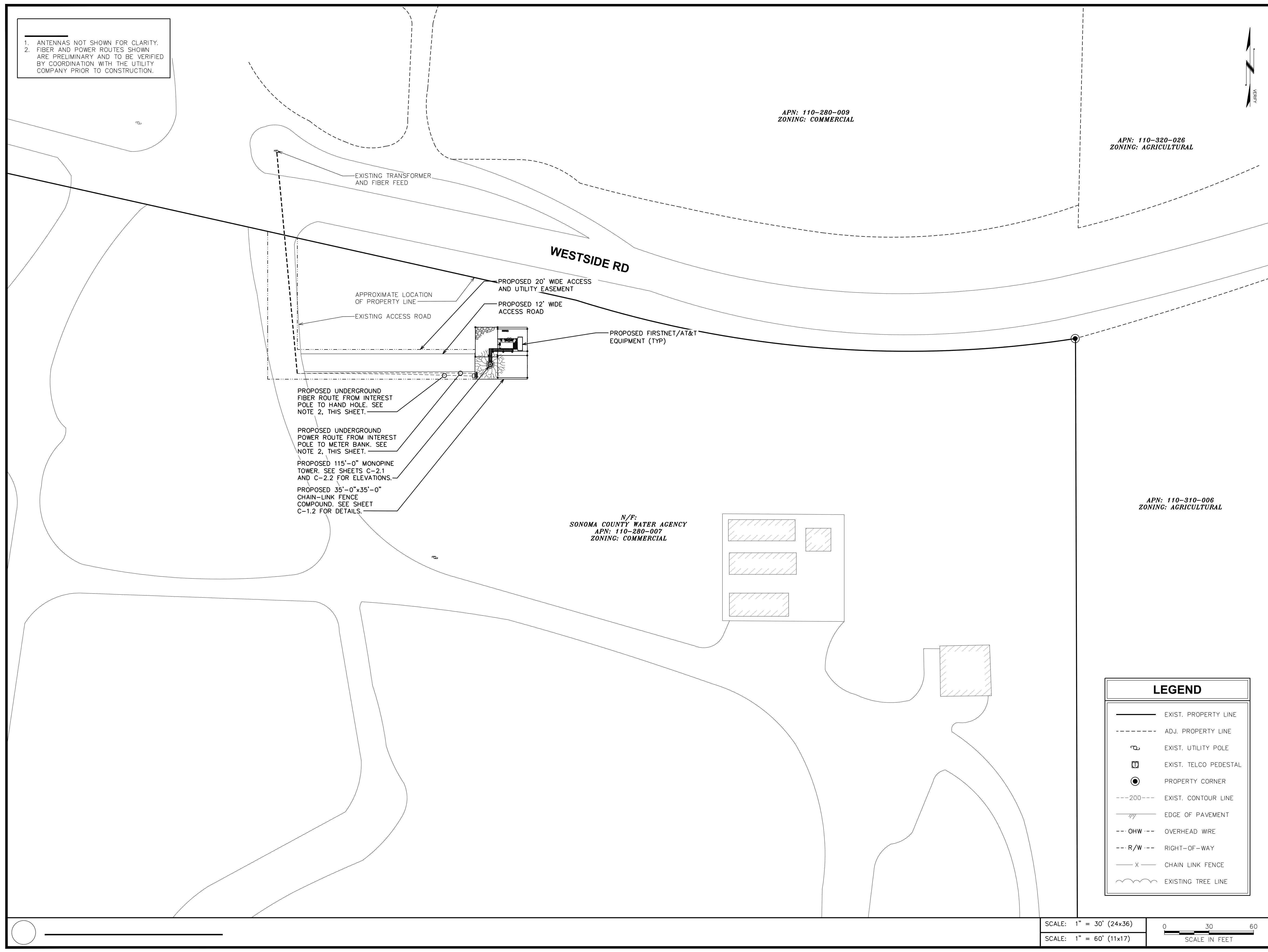


IT IS A VIOLATION OF LAW FOR ANY PERSON, UNLESS THEY ARE ACTING UNDER THE DIRECTION OF A LICENSED PROFESSIONAL ENGINEER, TO ALTER THIS DOCUMENT.

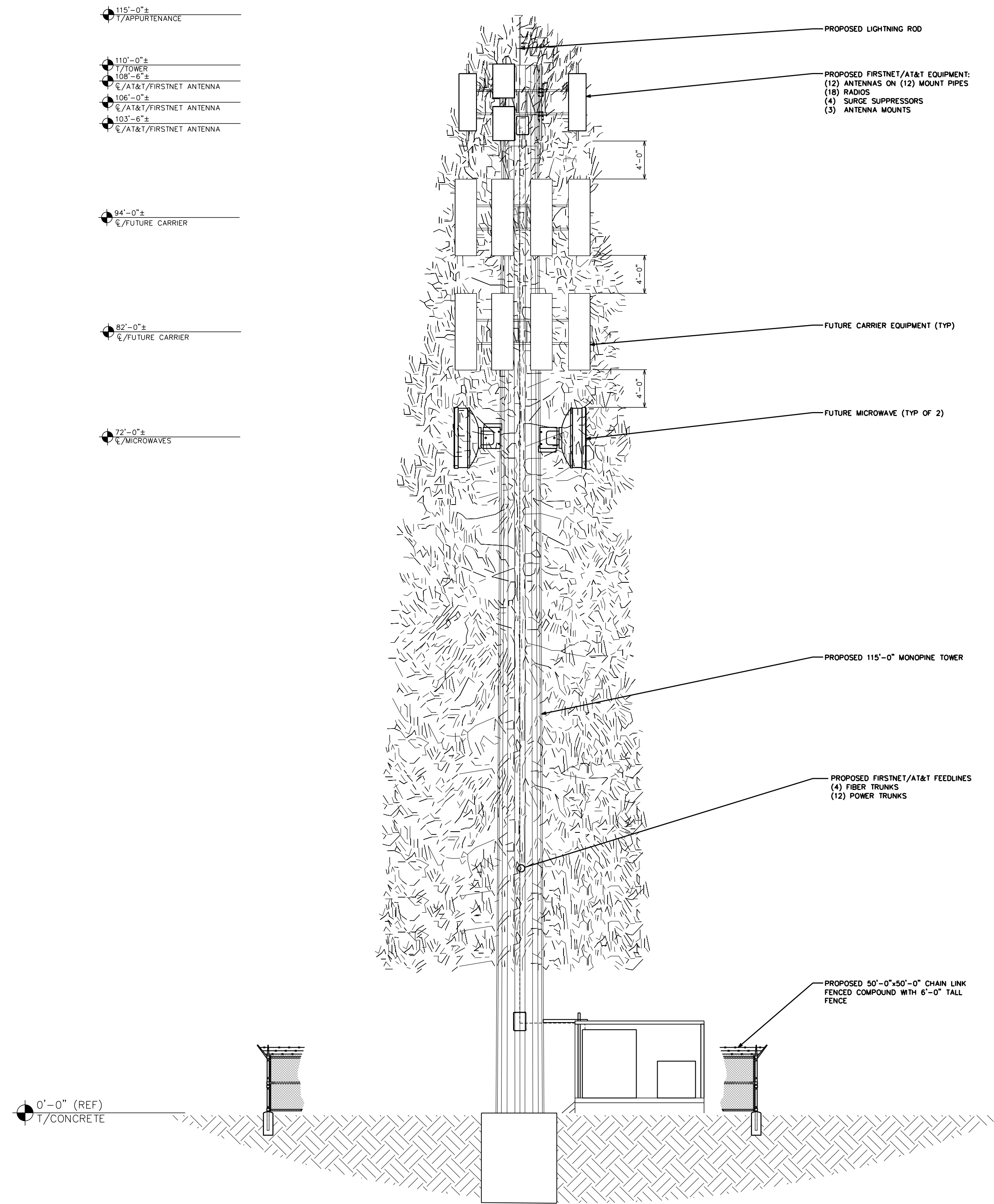
SHEET TITLE:
SITE PLAN

SHEET NUMBER: **C-1.1** **REVISION:** **C**

TEP #: 314196.336180



1. PROPOSED CABLES TO BE ROUTED PER SPECIFICATIONS OF PASSING STRUCTURAL ANALYSIS.
2. TOWER ELEVATION IS FOR SCHEMATIC PURPOSES ONLY. TEP DID NOT CONFIRM EXISTING SITE CONDITIONS INCLUDING, BUT NOT LIMITED TO ANTENNA HEIGHTS, ANTENNA AZIMUTHS, AND MOUNT CONFIGURATIONS.
3. CONTRACTOR TO VERIFY PROPOSED LOADING WITH PASSING STRUCTURAL ANALYSIS PRIOR TO CONSTRUCTION. CONTRACTOR TO CONTACT FIRSTNET/AT&T OR PSTC IMMEDIATELY IN THE EVENT OF ANY DISCREPANCIES.



1903 WRIGHT PLACE, SUITE 140
CARLSBAD, CA 92008

5001 EXECUTIVE PARKWAY
SAN RAMON, CA 94583

TOWER ENGINEERING PROFESSIONALS
4710 E. ELWOOD ST., STE 9
PHOENIX, AZ 85040
OFFICE: (480) 285-0036
www.tepgroup.net

FIRSTNET/AT&T SITE ID:
CCL06383

PSTC #: CANC-HEALD01
SONOMA WATER DISTRICT

10290 WESTSIDE RD
HEALDSBURG, CA 95448
(SONOMA COUNTY)

PROPOSED 115'-0"
MONOPINE TOWER

ISSUED FOR:

| REV | DATE | DRWN | DESCRIPTION | QA |
|-----|----------|------|-------------|-----|
| A | 09-26-22 | KRS | ZONING | HMM |
| B | 10-07-22 | SSO | ZONING | HMM |
| C | 10-28-22 | CAM | ZONING | HMM |

SEAL:

IT IS A VIOLATION OF LAW FOR ANY PERSON, UNLESS THEY ARE ACTING UNDER THE DIRECTION OF A LICENSED PROFESSIONAL ENGINEER, TO ALTER THIS DOCUMENT.

SHEET TITLE:
FINAL ELEVATION

SHEET NUMBER: C-2.1
REVISION: C

TEP #: 314196.336180

SCALE: 1/8" = 1'-0" (24x36)
SCALE: 1/16" = 1'-0" (11x17)

SCALE IN FEET