

- |  |  |   |   |
|--|--|---|---|
|   | Petaluma Groundwater Basin, Source: California Department of Water Resources, Bulletin 118                                     |  | PRMD Land Use (General Plan 2030, Land Use Element)   |
|  | Sonoma Valley Groundwater Basin, Source: California Department of Water Resources, Bulletin 118                                |  | Agriculture (Open Space Agriculture, Land Intensive Agriculture)  |
|  | Petaluma Watershed, Source: The California Interagency Watershed Map of 1999 (Calwater 2.2, updated May 2004, "calw/221")      |  | Resources & Rural Development/Rural Residential   |
|  | Sonoma Valley Watershed, Source: The California Interagency Watershed Map of 1999 (Calwater 2.2, updated May 2004, "calw/221") |  | Urban Residential   |
|  | Service Area of North Bay County Water District, Source: Sonoma County ISD   |  | Recreation/Visitor Serving Commercial   |
|  | Service Area for The City of Petaluma, Source: Per The City of Petaluma Records  |  | Public/Quasi Public   |
|  | Service Area for The City of Sonoma, Source: Per The City of Sonoma Records  |  | Commercial/Industrial (General Commercial, Limited Commercial, Limited Commercial/Traffic Sensitive, General Industrial and Limited Industrial) |
|  | Service Area for The Valley of the Moon Water District, Source: Per The Valley of the Moon Water District Records              |   |   |

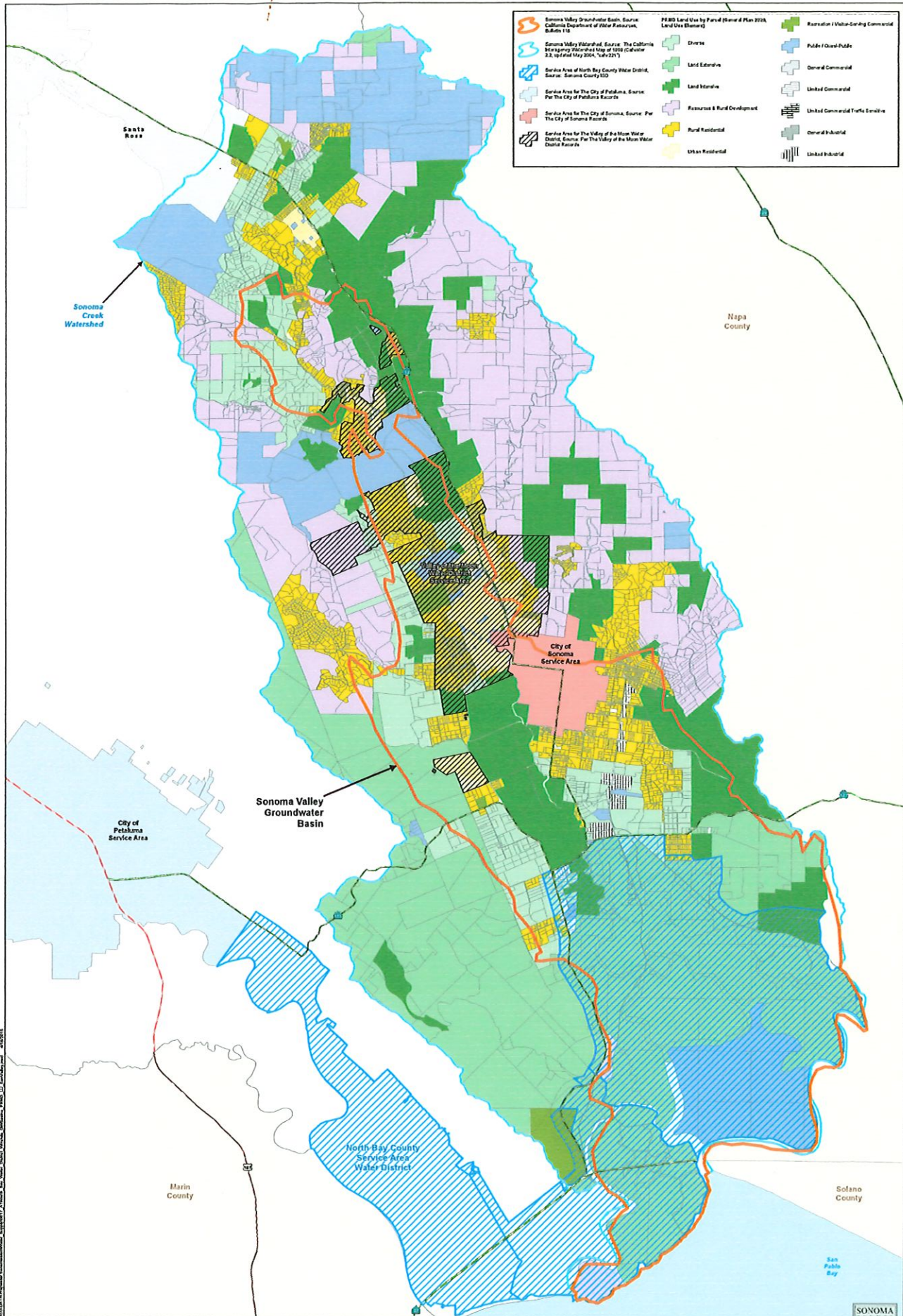
**North Bay Water District Map**  
 Sonoma and Petaluma Watersheds, Groundwater Basins,  
 Service Areas and Land Use

**DISCLAIMER**  
 This map document and associated data are distributed for informational purposes only. "AS-IS" as published and provided without warranty of any kind expressed or implied. The positional accuracy of the data is approximate and not intended to represent survey map accuracy. The Sonoma County Water Agency assumes no responsibility arising from use of the information.



03/20/2018 10:00 AM Sonoma County Water Agency GIS Department

Sonoma Valley Groundwater Basin, Source: California Department of Water Resources, Bulletin 116	FIRM Land Use by Parcel (State of Plan 2020, Land Use Element)	Restoration / Water-Saving Commercial
Sonoma Valley Watershed, Source: The California State Agency Watershed Use of 1979 (California 2.5, updated May 2004, Vol. 2(2))	Diverse	Public / Quasi-Public
Service Area of North Bay County Water District, Source: Sonoma County GIS	Land Extensive	General Commercial
Service Area for The City of Petaluma, Source: For The City of Petaluma Records	Land Intensive	Limited Commercial
Service Area for The City of Sonoma, Source: For The City of Sonoma Records	Resource & Rural Development	Limited Commercial Traffic Sensitive
Service Area for The Valley of the Moon Water District, Source: For The Valley of the Moon Water District Records	Rural Residential	General Industrial
	Urban Residential	Limited Industrial



**North Bay Water District Map**  
 Sonoma and Petaluma Watersheds, Groundwater Basins,  
 Service Areas and Land Use

**DISCLAIMER**  
 This map document and associated data are distributed for informational purposes only. SONOMA WATER is not responsible for any errors or omissions in this map document or for any loss or damage resulting from its use. The Sonoma County Water Agency assumes no responsibility arising from use of the information.