

Climate Action and Resiliency Division

County of Sonoma, County Administrator's Office

Climate Action, Resiliency and Equity (CARE) Framework Overview



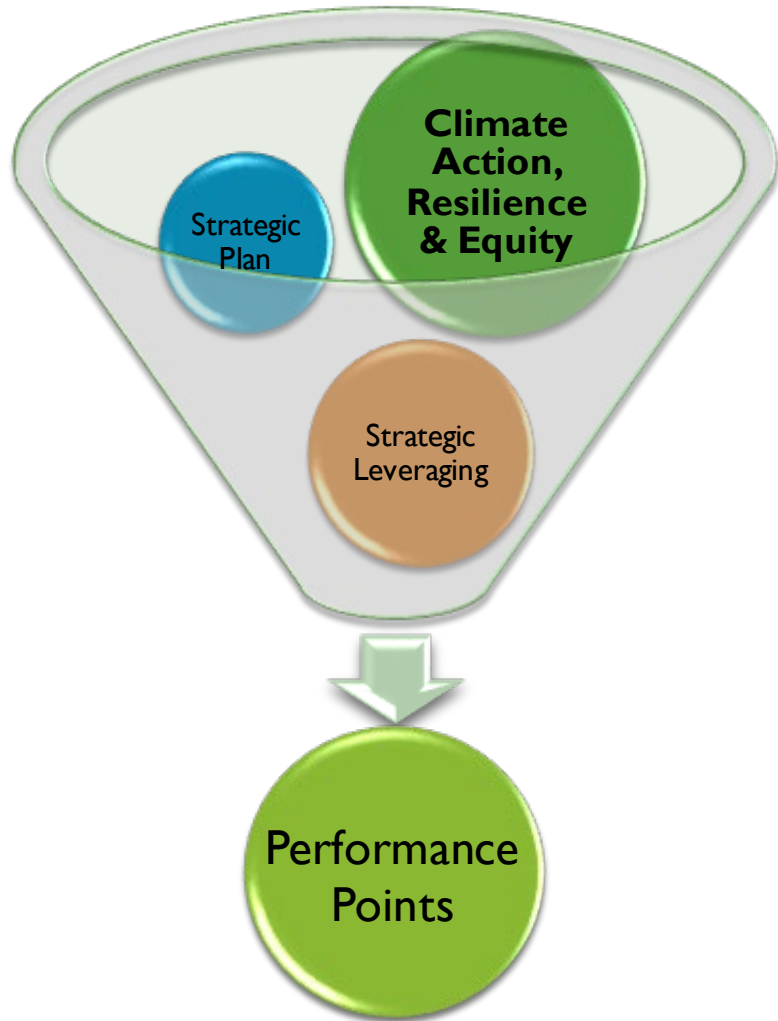
FRAMEWORK EVOLUTION

- **Grounded in Board policy and will evolve**
- **Current framework**
 - Prioritize Round #1 of Climate & Resiliency Fund (CRF) Projects
 - Guide Round #2 of CRF Projects
- **Future refinement and updates**
 - Base on broad collaboration & further enhance evaluations
 - Update according to Federal and State priority development

WHAT DOES THE FRAMEWORK DO?

- **Evaluates projects based on:**
 - Advancing Climate Action, Resilience & Equity (CARE)
 - Promoting strategic alignment and leveraging
 - How much County funding is needed for the project
- **Establishes specific criteria for performance:**
 - How significant is the activity area?
 - How well does the project address it?
- **Ranks projects by:**
 - Performance criteria for each policy objective
 - Different measures of Cost & Cost Effectiveness

OVERVIEW OF THE FRAMEWORK PROCESS



POLICY ELEMENTS OF PROJECT PERFORMANCE

Climate
Action,
Resilience &
Equity

- Greenhouse Gas Mitigation
- Building Climate Resiliency
- Alignment with Climate Action & Resiliency Pillar
- Support from other Climate-related Plans, Tools, or Models
- Promoting Climate Equity

Strategic
Plan

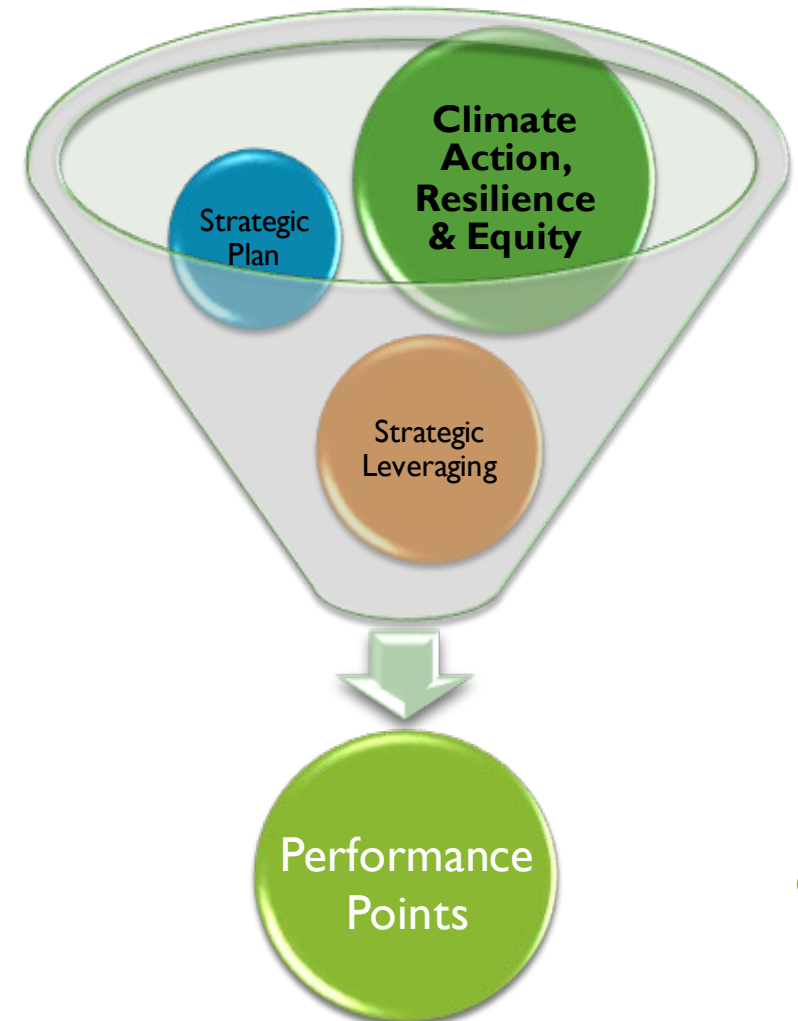
- Support for Goals & Objectives in other Strategic Plan Pillars

Strategic
Leveraging

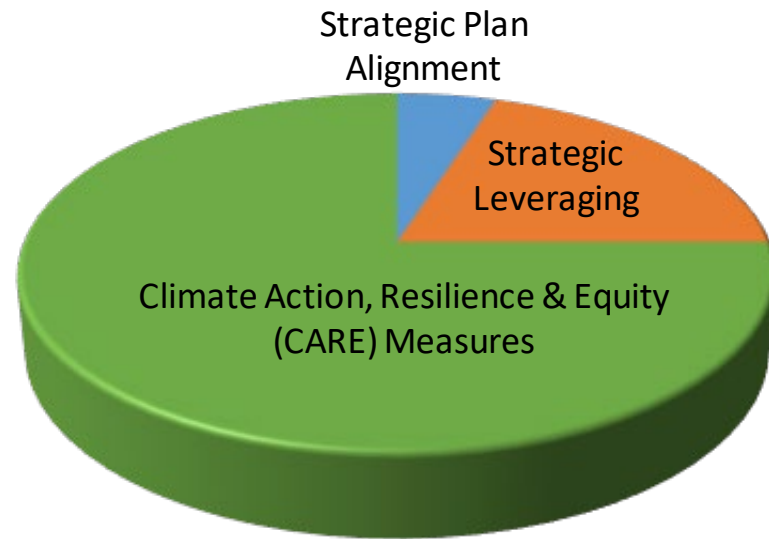
- Committed Cost Sharing
- Opportunity: Gateway Project for Future Projects, Expected Return on Investment, or Leveraging Partnerships
- Alignment with State or Federal Grant Criteria

PROJECT PERFORMANCE SCALES

- Performance criteria for each policy element
 - **Quantitative** assessment of CO2e, costs, etc.
 - **Qualitative** scales for assessing performance, eg:



SCORING PROJECT PERFORMANCE ELEMENTS



CARE Measures	Mitigation	40	75
	Resilience		
	CAR Pillar Alignment	10	
	Plans, Tools, & Models	10	
	Climate Equity	15	
Strategic Plan Alignment		5	5
Strategic Leveraging	Committed Cost Sharing	10	20
	Opportunity	5	
	State & Federal Alignment	5	
		Total =	100 pts

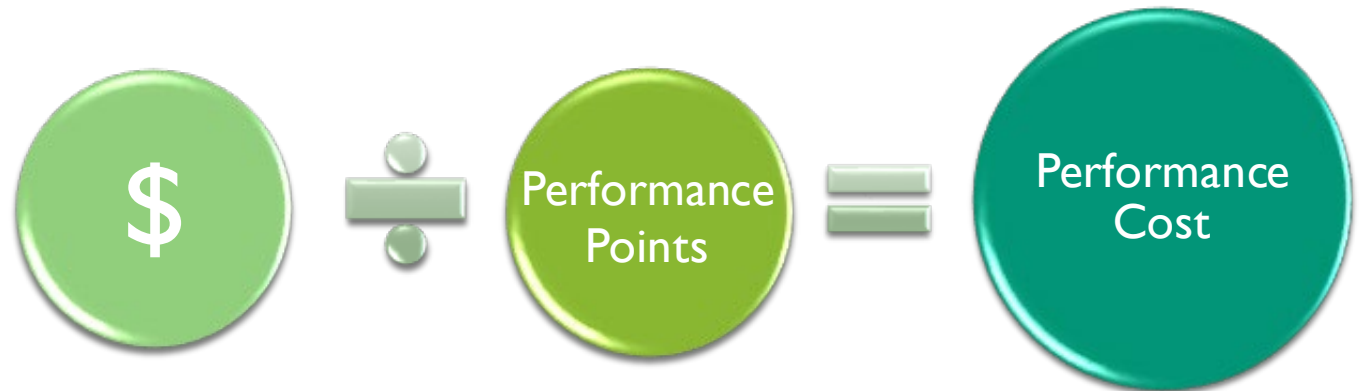
EVALUATING COSTS & EFFECTIVENESS

- Cost Evaluation

- Total project cost
- County project cost

- Performance Cost

- County cost for performance points
- Projects with non-County funds are more cost effective



TAKING A CLOSER LOOK AT THE POLICY ELEMENTS

■ CARE

- GHG Mitigation
- Building Resilience
- CAR Pillar Alignment
- Plans, Models & Tools
- Climate Equity

■ Strategic Plan

■ Strategic Leveraging

- Cost Sharing
- Gateway Projects, ROI and Partnership
- State & Federal Grant Alignment





Mitigation Score

(Maximum of 40 points)

- **Quantity** of CO₂e Reductions: Calculated direct, indirect, and total GHG reductions as CO₂e **(25 pts)**
- **Quality** of CO₂e Reductions: Assessment of timeliness, certainty/verifiability, and permanence of reductions **(10 pts)**
- **Co-benefits** **(5 pts)**



Improved air quality. Criteria pollutant reductions.



Energy and fuel savings. Electricity, natural gas, refrigerant, propane, gasoline, or diesel reductions.



VMT reductions. Reductions in vehicle miles traveled.



Water conservation. Water use reductions.



Enhanced pedestrian or traffic safety. Reduced collisions; pedestrian/bicyclist safety.



Improved public health. Toxic air contaminant reductions (including exposure); increased physical activity; improved public safety.



Improved ecosystem health. Improved biological diversity and soil and water quality.



Enhanced energy security. Systemwide load reduction; local energy generation, levelling out peaks.



Enhanced food security. Stability of food systems; improved household access to food.



Social equity. Address existing social inequities (e.g., housing/anti-displacement, community engagement, availability of disposable income).



Building Resilience Decreases Vulnerability to Climate Hazards

- How vulnerable is the target asset or system to climate hazards?
- How much will the project decrease the vulnerability of the target asset or system?
- How well does the project identify & exploit climate opportunities?

Target asset or system = *The physical location of the or the specific asset/system within that area*



CLOSER
LOOK



CARE: RESILIENCE ELEMENT

Resilience Score

(Maximum of 40 points)

Vulnerability
Score



Improvement
Score



Resilience
Score



Vulnerability to Climate Hazards

□ The degree to which natural, built, and human systems are susceptible to climate harm □

■ **Climate Hazards:**

- Exposure = *the extent to which a community/asset/system is likely to experience a climate hazard*
- Sensitivity = *the extent to which a community/asset/system would be affected by exposure to a climate hazard*

■ **Potential Impact** = *the expected harm from a climate hazard base on exposure & sensitivity*

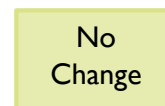
■ **Adaptive Capacity** = *the ability of a community, place, or system to change characteristics or behavior to lessen potential impact*

		Vulnerability Score Matrix				
Potential Impacts	Extreme	5	5	4	3	2
	Severe	5	4	3	2	1
	Significant	4	3	2	2	1
	Moderate	3	2	2	1	1
	Low	2	1	1	1	1
Adaptive Capacity Classification		Low	Low-Med	Med	Med-High	High



How the Project Changes Vulnerability

- **Improvements:** Decrease potential impact or increase adaptive capacity
- **Net Improvement:** The sum of changes to vulnerability across hazards because a project may decrease vulnerability to some hazards but increase vulnerability to others
- **Improvement Score: -8 to +8 points**



CLOSER
LOOK



CARE: RESILIENCE ELEMENT

Resilience Score

(Maximum of 40 points)

Vulnerability Score Matrix						
Potential Projects	Extreme	5	5	4	3	2
	Severe	5	4	3	2	1
	Significant	4	3	2	2	1
	Moderate	3	2	2	1	1
	Low	2	1	1	1	1
Adaptive Capacity Classification	Low	Low-Med	Med	Med-High	High	



Vulnerability
Score
(up to 5 pts)



Improvement
Score
(-8 to 8 pts)



**Resilience
Score**
(up to 40 pts)

CLOSER
LOOK



CARE: THE CAR PILLAR ELEMENT

How well does the project implement specific objectives of the CAR Pillar Goals?



- **Goal 1:** Continue to invest in wildfire preparedness and resiliency strategies
- **Goal 2:** Invest in the community to enhance resiliency and become carbon neutral by 2030
- **Goal 3:** Make all County facilities carbon free, zero waste and resilient
- **Goal 4:** Maximize sustainability and emissions reductions in all County Fleet vehicles
- **Goal 5:** Maximize opportunities for mitigation of climate change and adaptation through land conservation work and land use policies

CLOSER LOOK



CARE: THE CAR PILLAR ELEMENT



- **Degree:** The extent to which the project would implement the CAR Pillar objective
- **Impact:** How the project would result in implementation of the CAR Pillar objective

CAR Pillar Alignment Matrix

Impact on Objectives	CAR Pillar Alignment Matrix				
	Fully	Significantly	Moderately	Minimally	Not at All
Directly Implements	10	7	5	2	0
Indirectly Implements	5	3	1	0	0
Is Generally Aligned	2	1	1	0	0
Is Unrelated	0	0	0	0	0
Adversely Affects	-10	-7	-5	-2	0

CLOSER LOOK



CARE: MODELS, PLANS & TOOLS

Criteria:

- Whether and how highly a project was prioritized by a specific Climate Action/Resiliency plan, tool, or model (the CAR Division will maintain a list of these)
- Whether the climate and/or resilience aspects of the project were specifically evaluated in a plan, tool, or model focused on other policies

Scoring:

- Points awarded based on the specificity and rigor of the evaluation
- Points awarded based on the extent to which the evaluation recommended the project

Plans, Tools, & Models Matrix						
PT&M Review		Highest	High	Supported	Implied	Low
	Specific, Detailed & Rigorous	10	8	5	2	0
	Categorical & Rigorous	8	6	3	1	0
	Categorical & Generic	6	3	1	0	0
	Extrapolated	4	2	0	0	0
	Inferred	2	1	0	0	0

CLOSER LOOK



CARE: CLIMATE EQUITY

Goals:

- Equitable access to CAR **decisions** by communities experiencing vulnerabilities
- Equitable access to CAR **services/benefits** by communities experiencing vulnerabilities
- **Just transition** for communities experiencing vulnerabilities to a green economy

Scoring:

- Points awarded based on the extent to which the project achieves each of the three goals
- Equity Score is the sum of points awarded in each category



CLOSER LOOK



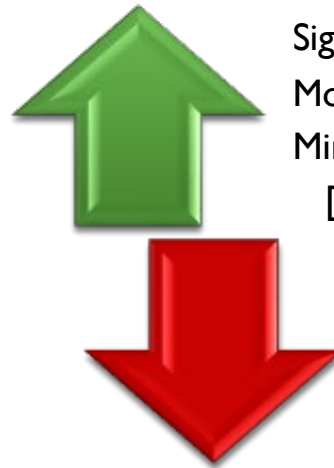
CARE: CLIMATE EQUITY

Access to Decisions



- Points awarded based on which stance the project embodies
- 0 to 5

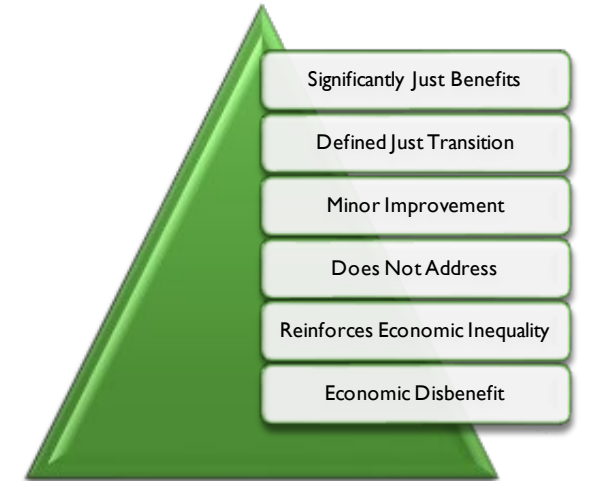
Access to Services / Benefits



Significant Improvement
 Moderate Improvement
 Minor Improvement
 [No Change]
 Reinforces Unequal Access
 Disproportionate Exclusion

- Points awarded based on degree of access the project will result in
- -5 to 5

Just Transition



- Points awarded based on which outcome the project will result in
- -5 to 5

CLOSER LOOK



STRATEGIC PLAN ALIGNMENT

- Points awarded for:
 - Extent to which the project implements, supports, or interferes with the goals & objectives of other Pillars of the County's Strategic Plan
 - Matrix approach to assessing "extent" and awarding points
 - Maximum of 5 points available

		Other Strategic Plan Pillar Alignment Matrix				
		Fully	Significantly	Moderately	Minimally	Not at All
Impact on Goals	Directly Implements	5	3	2	1	0
	Indirectly Implements	3	2	1	0	0
	Is Generally Aligned	1	1	0	0	0
	Is Unrelated	0	0	0	0	0
	Adversely Affects	-5	-3	-2	-1	0



Points awarded for:

- **Secured cost sharing & use of Non-County funds** **10 pts**
- **Opportunity Group:** **5 pts**
 - Gateway Project necessary for future projects
 - Return on Investment
 - Partnerships
- **Alignment with Federal / State criteria for funding** **5 pts**



Cost Sharing

- Points awarded for:
 - Extent to which the project includes co-funding with non-County funds
 - Up to 9 points awarded for percent co-funding
 - Bonus point if more than 50% of co-funding is private
 - Total of 10 pts available

CLOSER LOOK



STRATEGIC LEVERAGING: OPPORTUNITY GROUP

		Gateway Project Matrix				
		Essential	Very Important	Important	Helpful	Somewhat Helpful
Future CAR Pillar Implementation	Fully and directly enables	5	4	3	2	1
	Partially and directly enables	4	3	2	1	0
	Significantly and indirectly	3	2	1	0	0
	Generally enables	2	1	0	0	0
	Generally supports	1	0	0	0	0

		ROI Matrix				
		Highly Certain	Very Likely	Likely	Somewhat Likely	Speculative
Expected Return on Investment	Substantial and Near Term	5	4	3	2	1
	Substantial but Long Term	4	3	2	1	0
	Moderate and Near Term	3	2	1	0	0
	Moderate and Long Term	2	1	0	0	0
	Minimal	1	0	0	0	0

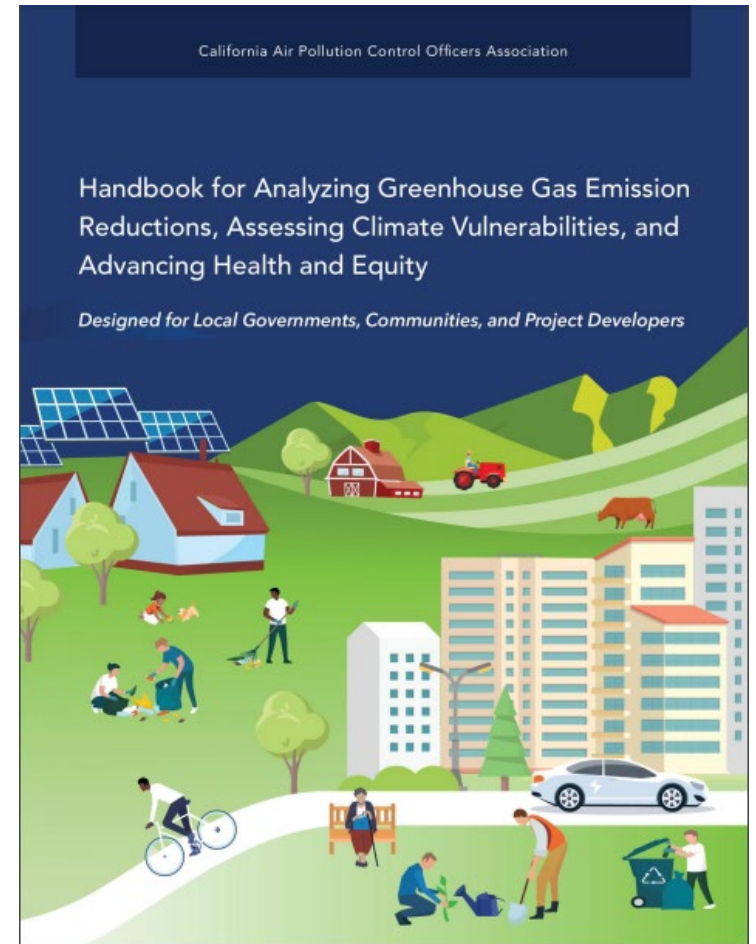
		Partnership Matrix				
		Full Partner	Collaborate	Involve	Consult	Potential
Value add of relationship/s	Creates new foundational, or multiple	5	4	3	2	1
	Creates new	4	3	2	1	1
	Introduces new aspect	3	2	1	0	0
	Continues existing	2	1	0	0	0
	Doesn't utilize existing/obvious	-2	-2	-2	-2	-2

Scoring:

- Points awarded in each applicable matrix
- A total of 5 points is available from all matrices combined
- With current projects, no project would have scored more than 5, but we are evaluating how to weight contributions in the future

RESOURCE

- Approach informed by CAPCOA Handbook (updated Dec. 2021)
- Consulted Handbook approaches to evaluating co-benefits, assessing resilience & awarding points



Questions



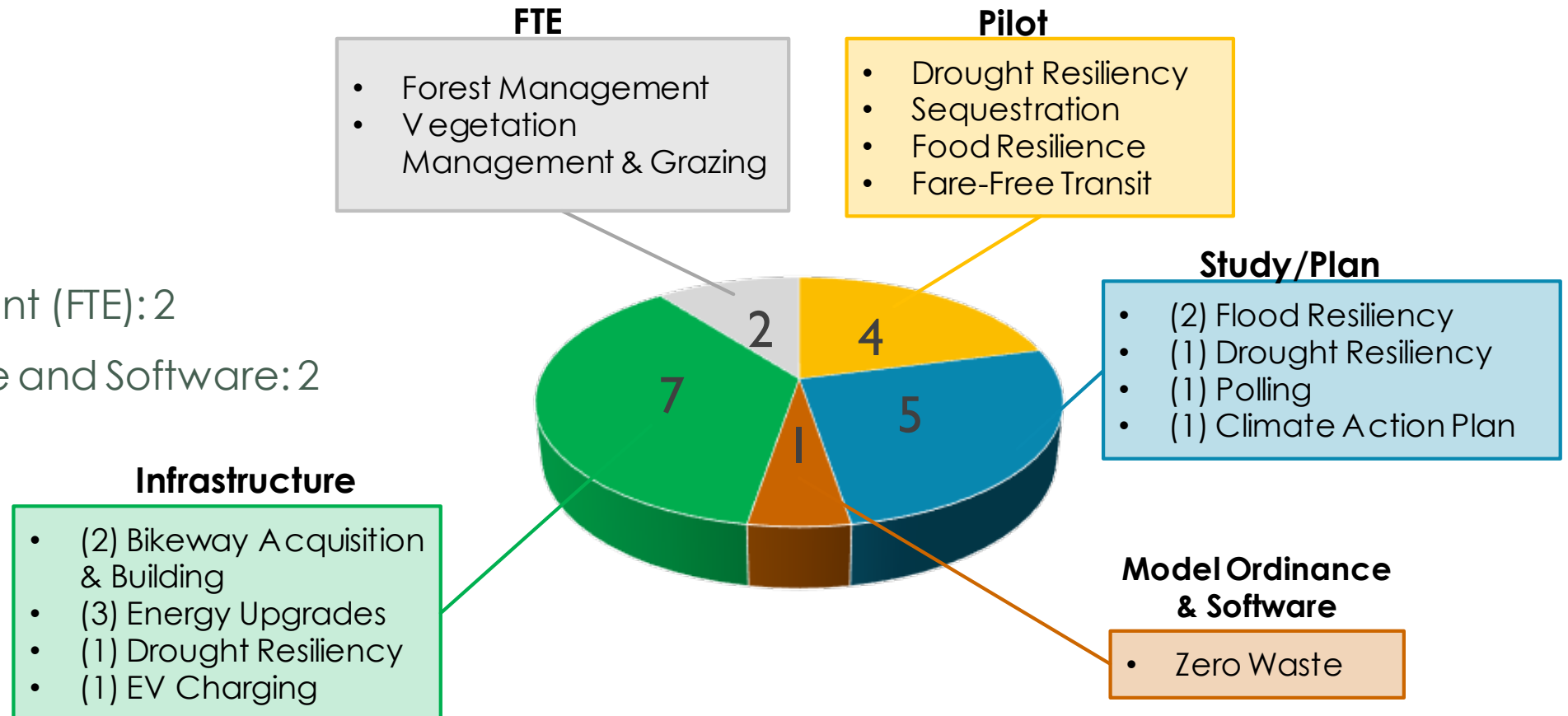
OVERVIEW OF FUNDING REQUEST

- **Climate Resiliency Fund (CRF)**
 - \$10 million allocated (May 11, 2021) by your Board from PG&E Settlement
 - Priorities developed by Climate Ad-hoc with staff, partner, & public input
 - Projects by County departments and agencies
 - Near term implementation & multiple benefits
 - Leverage outside funding
- **County Climate Resilience Projects**
 - Proposals for 19 County projects (*\$12.7 M total requests*)
 - Proposals refined over Summer & Fall 2021



SUMMARY OF POTENTIAL PROJECTS

- Infrastructure: 7
- Study/Plan: 5
- Pilot: 4
- Full-Time Equivalent (FTE): 2
- Model Ordinance and Software: 2



CRF

ROUND #1 SUMMARY OF RECOMMENDATIONS

- Reserve ~ 50% of CRF for leveraging future grant funds
- Allocate ~ \$5 million for projects in Round #1
 - **Tier 1:** Strongly recommend funding for 10 top-ranked projects based on Performance Score and Cost (low Performance Cost)
 - **Tier 2:** Recommend funding for 2 projects based Performance Score (high Performance Cost)
 - **Tier 3:** Consider funding for 1 lower-scoring planning project
- Support departments and agencies whose projects were not selected to refine projects & leverage future outside funds
- Reconsider remaining projects, and possibly others, in Round #2

CRF ROUND #1 SUMMARY OF CRF EXPENDITURES

Tier	Tier Allocations	Total Allocations	Round 1 Funds Remaining
Strongly Recommended	\$ 3,030,918	\$ 3,030,918	\$ 1,969,082
Recommended	\$ 1,771,230	\$ 4,802,148	\$ 197,852
Consider	\$ 250,000	\$ 5,052,148	\$ (52,148)

Approximately \$7.7 M in project requests for further refinement & leveraging outside funds in Round 2

TIER 1

STRONGLY RECOMMENDED FOR FUNDING

Applicant	Project	Rank	Performance Points	Project Cost	Performance Cost	Project Type
Gold Ridge RCD <i>(w/ Sonoma Water)</i>	Rainwater Catchment Rebate	1	54	\$185,548	\$3,436	Pilot
Sonoma Water	Flood Risk Assessment	2	68	\$275,000	\$4,044	Study/Plan
Zero Waste Sonoma <i>(w/ TPW)</i>	Const/ Demo/Deconst – Green Halo Software Service	3	30	\$121,400	\$4,047	Model Ordinance and Software
CAO	Climate Polling	4	12	\$50,000	\$4,167	Study/Plan
Sonoma Water	Drought Resiliency Plan	5	57	\$300,000	\$5,263	Study/Plan
Regional Parks	Class 1 Bikeway Acq.	6	71	\$440,000	\$6,197	Infrastructure
Sonoma Water	FloodMAR Feasibility Study*	7	60	\$400,000	\$6,667	Study/Plan
Regional Parks	Doran Solar Installation	8	53	\$378,720	\$7,146	Infrastructure
RCPA <i>(w/ Ag + OSD)</i>	Carbon Sequestr. - Compost	9	56	\$500,000	\$8,929	Pilot
Permit Sonoma	Forester Position	10	42	\$380,250	\$9,054	FTE

*The FloodMAR project was submitted as a Feasibility Study, and alternatively as a Pilot; the Study ranked higher.

TIER 2

RECOMMENDED FOR FUNDING

Applicant	Project	Rank	Performance Points	Project Cost	Performance Cost	Project Type
General Services	Resilient Veterans Building	13	63	\$870,000	\$13,810	Infrastructure
General Services	Veterans Building Energy Upgrades	15	50	\$901,230	\$18,025	Infrastructure

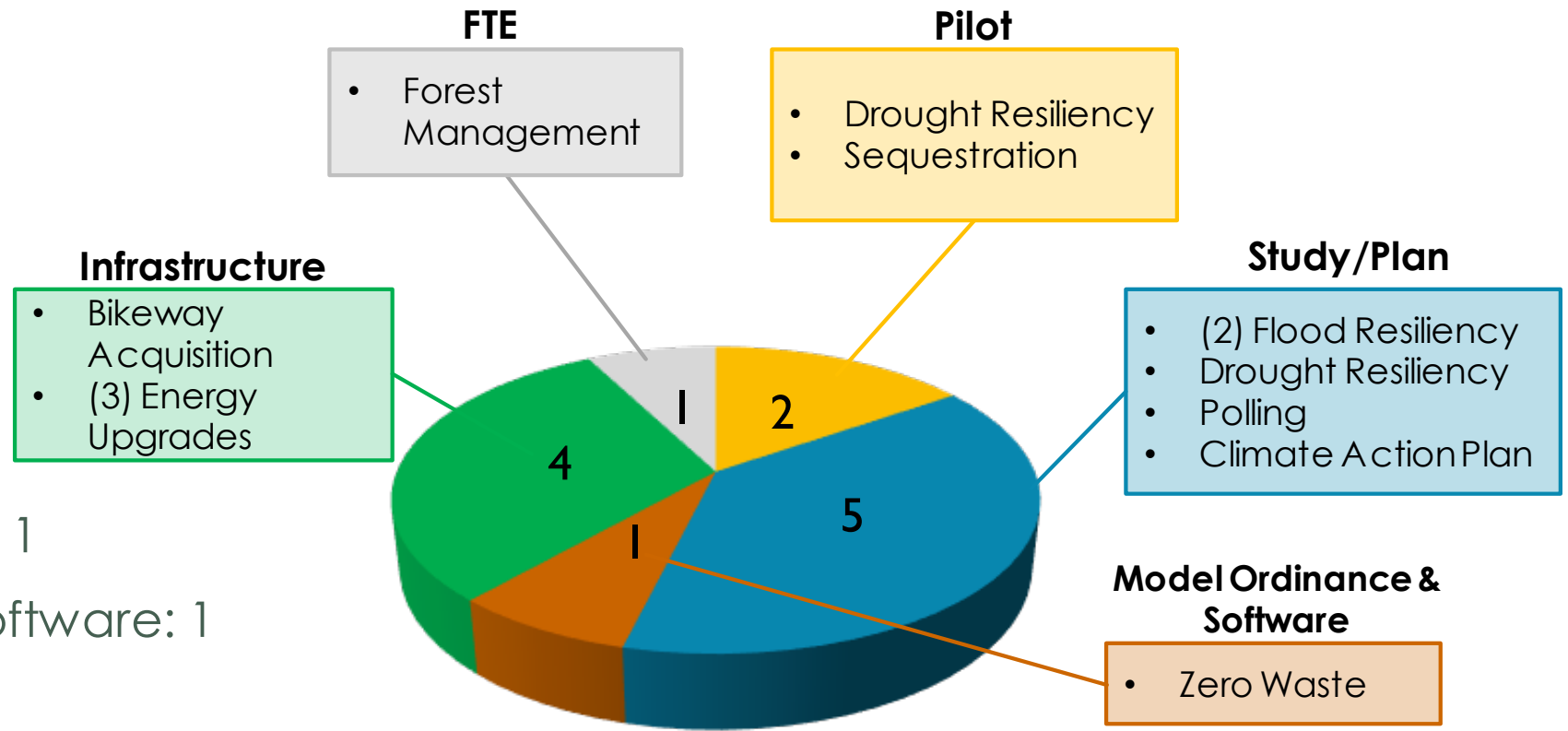
TIER 3

CONSIDER FUNDING

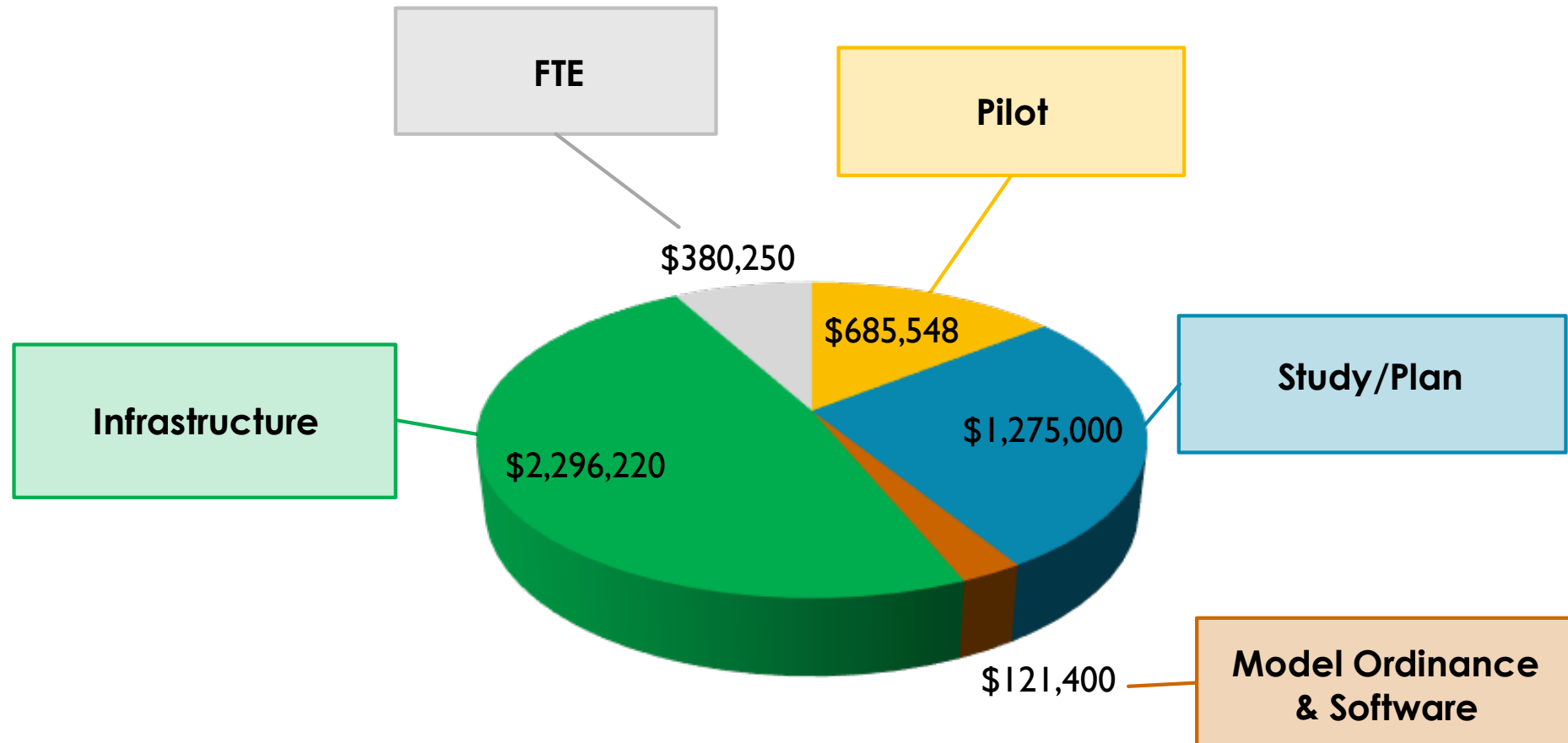
Applicant	Project	Rank	Performance Points	Project Cost	Performance Cost	Project Type
Regional Parks	Climate Action Plan	14	18	\$250,000	\$13,889	Study/Plan

CRF ROUND #1 SUMMARY OF TIERS 1 - 3 PROJECTS

- Study/Plan: 5
- Infrastructure: 4
- Pilot: 2
- Full-Time Equivalent (FTE): 1
- Model Ordinance and Software: 1



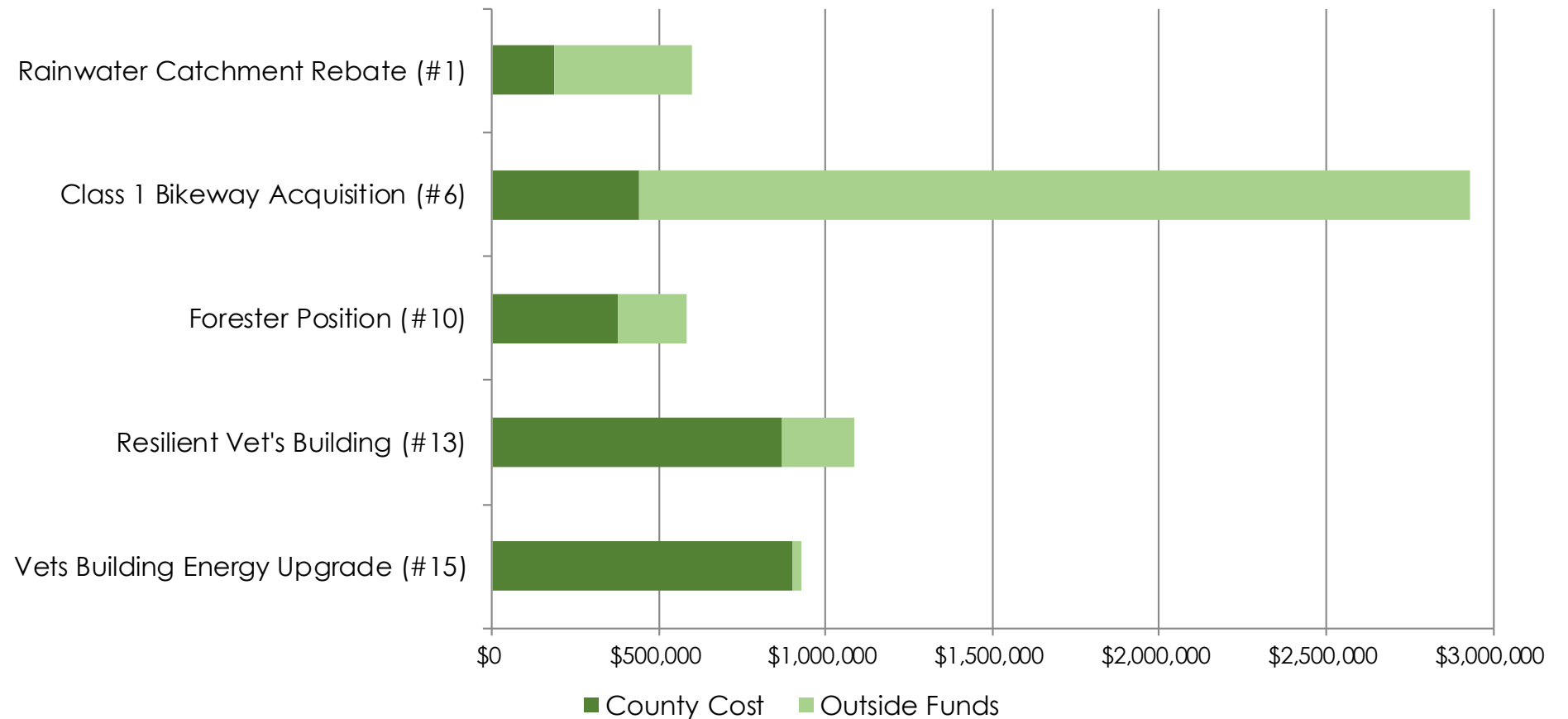
CRF ROUND #1 COST BREAKDOWN OF TIERS 1 - 3



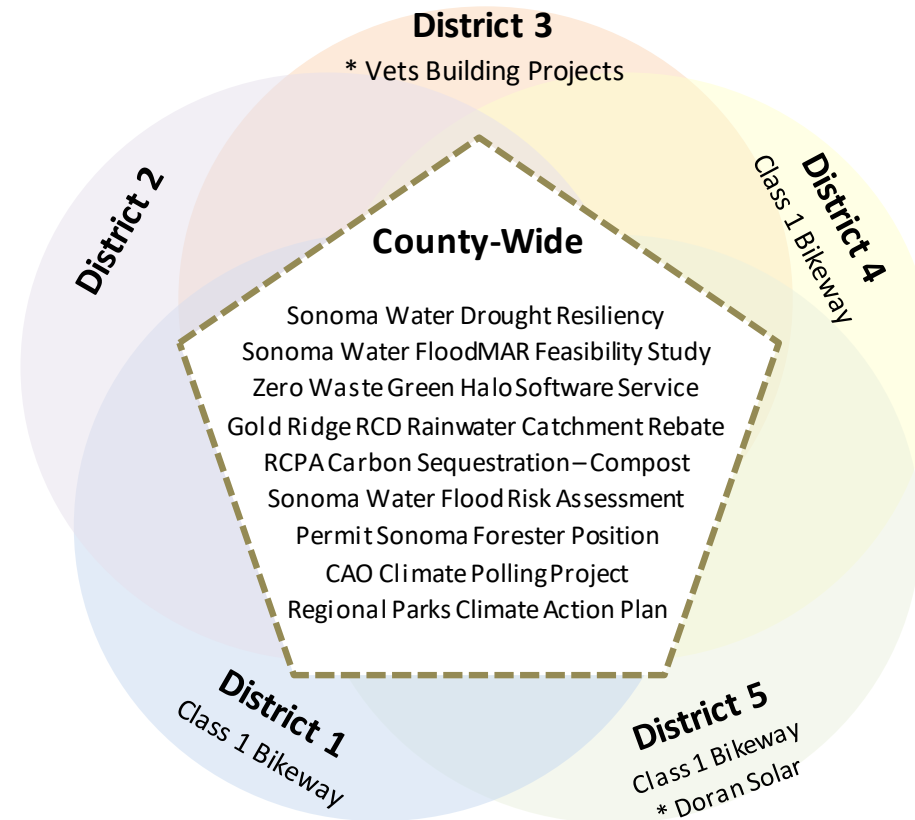
CRF

ROUND #1 LEVERAGING OF OUTSIDE FUNDS OF TIERS 1 - 3

- Round 1 potential County expenditures: **~\$5 M**
- Round 1 potential outside cost sharing: **~\$3.4 M**



CRF ROUND #1 PROJECT LOCATIONS OF TIERS 1 - 3



* Demonstration projects with the potential to expand into other districts

CRF ROUND #2

RECOMMEND FURTHER REFINEMENT & LEVERAGE OUTSIDE FUNDING

Applicant	Project	Rank	Performance Points	Project Cost	Performance Cost	Project Type
UCCE Sonoma	Managed Grazing & Veg. Mgmt	11	41	\$450,000	\$10,976	FTE
UCCE Sonoma	Community Food*	12	46	\$593,200	\$12,896	Pilot
Regional Parks	Rain Water Catchment	16	29	\$607,500	\$20,948	Infrastructure
General Services	EV Infrastructure**	17	56	\$2,800,000	\$50,000	Infrastructure
Transportation & Public Works	Bikeable Sonoma	18	28	\$1,900,000	\$67,857	Infrastructure
Sonoma County Transit	Fare Free Transit***	19	19	\$1,300,000	\$68,421	Pilot

*The Community Food program received the highest Climate Equity rating making it attractive for co-funding

**EV Infrastructure projects are inherently expensive, however leveraging with federal, state, and regional funding is highly likely

***With additional data and refinement Fare Free Transit could score better, and leveraging with federal, state, or regional funding is possible

NEXT STEPS

- **Round #1 of Climate Resilience Funding:** Board decides allocations
- **Round #2 of Climate Resilience Funding:**
 - Staff solicits Round #2 project proposals from County departments and agencies
 - Staff works departments and agencies with unfunded Round #1 projects to refine and identify outside funding opportunities
 - Board reconsiders remaining projects, and possibly others, for funding in Round #2
- **CARE Framework:** Staff continues collaborating with partners and tracking State and Federal priorities to refine CARE framework
- **Accountability:** Staff tracks & updates Board on CRF project outcomes