



**County of Sonoma
Santa Rosa Memorial Hospital
Level II Trauma Service Contract**

Current Contract

Level II Trauma Services

County of Sonoma and Santa Rosa Memorial Hospital entered into the current agreement for Level II trauma services on May 1, 2010

- **8-year initial term with option to extend (executed in May 2018)**
- **Current agreement to expire April 30, 2022**
- **Trauma contracts historically have extended terms due to overall cost affiliated with providing higher level of services and allows a mutual term for the EMS Agency to provide oversight and proper audits**
- **American College of Surgeons (ACS) verified for the last 16 years**
- **Santa Rosa Memorial Hospital provides the community with a team of doctors that are immediately available to handle life-threatening injuries in trauma patients**
- **Trauma treatment capabilities far exceed the highly-trained emergency room staff and trauma surgeons immediately available to handle advanced trauma level care but extend to neurosurgeons, trauma orthopedic surgeons, plastic surgeons, urology, interventional radiology, ICU physicians and anesthesiologists**

Contract Mitigation Efforts

Environmental Impact Report (1999)

- SRMH Neighbors Group (meets quarterly)

Successful Mitigation Improvements:

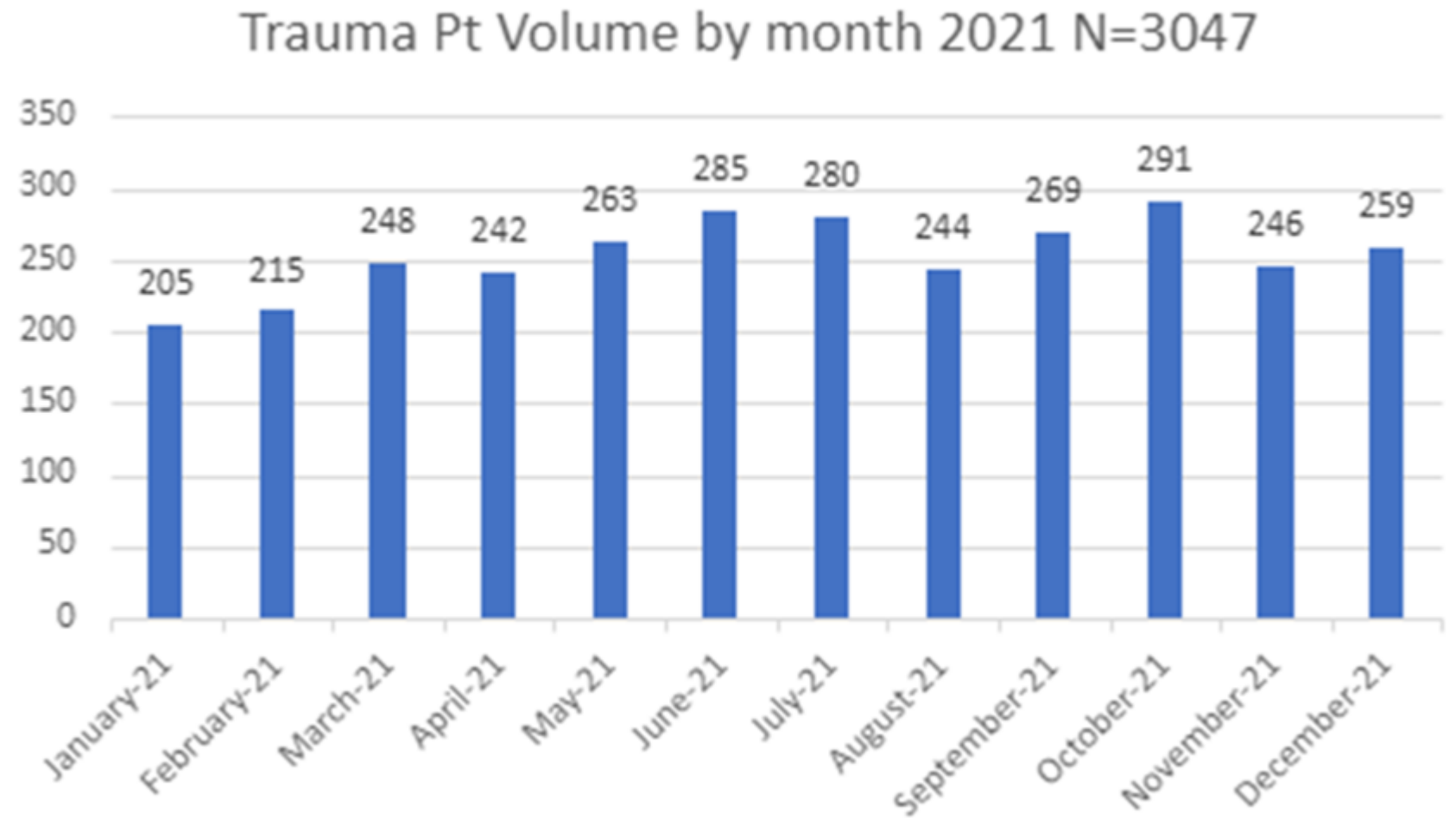
- 2013 new REACH helicopter fleet with quieter engines
- Adventist Health – Mendocino County receiving Level IV authorization to offset some trauma traffic
- New mitigation smart sheet to collect flight inquiries and track flight data
- EMS Aircraft Committee meets quarterly for education and call review

But why only one LEVEL II trauma center?

- cost, skill base, experience, staffing

Santa Rosa Memorial Hospital Trauma Data

- This includes 41 pediatric patients in 2021 (aged 15 years or younger)



Community Meeting

- The Neighbors group requested the County of Sonoma host a Community Meeting and requested the leadership from the Department of Health Services, County Counsel, Board of Supervisors and Coastal Valleys EMS Agency be represented.
- On January 24th, County of Sonoma and Coastal Valleys EMS Agency hosted meeting:
 - Meeting Facilitator, Oscar Chavez
 - Department of Health Services Director, Tina Rivera
 - Supervisor Gorin & Supervisor Coursey
 - Coastal Valleys EMS Agency Administrator, Bryan Cleaver
 - Coastal Valleys EMS Agency Coordinator, Jen Banks
 - Santa Rosa Memorial Hospital, Dr. Brian Schmidt & Dr. Omar Ferrari & Regional Chief Operating Officer, Frank Beirne
- All questions and comments submitted through the meeting were submitted with this item as public comment. Four members of the public submitted questions/comments. Responses were provided in writing on February 24, 2022.

Revised language in new Trauma Contract

Whereas to recognize Neighbors concerns

- WHEREAS it is recognized that the residents in the area around the hospital have expressed concerns regarding the increased aircraft traffic resulting from trauma designation.
- WHEREAS the hospital and EMS Agency are committed to complying with current mitigations identified in the Environmental Impact Report. Mitigations already in place include, but not limited to, participation in regular meetings of the neighbors group and an established process for neighbors to submit complaints for review and investigation by [WHOM] and the provision of feedback on each submitted complaint.

Sound Impact Assessment:

Within 18 months of execution of this agreement, the hospital shall complete and deliver to the County and Caltrans a sound study that (1) evaluates current Caltrans identified helicopter flight paths and at least two alternative paths, and (2) identifies which of the approved or alternative paths generates the least noise for neighboring residents of the hospital. Either party may seek Caltrans approval for any alternative flight path if the study's recommendations so warrant. The study shall be performed by a professional with the degree of skill and experience commonly possessed by other sound professionals conducting similar studies.

EMS Aircraft Flight Inquiries

- Approx. 95 percent of overall EMS trauma patients are transported to the hospital by ground transport units
- Santa Rosa Memorial Hospital provided a snapshot of flight inquiries for Jan-Jun 2020
 - Of the 264 landings, inquiries were filed on 13 (~5%)
 - The majority of inquiries were on the 'College A' approach
 - College A is a CALTRANS identified approach to the Helipad but not a preferred use approach by the neighbors.

Roles and Responsibilities

The EMS Agency is responsible for the designation of the Trauma Center

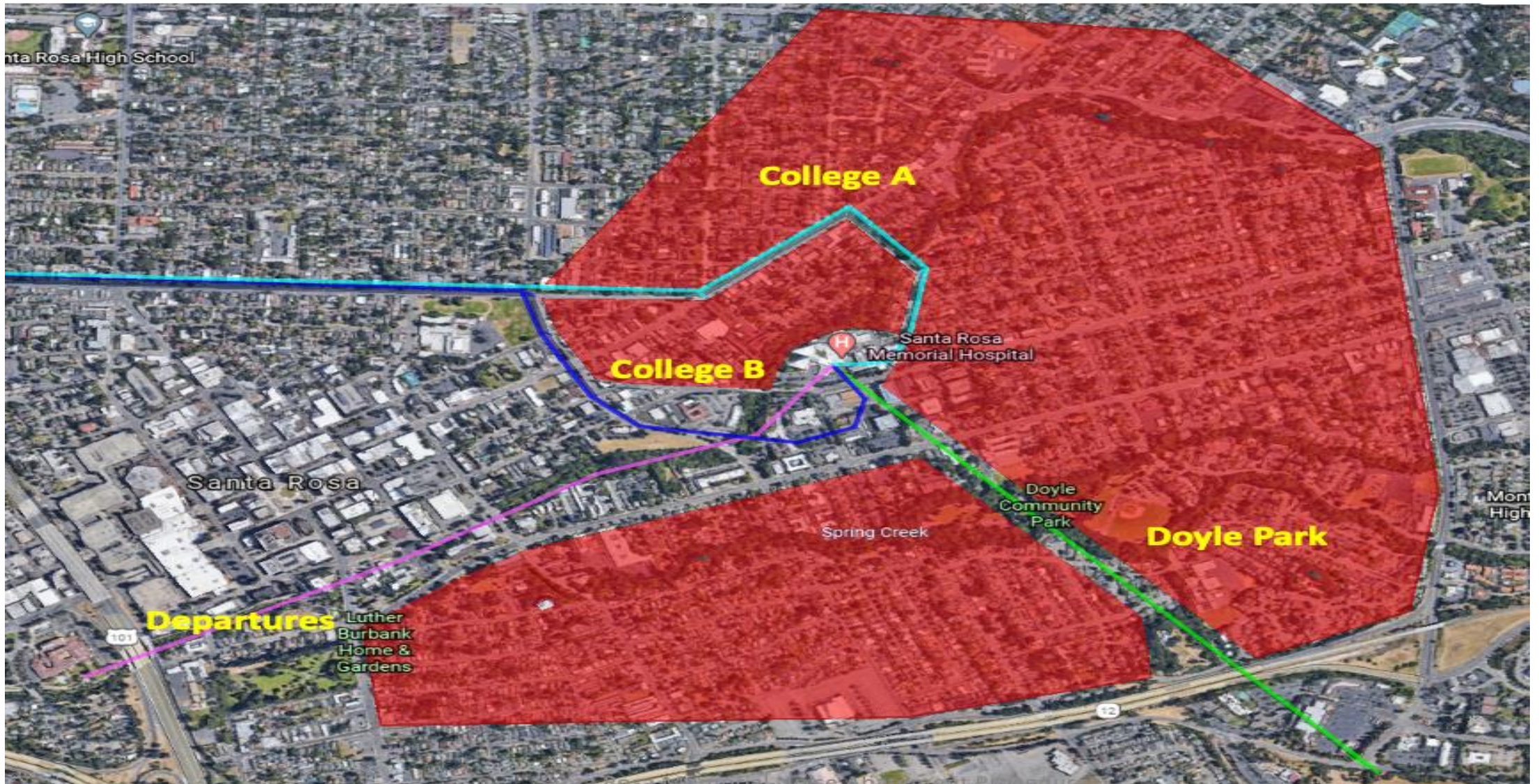
The Board of Supervisors approves the contract that allows the EMS Agency to designate Trauma Centers

CALTRANS is responsible for approval of the Helipad

The Federal Aviation Administration (FAA) conducts research and develops systems and procedures needed for a safe and efficient system of air navigation and air traffic control.

- The EMS Agency and the County of Sonoma can not dictate the routes of aircraft. We do however have preferred routes into the hospital that are identified as the least impactful on the residents

Current Flight Paths into SRMH



Lat. 38° 26.63' N Long. 122° 42.02' W (NAD 83)		
LOCATION	FACILITY	HELIPORT
<p>1165 Montgomery Drive City: Santa Rosa, 95495 County: Sonoma Loc ID: CL51 FAA Site NR: 02258.01*H</p>	<p>Trauma: A-II PH: (707) 546-3210 Notes: HP Freq 155.355</p>	<p>TLOF: 53'x68' FATO: 57'x68' Max Weight: 15K Max Design Helicopter Overall Length: D 45' Lighting: Perimeter Elev: Elevated Rooftop, 28' AGL MSL: 208' Wind Sock: Yes, lighted Design Helicopter: Bell 206, MDH 500</p> <p>Notes: 1. For noise abatement, hospital requests approaches utilizing College Blvd maintain 700 MSL until reaching Brookwood Ave.</p>
		
<p>Notes: 3. Northwest approach; from College Ave, turning right to 200° 4. North approach; from Franklin Ave, turning right to 200°</p>  <p>Notes: 5. Southwest approach; from College Ave, turning left to 360° 6. Southeast approach; from Bennett Valley Rd over Doyle Park, turning right to 360°</p> <p>Rev: 09/28/2016</p>		
<p>This document is for informational purposes only and is not intended for navigation * - Primary Approach Course</p> <p style="text-align: right;">DMS: 38° 26' 38" N/ 122° 42' 01" W</p>		

User Notes:

EMS Aircraft Provider Data – REACH/CALSTAR

- Between 2019 and 2021, **25%** of all flights in the Northern Region (Lake, Mendocino, Napa and Sonoma) landed at SRMH.
- **75% of flights were routed to other hospitals**
- **A different perspective---**What would flight volume look like if Sonoma County DID NOT have a Trauma Center and all serious trauma patients had to be flow out of the hospital to receive trauma care currently provided in house?

ACS Verified Northern California Trauma Center Hospitals

(In our catchment area)

Level I Trauma Centers

UC Davis Medical Center, Sacramento County

UCSF Medical Center, San Francisco County

Level II Trauma Center

Santa Rosa Memorial Hospital, Sonoma County

Mercy Medical Center, Shasta County

Enloe Hospital, Butte County

John Muir Medical Center, Contra Costa County

Level III Trauma Center

Queen of the Valley, Napa County

Marin General, Marin County

St Joseph Hospital, Humboldt County

Level IV Trauma Centers

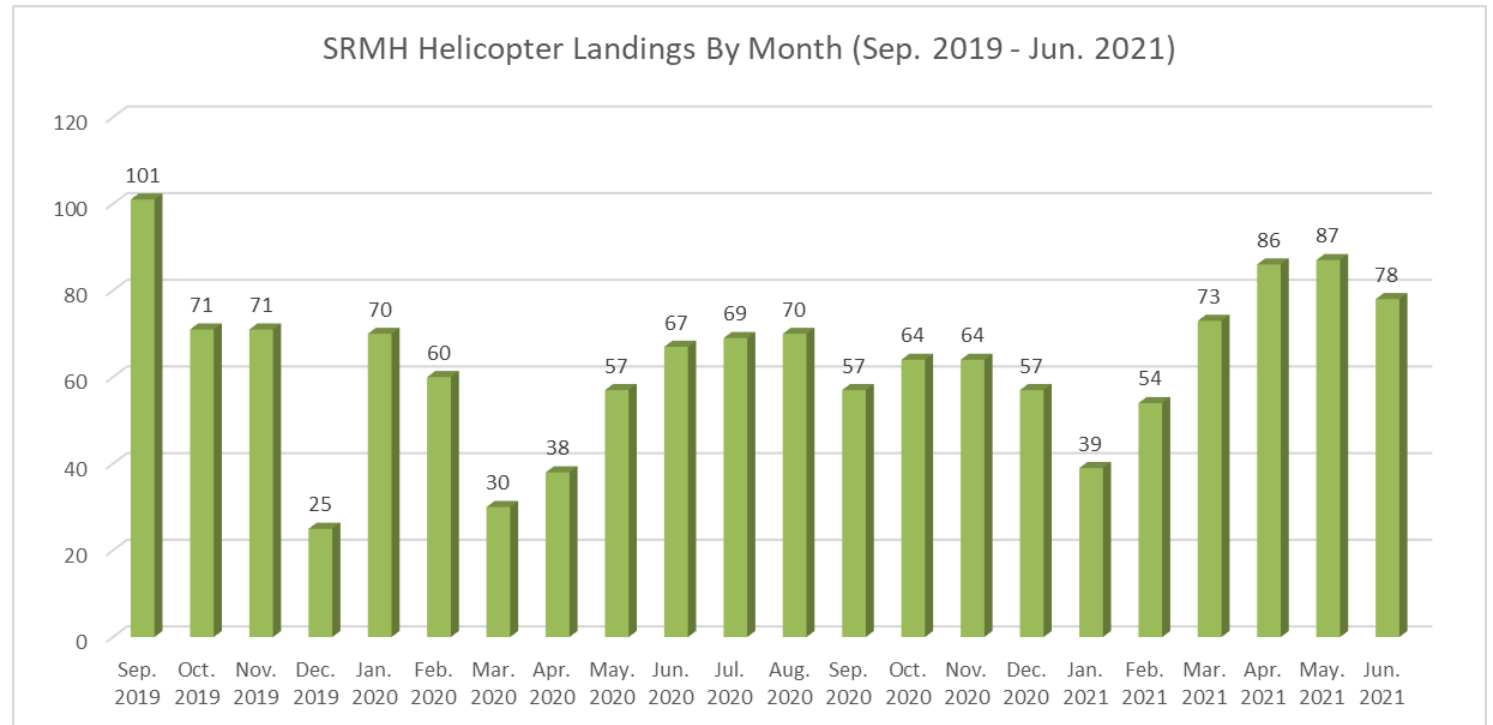
Adventist Health Ukiah Valley, Mendocino County

Adventist Health Howard Memorial, Mendocino County

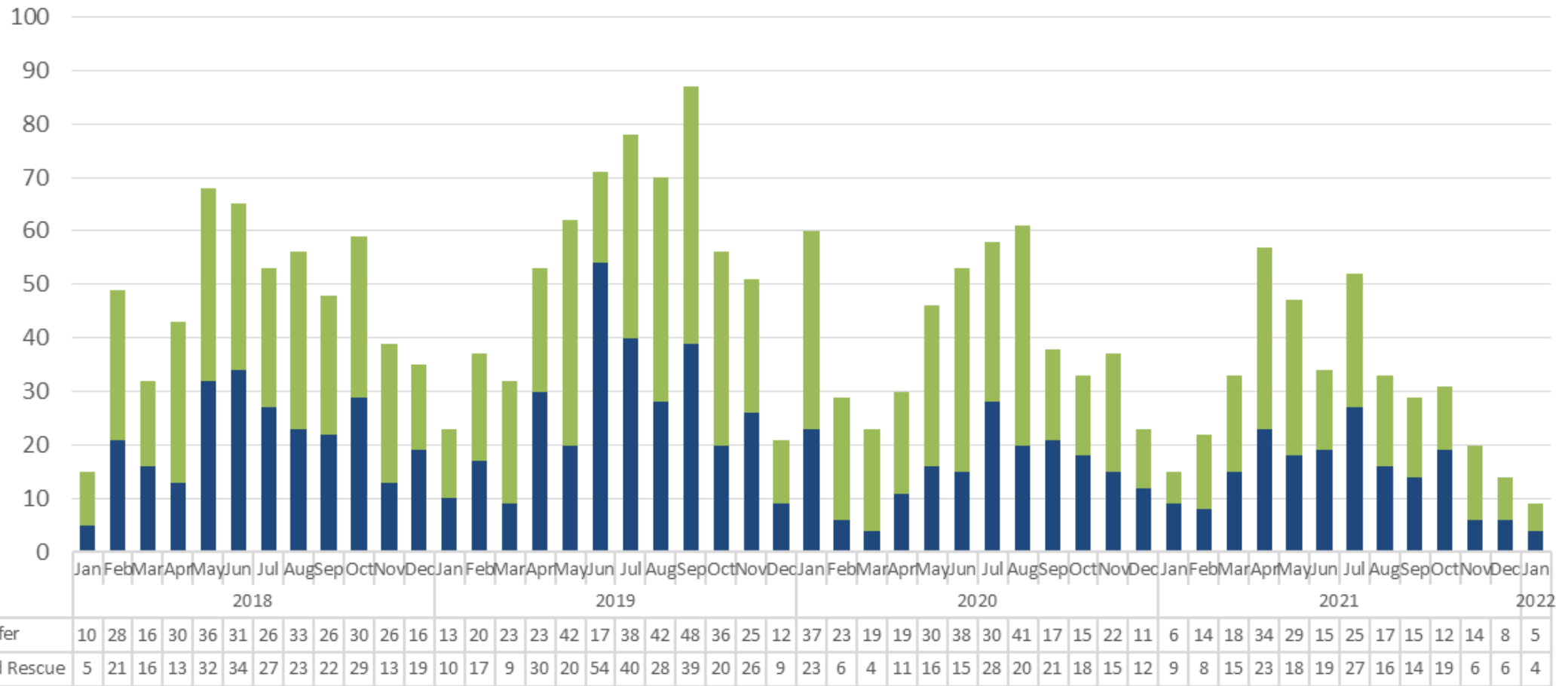
Sutter Lakeside, Lake County

Santa Rosa Memorial Hospital (SRMH) Data

- SRMH reports an average of 63 landings per month
- Approximately 64% of these calls captured by the ImageTrend system
 - Not all inbound flights originate in Sonoma or Mendocino County
 - **The following data slides represent just ImageTrend records – not all landings at SRMH.**



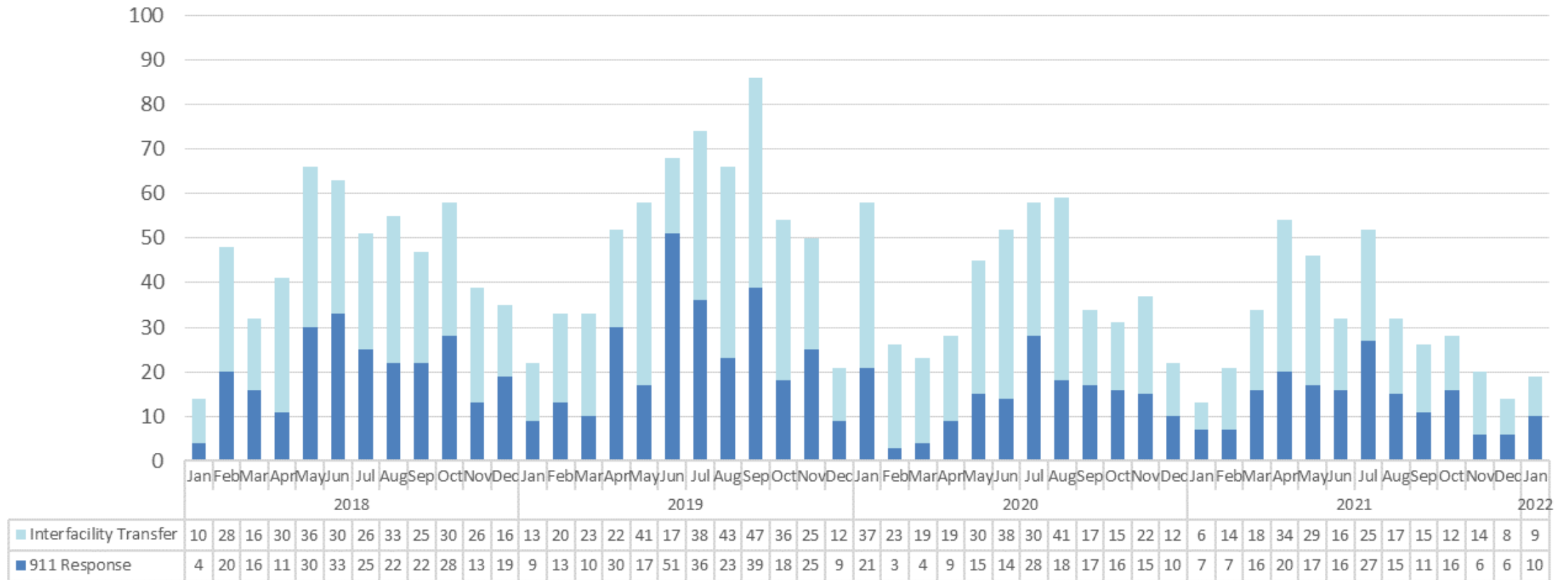
Aircraft Transports to SRMH (all agencies, all call types) by Month 2018 - Present



Graph reflects data from Combined ImageTrend and REDCOM Published 1/31/2022

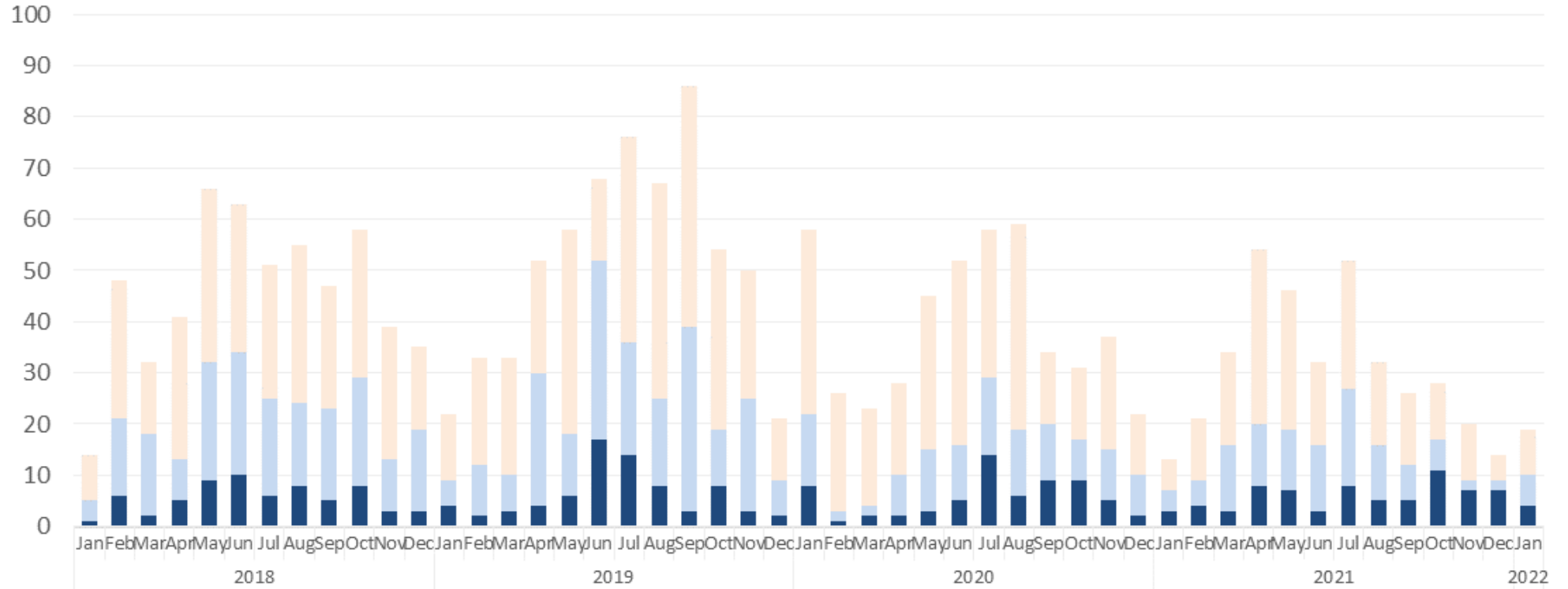
Aircraft Transports to SRMH (all agencies, all call types) by Month 2018 - Present

ImageTrend Data Only, 2.8.2022



Graph reflects ImageTrend data only (fewer records) to determine underlying reason for transport and choice of destination hospital. Data retrieved 2.8.2022.

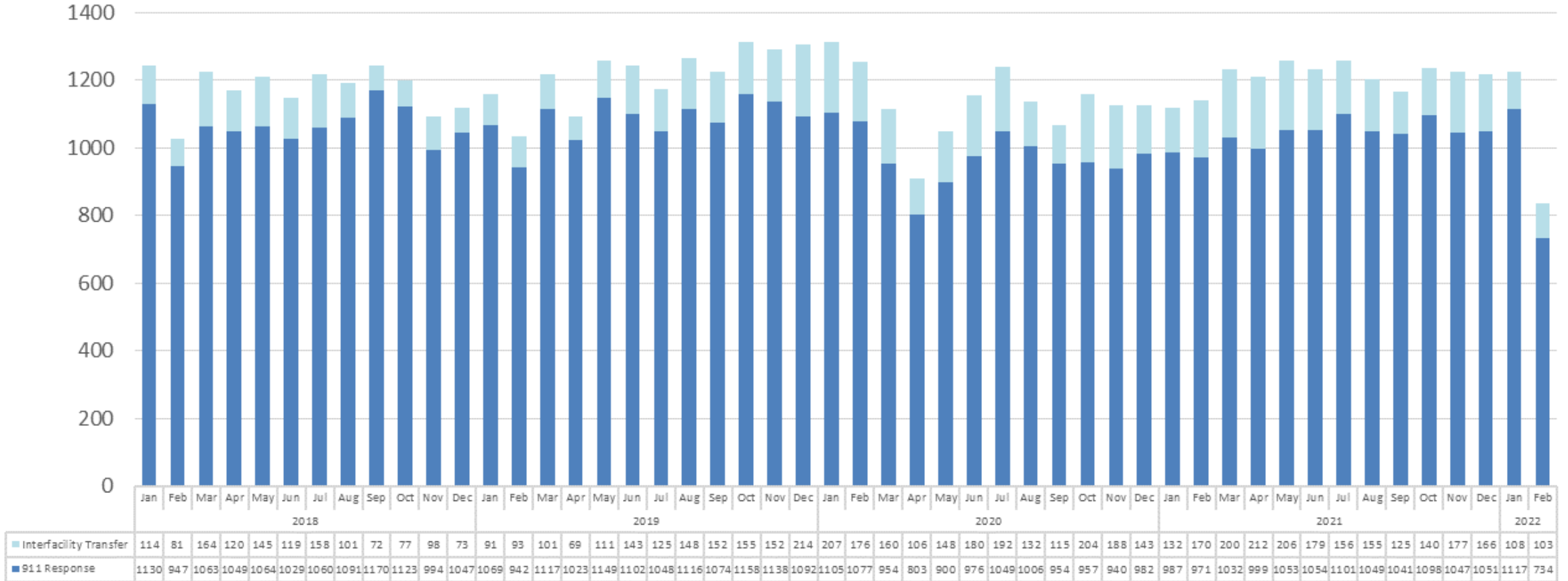
Aircraft Transports to SRMH (all agencies, all call types) by Month and Pre-arrival Trauma Activation (eDisposition.24)
 2018 - Present, ImageTrend Data Only, 2.8.2022



*Graph reflects ImageTrend data only stratified by eDisposition.24 – Destination Trauma Team Activation
 Data retrieved 2.8.2022*

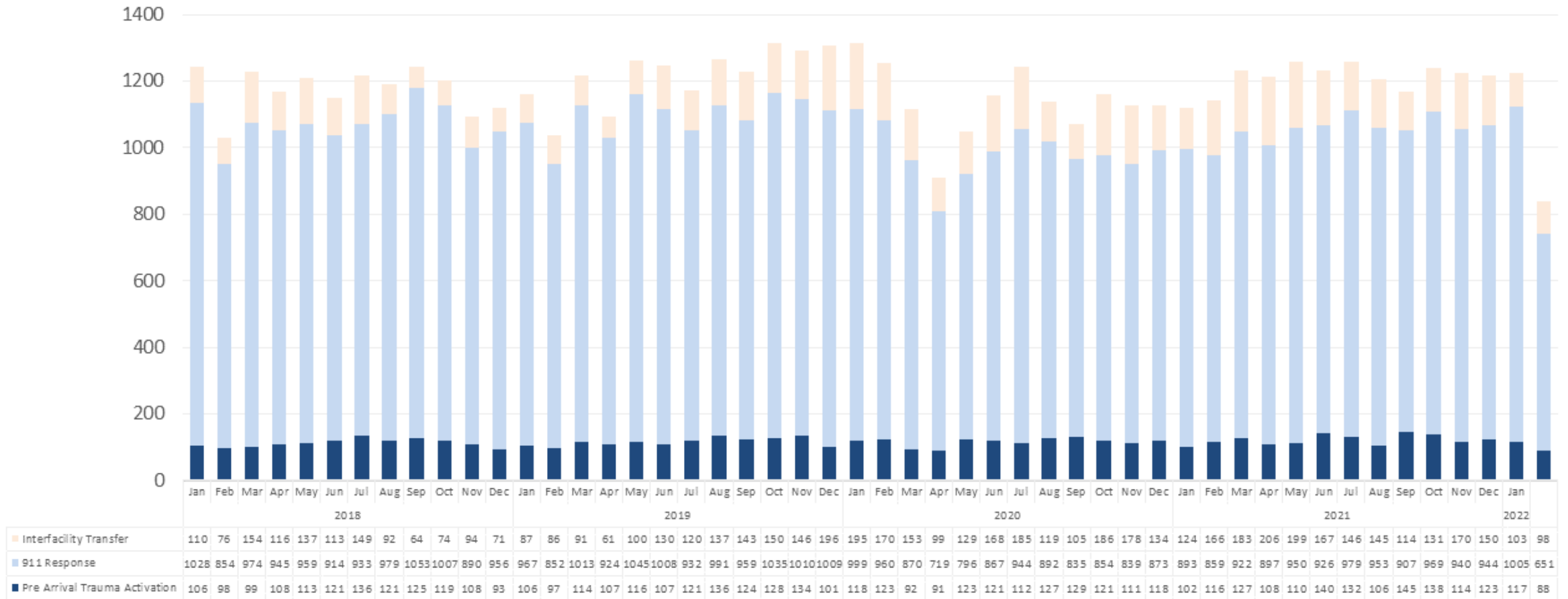
Ground Transports to SRMH (all agencies, all call types) by Month 2018 - Present

ImageTrend Data Only, 2.22.2022



ImageTrend data, Sonoma and Mendocino Transport Providers. Data retrieved 2.22.2022.

Ground Transports to SRMH (all agencies, all call types) by Month and Pre-arrival Trauma Activation (eDisposition.24) 2018 - Present, ImageTrend Data Only, 2.22.2022



*Graph reflects ImageTrend data only stratified by eDisposition.24 – Destination Trauma Team Activation
Data retrieved 2.22.2022*

Next Steps

Staff recommends approval of contract for Level II Trauma Services with Providence Santa Rosa Memorial Hospital.

If approved, contract moves forward and the residents, neighboring residents and visitors of Sonoma County will continue to be assured that highly trained and specialized medical care professionals will be immediately available to provide life-saving interventions on patients suffering from acute injuries and illness.

Questions?