

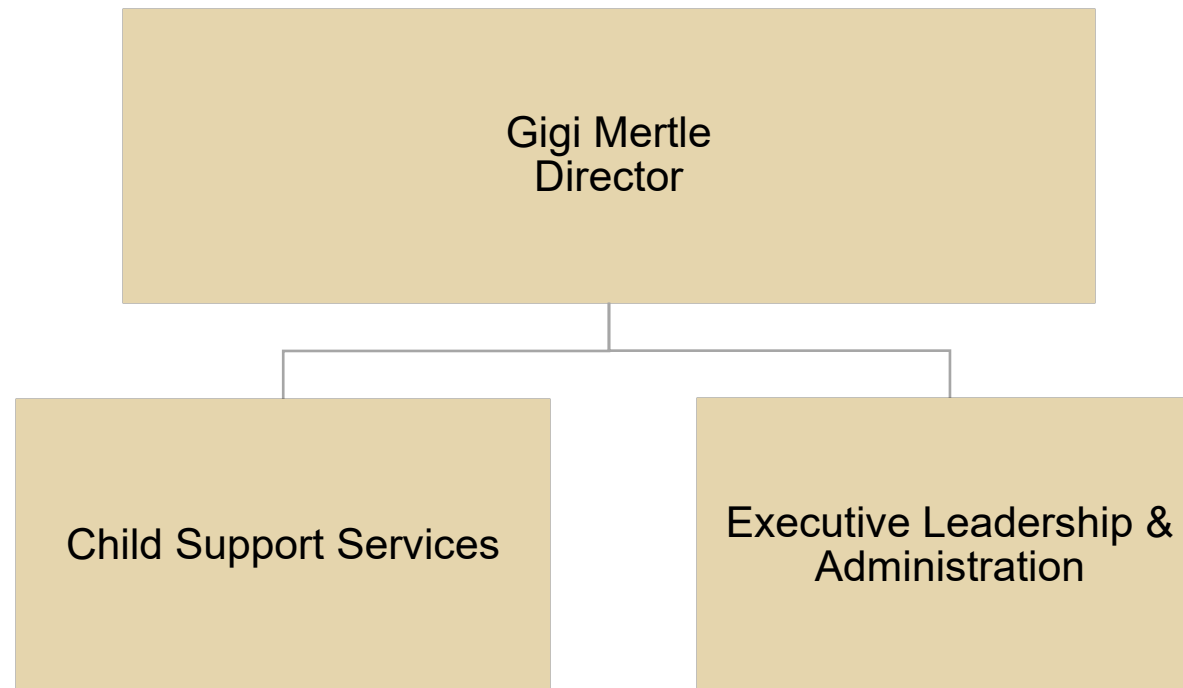
# Child Support Services

FY 2026-27 Preliminary Budget



# Department Overview

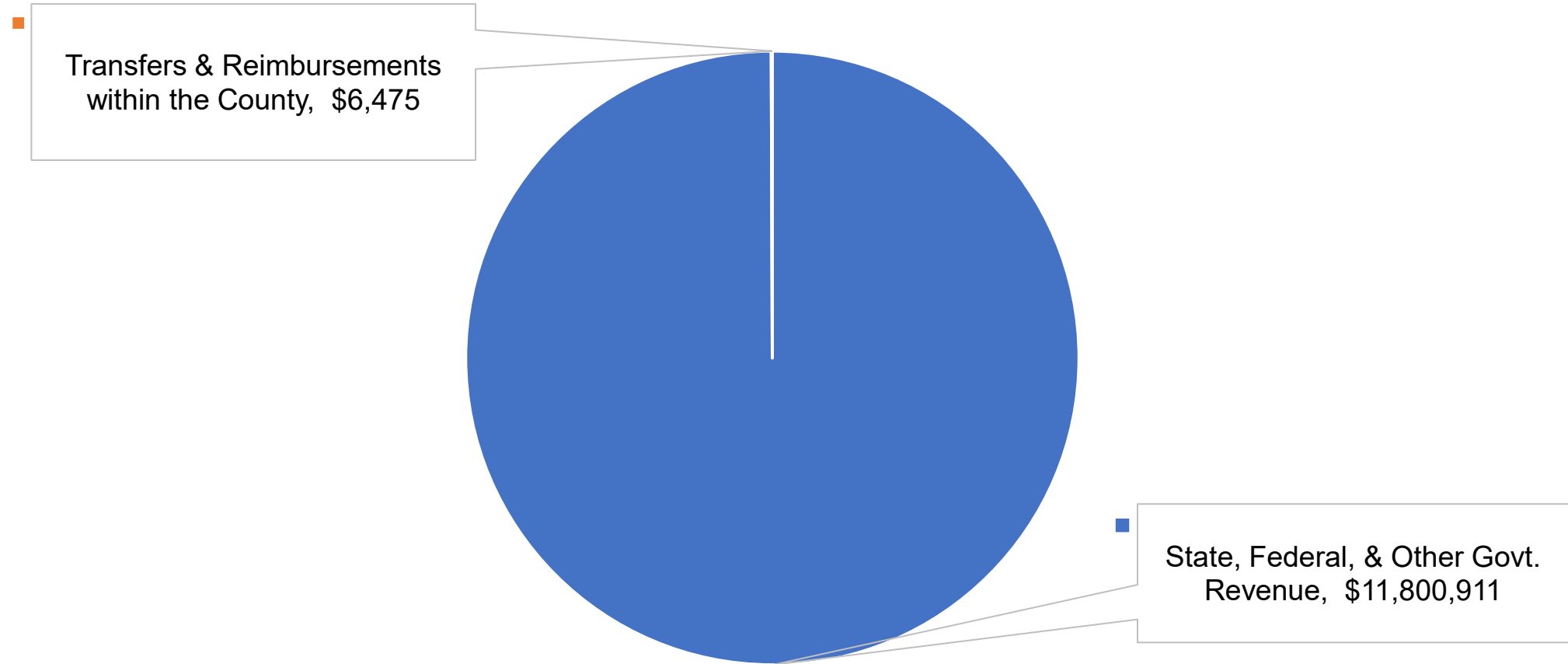
	Operating Expenditures	FTE
FY 2025-26 Adopted	\$11,748,390	59
FY 2026-27 Preliminary	\$11,807,386	58
Net Change	\$58,996	(1)



# Departmental Expenditures

<b>FY 2026-27 Service Area Expenditures</b>	<b>Preliminary Budget</b>	<b>FTE</b>
Child Support Services	\$10,510,054	53
Executive Leadership & Administration	\$1,297,332	5
<b>Gross Departmental Expenditures</b>	<b>\$11,807,386</b>	<b>58</b>
Less Internal Departmental Transfers	\$0	n/a
<b>Departmental Operating Expenditures</b>	<b>\$11,807,386</b>	<b>58</b>

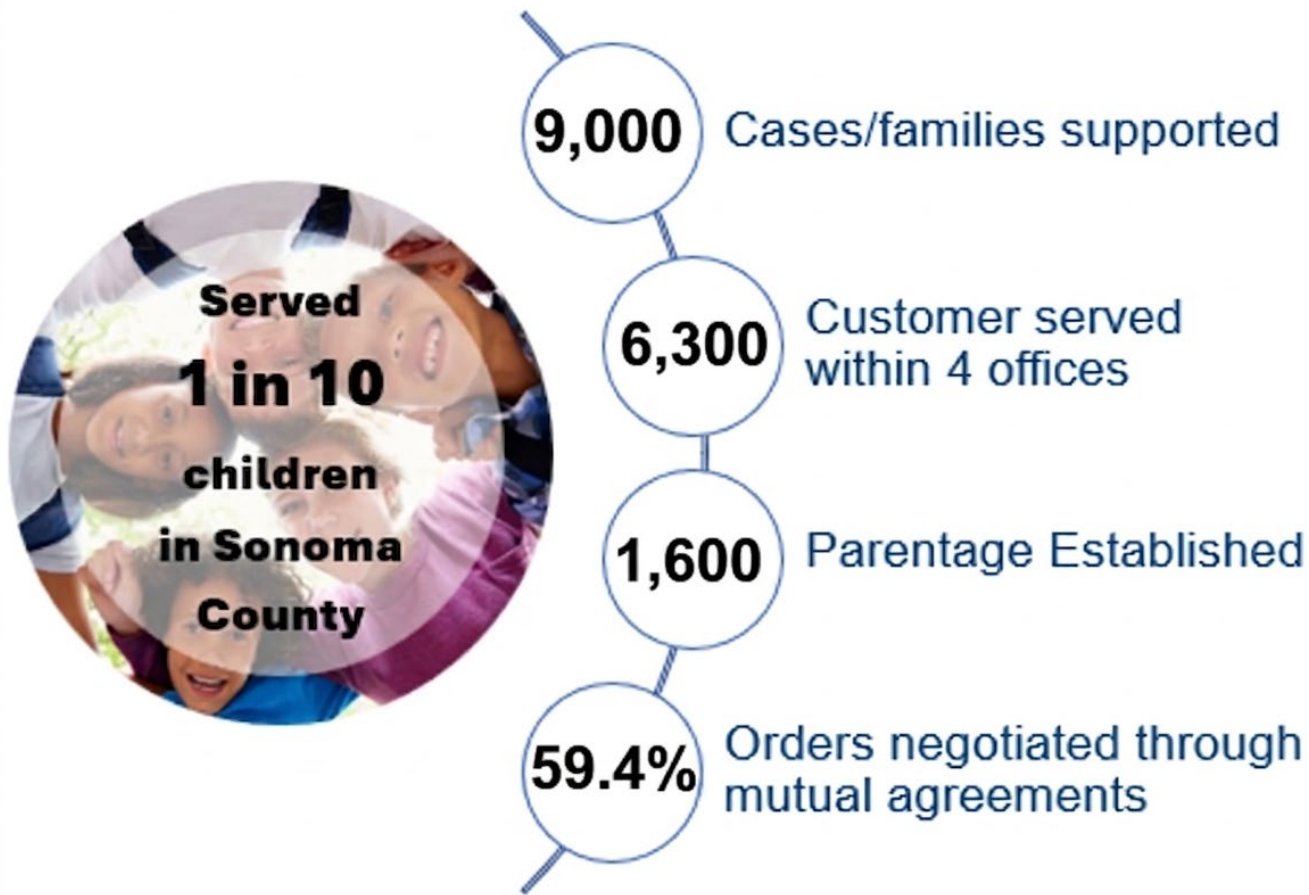
# Departmental Funding Sources



# Key Accomplishments FY 2025-26

- **Community Partnership, Engagement and Outreach:**
  - Participated in 19 outreach events and/or activities to strengthen services for families and partners across Sonoma County.
- **Access and Equity**
  - Collaboration with Mexican and Peruvian Consulates, San Francisco Immigrant Rights Commission (IRC), the Office of Civic Engagement & Immigrant Affairs (OCEIA) and Hispanic Chamber of Commerce to provide resources to immigrant families.
- **Technology and Analytical tools:**
  - Redesigned website, upgraded IT security system, analytical tools and implemented QR codes.

# DCSS Serving Our Community



Sonoma ranked **#4** in the Federal Performance Measures among all counties in California!

Measure	California Average	Sonoma Performance
Parentage Establishment	97.7%	100%
Order Establishment	87.8%	95.3%
Current Support Collection	62.3%	69.3%
Arrears Collections	62.1%	64.9%
Cost Effectiveness	\$2.23	\$2.74

# State and Federal Budget/Policy Implications

- Recent legislative changes weakened enforcement capabilities, increased workload, and are expected to cause a decline in collections:
  - Requires earning capacity assessments, increases mandatory hearings, annual reviews, and case management workload.
  - Suspends child support orders for parents while they are incarcerated and for up to 10 months after release, helping them regain the ability to pay.
  - Limits driver's license suspension for low-income parents, which reduces enforcement tools, but promotes stable employment and income.

# Key Challenges

- Uncertain and unstable funding environment.
- Federal and State legislative changes that directly impact families in the Safety Net programs.
- Declining caseloads and resources to support families.

# Key Operational Objectives

- **Equity and Access:**
  - Collaborate with community partners to strengthen equitable access and ensure all customers feel safe and supported.
  - Partner with Office of Equity to implement internal protocols and provide professional development opportunities on racial equity.
- **Community Partnership, Engagement and Outreach:**
  - Utilize GIS tool for outreach and targeted support services.
  - Increase partnership with Hospitals and Birthing Centers.
  - Education and enhanced support to local Employers.
- **Mobile Office deployment to all Supervisorial districts.**
  - Collaborate with Local CBOs to increase access and support to underserved and hard-to-reach communities where they are located.