

September 10, 2024

# Climate Resilience Comprehensive Action Plan & Near Term Funding



## Climate Resilience Comprehensive Action Plan

County of Sonoma  
County Administrator's Office

*Climate Action and Resiliency Division*

*September 2024*



COUNTY OF SONOMA  
Climate Action and Resiliency



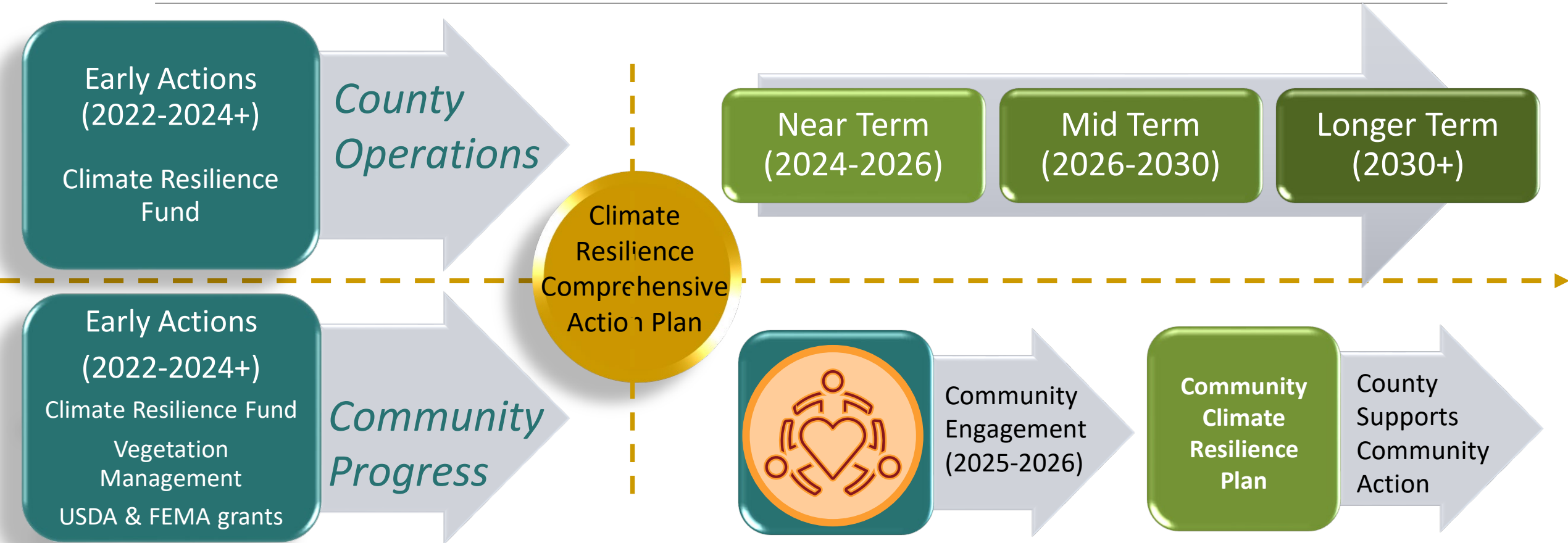
# Make Sonoma County Carbon Neutral by 2030

---

- ❖ Invest in wildfire resilience and preparedness
- ❖ Invest in community resilience and carbon neutrality
- ❖ Make all County facilities carbon free, zero waste and resilient
- ❖ Maximize sustainability and emissions reductions in all County Fleet vehicles
- ❖ Maximize opportunities for mitigation of climate change and adaptation through land conservation work and land use policies

# Carbon Neutral 2030

## County Operations & Community Progress



# Community Engagement Strategy

- ❖ Advisory Committee of Trusted Community Voices
- ❖ Operationalize the Strategy
- ❖ Collaborative Engagement
- ❖ Culturally Relevant Venues & Events
- ❖ Identify Priorities, Needs, Barriers, Opportunities
- ❖ Prepare Prioritized Recommended Actions for County Support of Community Climate Resilience



# Climate Plan Measures

## BUILT ENVIRONMENT SOLUTIONS (MITIGATION)

**Energy**



**Transportation**



**Zero Waste**



## NATURE-BASED SOLUTIONS (SEQUESTRATION)

**Water**



**Wildfire**



**Natural and Working Lands**

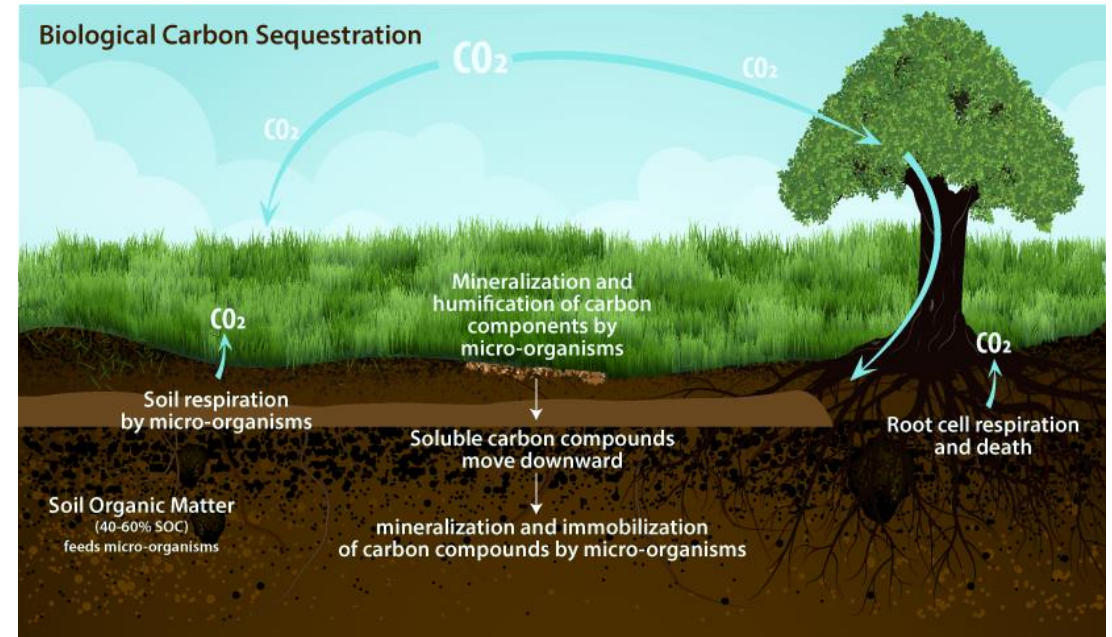
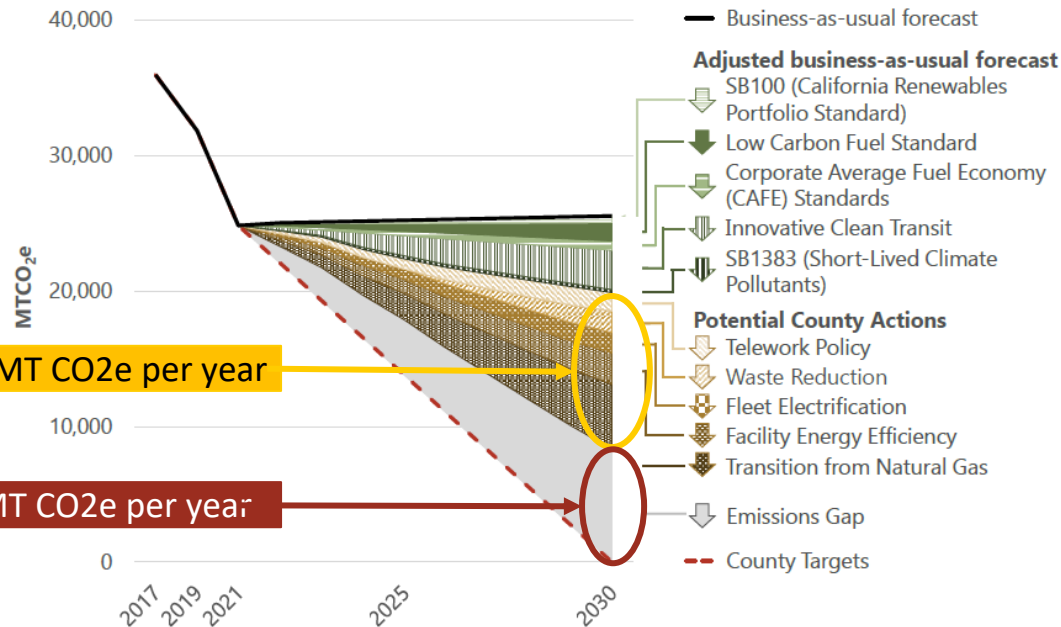


# Carbon Neutral: Emissions – Mitigation – Sequestration =

0

MITIGATION

SEQUESTRATION

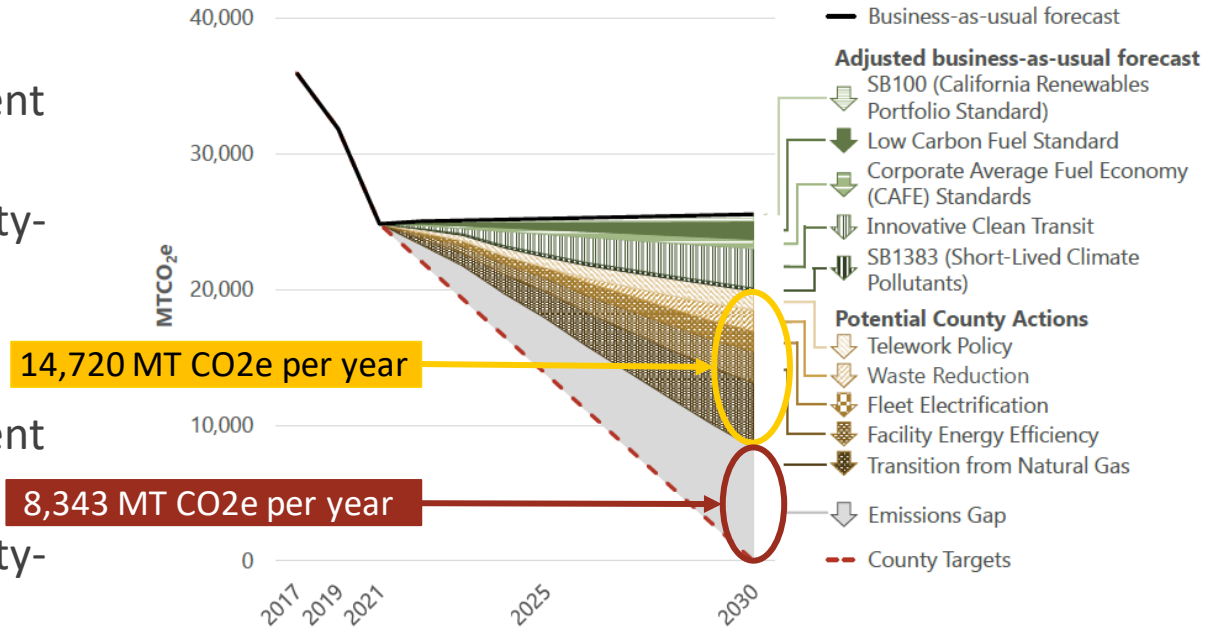


Source: CalRecycle

# Achieving Carbon Neutrality

## CARBON NEUTRALITY EXAMPLES WITH NATURE-BASED SOLUTIONS

- Store **8,343 MT CO<sub>2</sub>e** by completing:
  - **237** acres of climate resilient wildfire fuels treatment on County-owned lands
  - **2.33** acres of urban greening and forestry on County-owned lands
- Store **14,720 MT CO<sub>2</sub>e** by completing:
  - **418** acres of climate resilient wildfire fuels treatment on County-owned lands
  - **4.11** acres of urban greening and forestry on County-owned lands



**Unincorporated Community-wide Emissions = 827 MT CO<sub>2</sub>e/year**

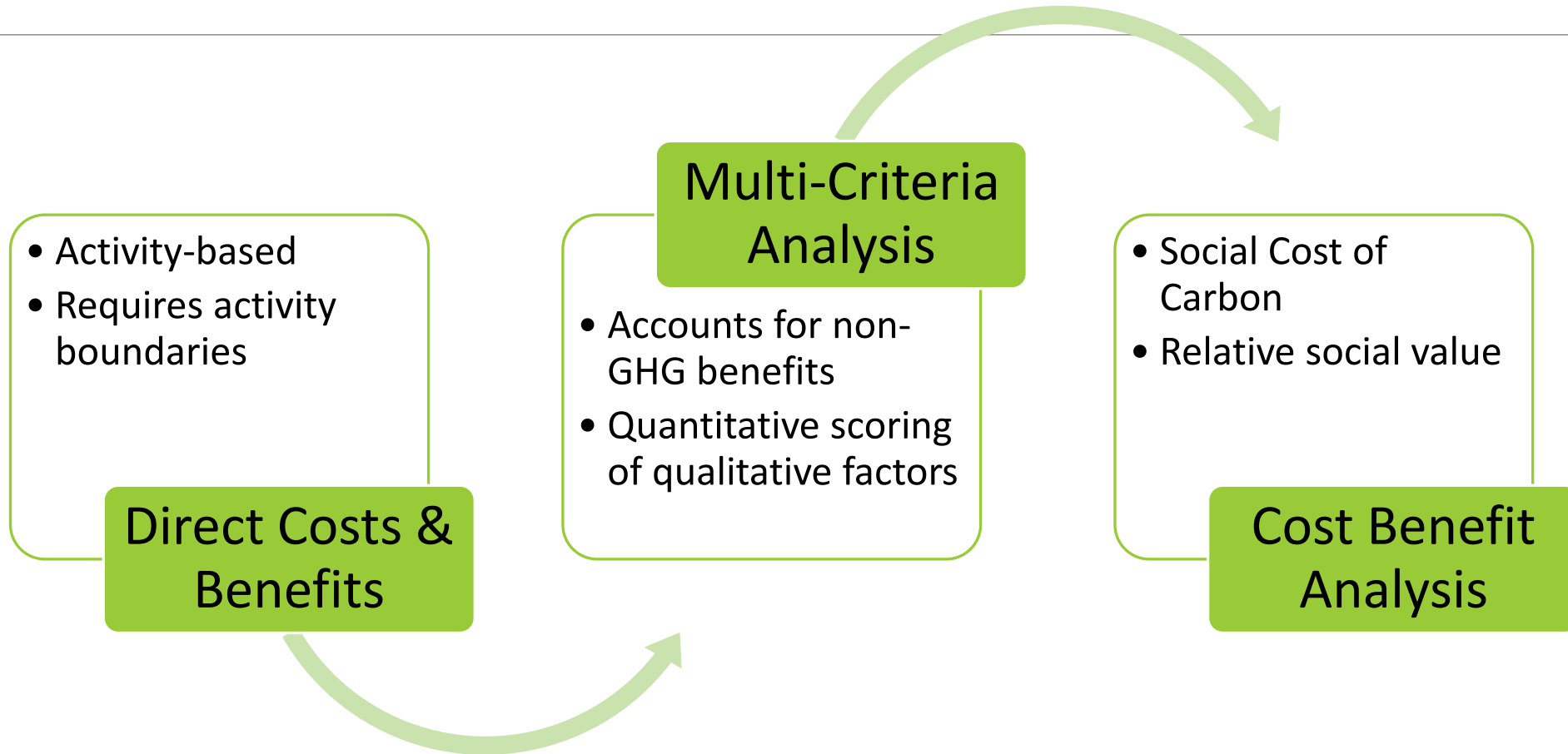
- 15,950 acres/year of wildfire fuels treatments
- 74 acres/year of urban greening & forestry

**Countywide Community Emissions = 3.1 million MT CO<sub>2</sub>e/year**

- 60,000 acres/year of wildfire fuels treatments
- 277 acres/year of urban greening & forestry

# Evaluating Costs & Benefits of Measures

---





The measures with the lowest cost per MT CO<sub>2</sub>e are energy measures that reduce electricity use, including:

Converting streetlighting to LED

Installing renewable energy in parks

Completing near-term energy upgrades at County facilities

The measures with the highest cost per MT CO<sub>2</sub>e are waste reduction measures such as reducing disposable food-ware use by County employees and at County events.

Measures using Nature-Based Solutions generally rank higher for overall community benefit based on Multi-Criteria Analysis.

Measures decarbonizing diesel engines have the highest net social cost, based on the social cost of carbon, but they are also required by state regulations.

## Costs & Benefits Findings

# Paying for Climate Resilience

Climate Resilience Grants & Incentives Awarded	
Grant/Incentive and Project	Award
IRA Renewable Energy & Storage Direct Payment Tax Credit (expected in 2026, based on Admin Center & Los Guillicos project schedule)	\$4,462,563
CPUC Self-Generation Incentive Program (reservation pending)	\$431,980
IRA Renewable Energy & Storage Direct Payment Tax Credit (expected in 2025, based on current Santa Rosa Veterans Building project schedule)	\$396,109
CPUC Self-Generation Incentive Program (reserved)	\$122,400
IRA Renewable Energy & Storage Direct Payment Tax Credit (2024, in process)	\$41,093
CalTrans Sustainable Transportation Planning Grant Program: Equitable EV Charging Plan for Sonoma County (2024)	\$247,000
US DOE Energy Efficiency and Conservation Block Grant/ Voucher Program: Fleet Electrification (2024)	\$233,790
Congressional Appropriation thru US HUD: Equitable Energy Resilience – EV Infrastructure and Green Jobs Training Project (2023-4)	\$791,200
US EPA Clean Water Act Section 302(J): Russian River Pathogen Planning Project (2024)	\$250,000
USDA NRCS Climate Smart Agriculture: Sonoma Marin Ag & County Climate Coalition (2023)	\$10,000,000
<b>Total</b>	<b>\$16,976,135</b>
<i>US FEMA Wildfire Resilient Sonoma County Grants</i>	<i>~ \$60 million</i>

Roughly \$17 million in grants & incentives secured

Funding strategy developed for 10 County Operations Measures + 1 Community Progress Measure

Novel Financing Concepts to explore

# Potential Funding & Financing

## UPCOMING GRANT OPPORTUNITIES

**FY 2024-25: 18 opportunities identified**

- 13 grant deadlines by December 31<sup>st</sup>
- 3 applications in development (evaluating others)
- 2 applications awaiting award decision

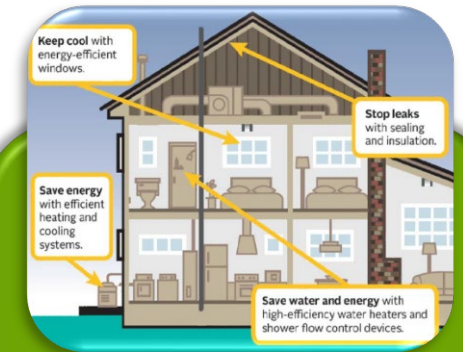
**FY 2025-26: 15 opportunities identified**

**FY 2026-27: 4 opportunities identified**

## FINANCING CONCEPTS FOR EXPLORATION



**Working Lands  
Carbon Mitigation  
Bank**



**Residential  
Retrofit Offset  
Reverse Auction**

# Funding Recommendations

# Near Term Measures & Community Engagement

## Goals:

- *No impact on General Fund*
- *Maximize leveraging of grant funding*
- *Modest investments catalyze larger progress*

The Climate Plan has 25 Near Term Measures:

- 6 measures have funding secured
- \$8 million in grant applications submitted or underway to electrify fleet vehicles, install fleet charging, and plan for sea level rise & river flooding
- Funding is recommended for 14 measures

Staff recommends \$2,266,300 in funding:

- \$1,297,256 in Climate Resilience Funds
- \$969,044 in Tribal Mitigation Funds

Funding would support:

- \$1,807,000 for 14 Near Term Measures
- \$459,300 to implement the Community Engagement Strategy

Funds would be budgeted with 1<sup>st</sup> Quarter Consolidated Budget Adjustments (anticipated October 22, 2024)

***[Link to Funding Tool](#)***

# Recommended Actions Today

---

- ❖ Approve the Climate Resilience Comprehensive Action Plan
- ❖ Approve recommended funding in the amount of \$2,266,300 to implement Near Term Measures & the Community Engagement Strategy