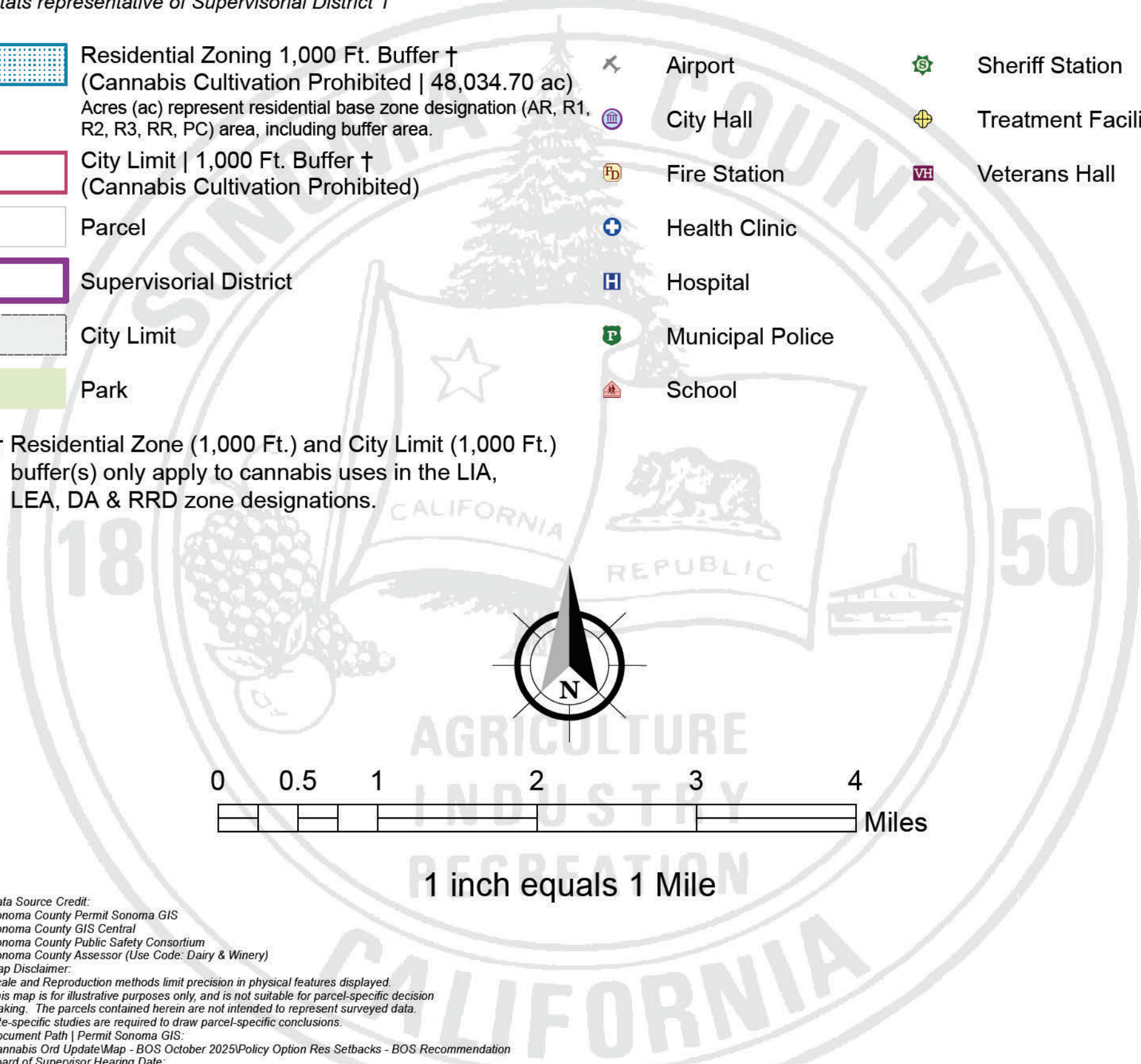


Supervisorial District 1
Cannabis Ordinance Update | Residential Land Use
Setbacks: Board of Supervisors Recommendation
October 28, 2025

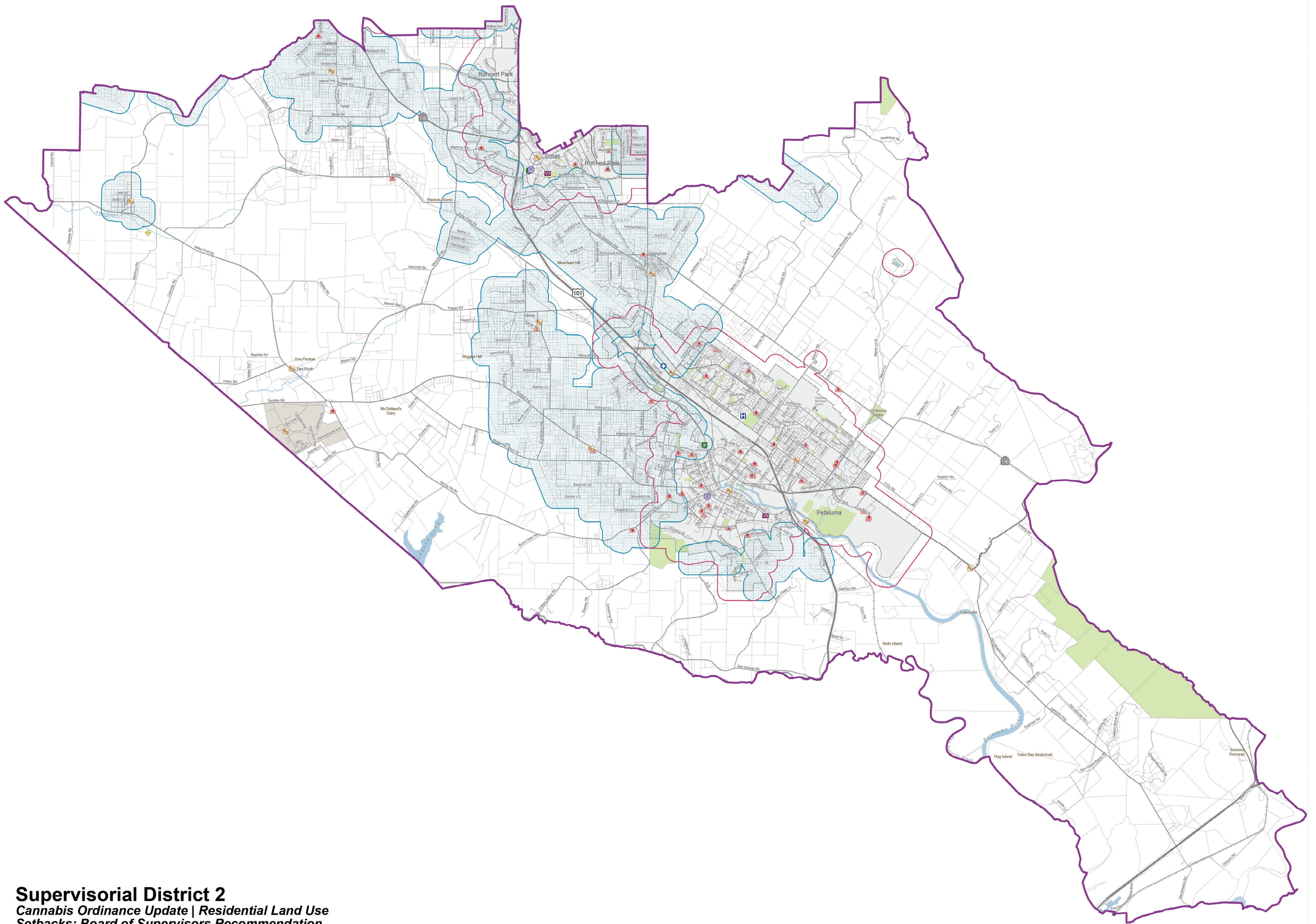
Stats representative of Supervisorial District 1

- Residential Zoning 1,000 Ft. Buffer † (Cannabis Cultivation Prohibited | 48,034.70 ac)
- Acres (ac) represent residential base zone designation (AR, R1, R2, R3, RR, PC) area, including buffer area.
- City Limit | 1,000 Ft. Buffer † (Cannabis Cultivation Prohibited)
- Parcel
- Supervisorial District
- City Limit
- Park
- Airport
- City Hall
- Fire Station
- Health Clinic
- Hospital
- Municipal Police
- School
- Sheriff Station
- Treatment Facility
- Veterans Hall

† Residential Zone (1,000 Ft.) and City Limit (1,000 Ft.) buffer(s) only apply to cannabis uses in the LIA, LEA, DA & RRD zone designations.



Data Source Credit:
 Sonoma County Parcel Ownership GIS
 Sonoma County GIS Central
 Sonoma County Public Safety Callcenter
 Sonoma County Assessor (Site Code: Dairy & Winery)
 Map Data:
 Source: Esri/Aerial Imagery and other sources as provided in physical format. Esri/Aerial
 This map is for illustrative purposes only, and is not suitable for parcel-specific decision
 making. The parcels contained herein are not intended to represent any specific data.
 Site-specific details are required to allow parcel-specific conclusions.
 Document Path: /Public/Supervisorial Districts
 Cannabis Ordinance Update - Board of Supervisors Recommendation
 Board of Supervisors Meeting Date
 October 28, 2025



Supervisorial District 2

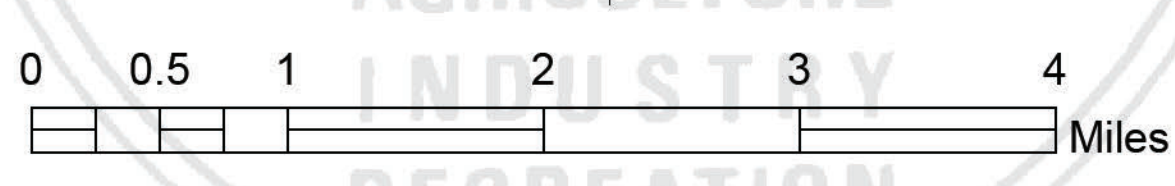
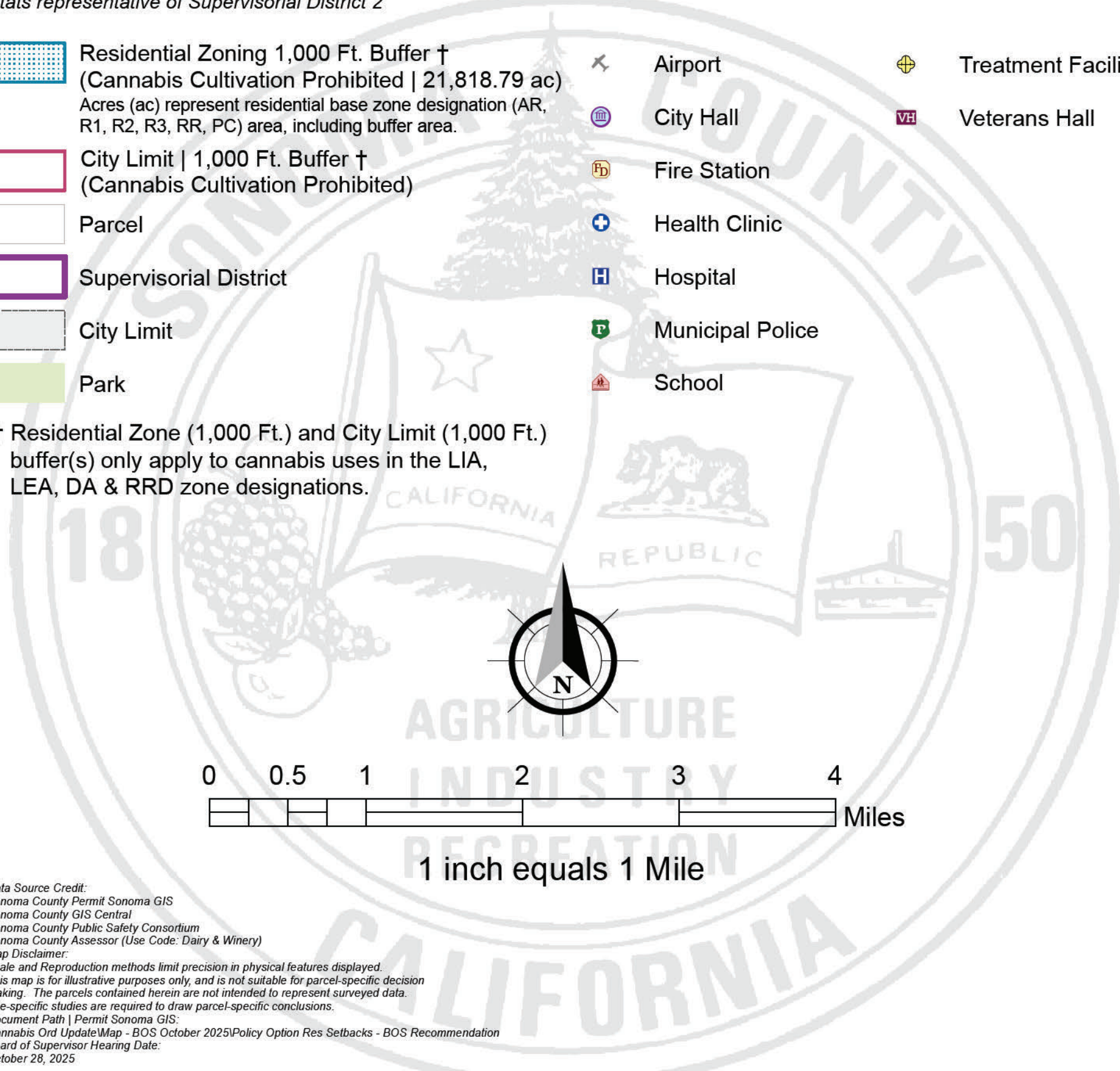
Cannabis Ordinance Update | Residential Land Use Setbacks: Board of Supervisors Recommendation

October 28, 2025

Stats representative of Supervisorial District 2

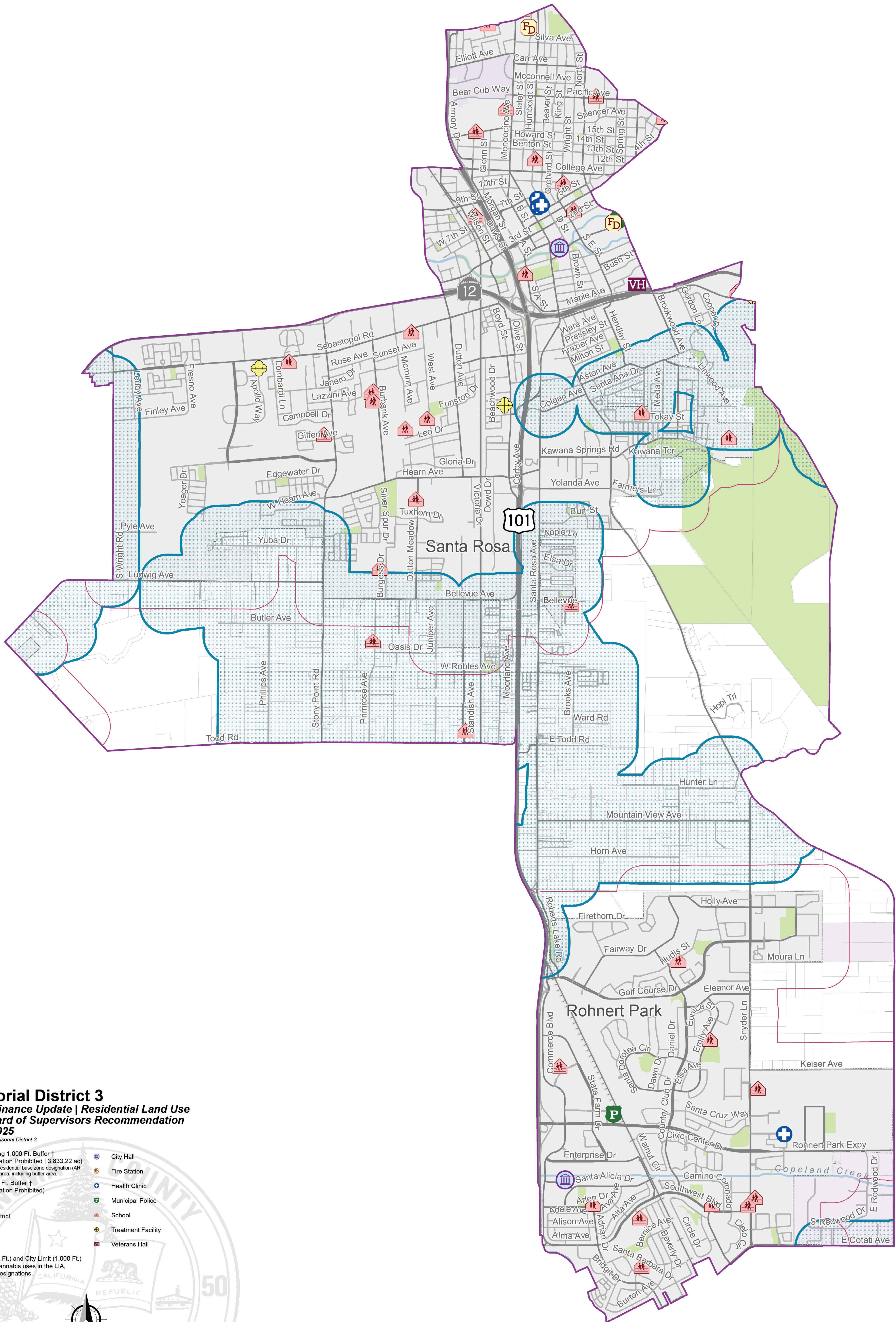
- | | | |
|---|------------------|--------------------|
| Residential Zoning 1,000 Ft. Buffer † (Cannabis Cultivation Prohibited 21,818.79 ac)
Acre (ac) represent residential base zone designation (AR, R1, R2, R3, RR, PC) area, including buffer area. | Airport | Treatment Facility |
| City Limit 1,000 Ft. Buffer † (Cannabis Cultivation Prohibited) | City Hall | Veterans Hall |
| Parcel | Fire Station | |
| Supervisorial District | Health Clinic | |
| City Limit | Hospital | |
| Park | Municipal Police | |
| | School | |

† Residential Zone (1,000 Ft.) and City Limit (1,000 Ft.) buffer(s) only apply to cannabis uses in the LIA, LEA, DA & RRD zone designations.



1 inch equals 1 Mile

Data Source Credit:
 Sonoma County Assessor's Office
 Sonoma County GIS Center
 Sonoma County Public Safety Commission
 Sonoma County Assessor (Map Code: Day & Wiley)
 Map Data:
 Scale and Reproduction methods limit precision or physical features displayed.
 This map is for distribution purposes only and is not suitable for general planning or decision making. For specific information, please contact the Sonoma County Assessor's Office.
 Site-specific studies are required to draw parcel-specific conclusions.
 Document Title: Cannabis Ordinance Update - BOC October 2025 Policy Risk Setbacks - BOC Recommendation
 Board of Supervisor Meeting Date:
 October 28, 2025

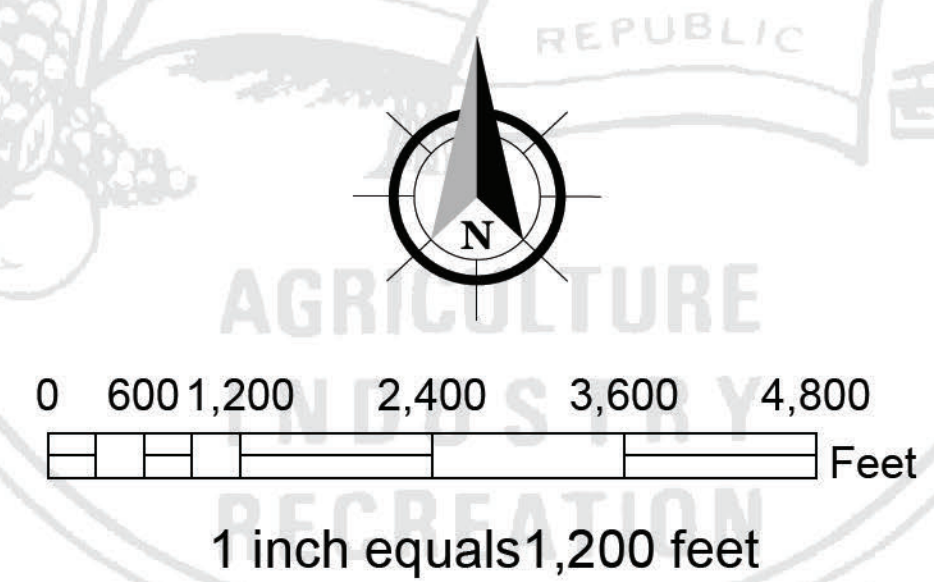


Supervisory District 3 Cannabis Ordinance Update | Residential Land Use Setbacks: Board of Supervisors Recommendation October 28, 2025

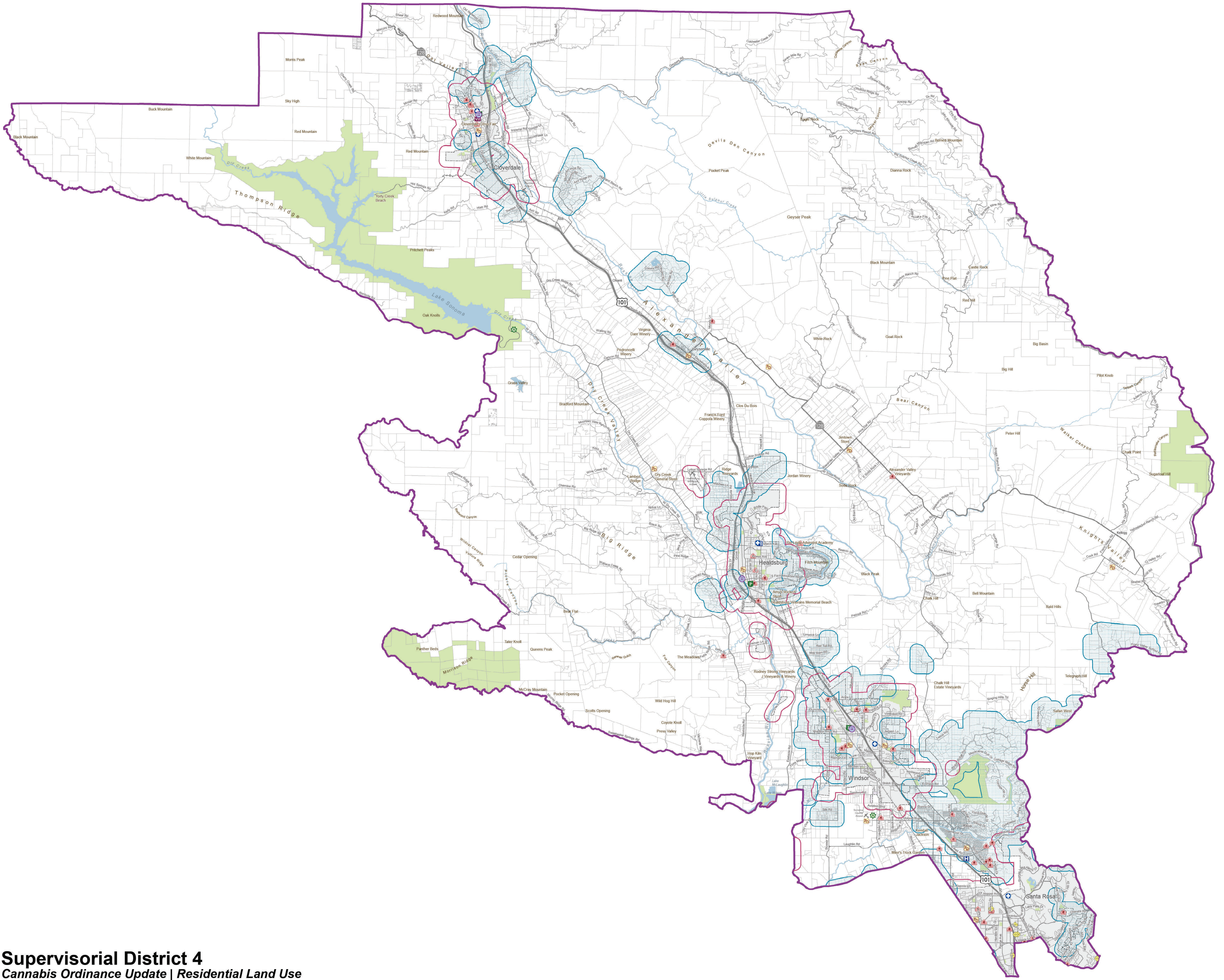
Stats representative of Supervisory District 3

- Residential Zoning 1,000 Ft. Buffer †
(Cannabis Cultivation Prohibited | 3,833.22 ac)
Acres (ac) represent residential base zone designation (AR, R1, R2, R3, RR, PC) area, including buffer area.
- City Limit | 1,000 Ft. Buffer †
(Cannabis Cultivation Prohibited)
- Parcel
- Supervisory District
- City Limit
- Park
- City Hall
- Fire Station
- Health Clinic
- Municipal Police
- School
- Treatment Facility
- Veterans Hall

† Residential Zone (1,000 Ft.) and City Limit (1,000 Ft.)
buffer(s) only apply to cannabis uses in the LIA,
LEA, DA & RRD zone designations.



Data Source Credit:
Sonoma County Aerial Services GIS
Sonoma County GIS Center
Sonoma County Public Safety Consortium
Sonoma County Assessor (Map Code: Day & Winery)
Map Data:
Scale and reproduction methods used precision or physical features displayed.
This map is for distribution purposes only and is not suitable for general planning or decision
making. The graphic content herein is not intended to represent any specific data.
Site-specific studies are required to draw parcel-specific conclusions.
Document Title: Parcel Cannabis Use
Document Date: Parcel Cannabis Use
Cannabis Use Update Map - BCS October 2025 Policy Update Risk Backstop - BCS Recommendation
Board of Supervisor Meeting Date
October 28, 2025

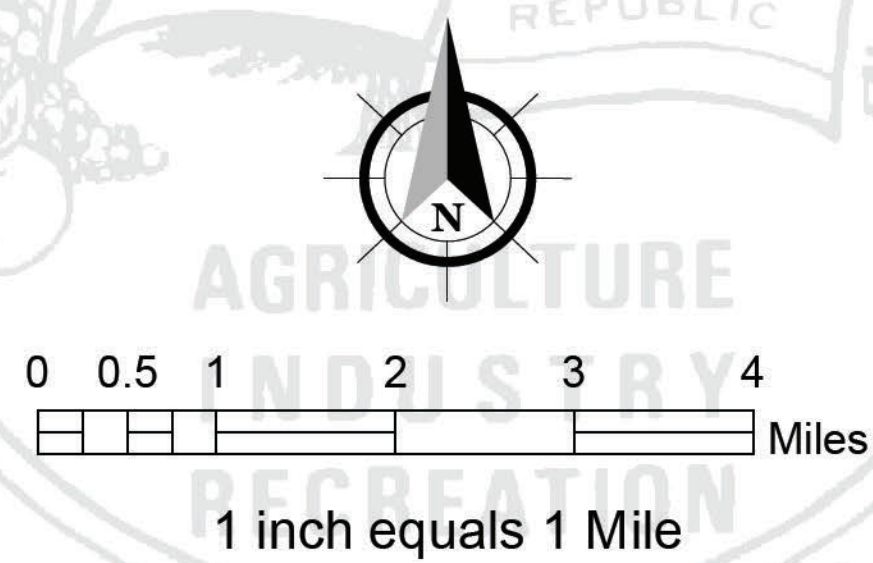


Supervisory District 4 Cannabis Ordinance Update | Residential Land Use Setbacks: Board of Supervisors Recommendation October 28, 2025

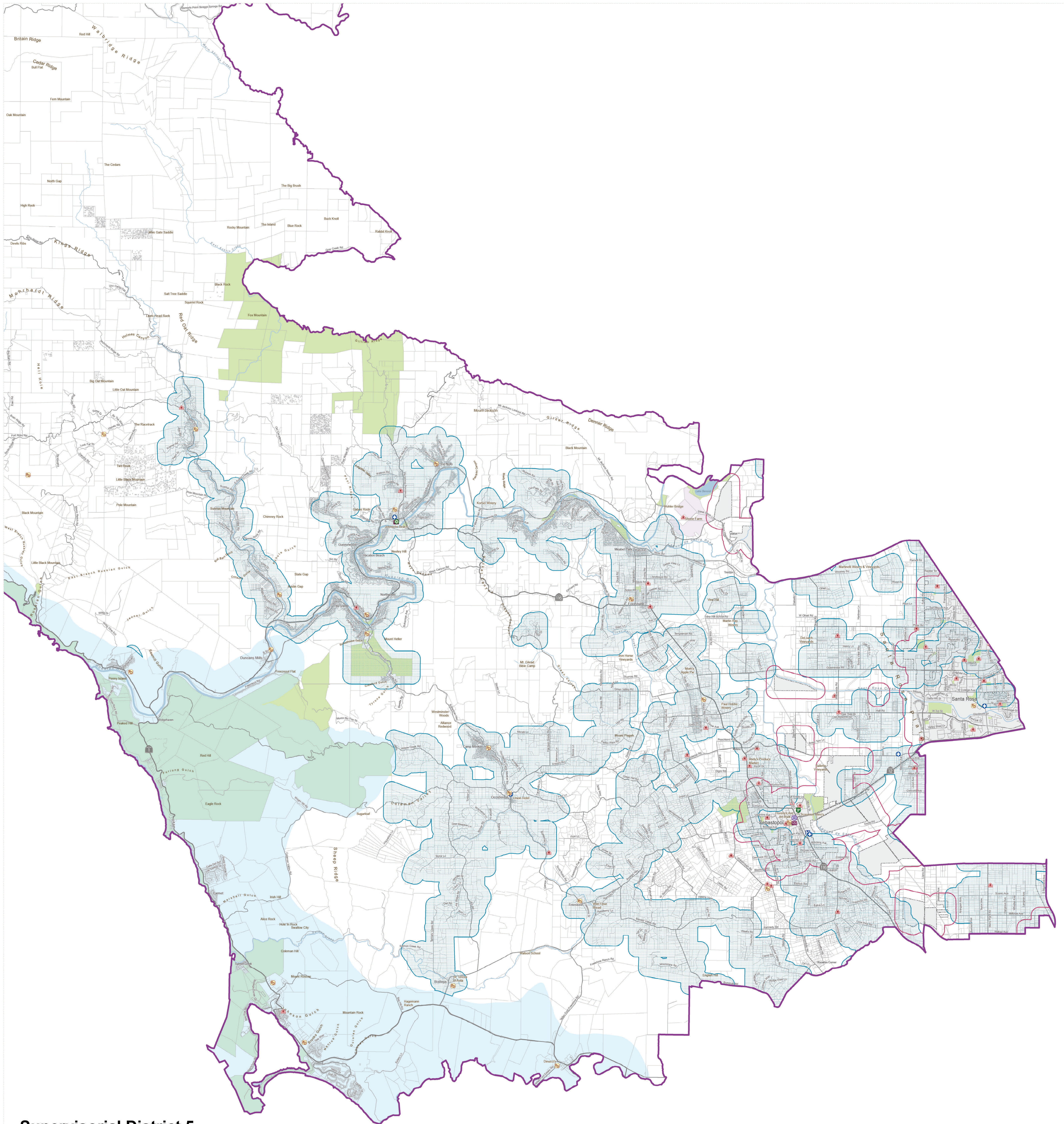
Stats representative of Supervisory District 4

- Residential Zoning 1,000 Ft. Buffer †
(Cannabis Cultivation Prohibited | 22,419.35 ac)
Acres (ac) represent residential base zone designation (AR, R1, R2, R3, RR, PC) area, including buffer area.
- City Limit | 1,000 Ft. Buffer †
(Cannabis Cultivation Prohibited)
- Parcel
- Supervisory District
- City Limit
- Park
- Airport
- City Hall
- County Seat
- Fire Station
- Health Clinic
- Hospital
- Municipal Police
- School
- Sheriff Station
- Treatment Facility
- Veterans Hall

† Residential Zone (1,000 Ft.) and City Limit (1,000 Ft.)
buffer(s) only apply to cannabis uses in the LIA,
LEA, DA & RRD zone designations.



Data Source Credit:
Sonoma County Parcel/Sonoma GIS
Sonoma County GIS Center
Sonoma County Public Safety/Commuter
Sonoma County Assessor (Use Code: Daily & Weekly)
Map Outlines
Scale and reproduction methods used are not intended to be used for any other purpose.
This map is for illustrative purposes only and is not intended to be used for any other purpose.
The project contained herein is not intended to be used for any other purpose.
Sonoma County GIS Center
Cannabis Ordinance Update Map - BIDS October 2025/Policy Option Res Setbacks - BIDS Recommendation
Board of Supervisor Meeting Date
October 28, 2025

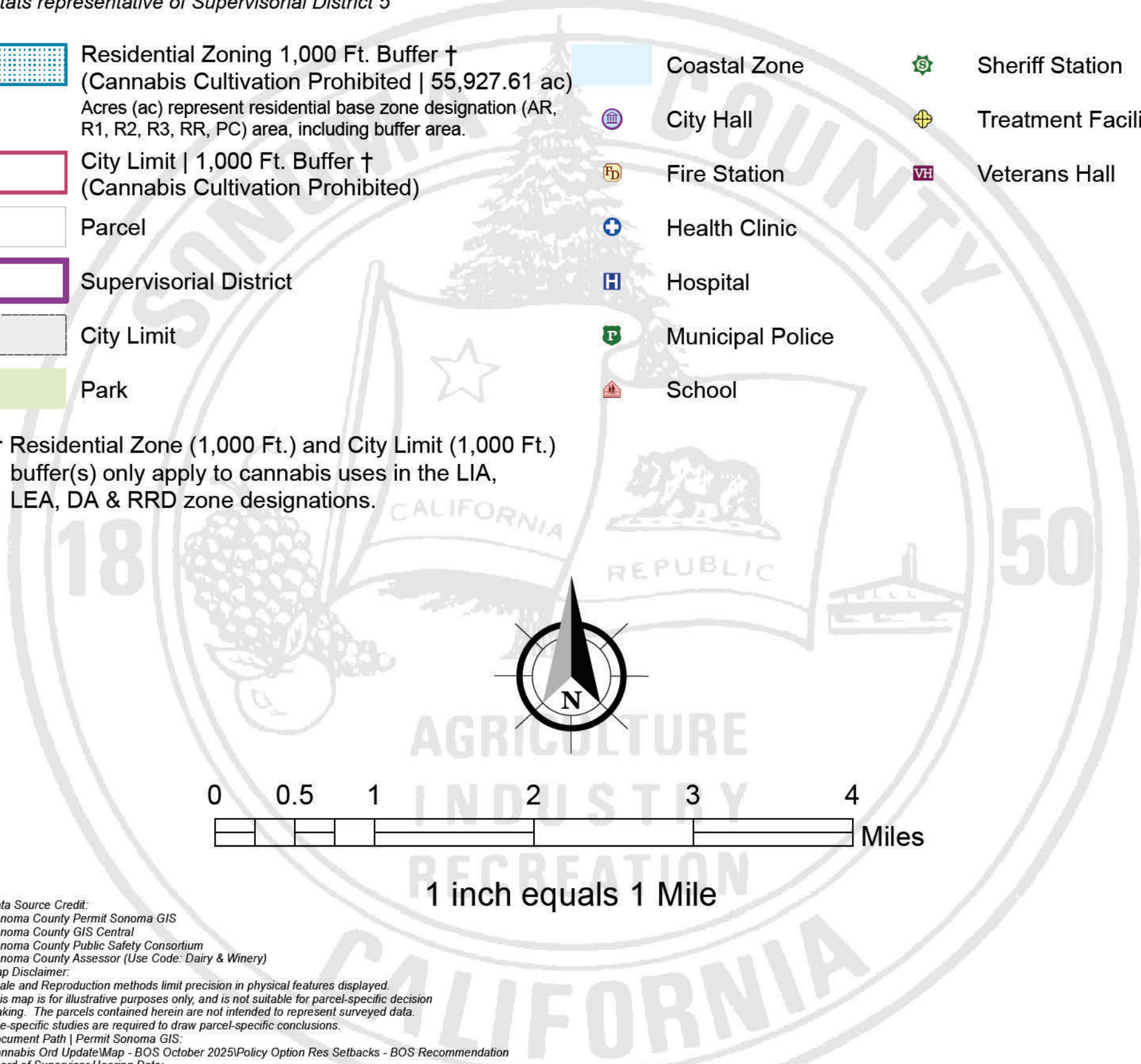


Supervisory District 5
Cannabis Ordinance Update | Residential Land Use
Setbacks: Board of Supervisors Recommendation
October 28, 2025

Stats representative of Supervisory District 5

- Residential Zoning 1,000 Ft. Buffer †
(Cannabis Cultivation Prohibited | 55,927.61 ac)
Acres (ac) represent residential base zone designation (AR, R1, R2, R3, RR, PC) area, including buffer area.
- City Limit | 1,000 Ft. Buffer †
(Cannabis Cultivation Prohibited)
- Parcel
- Supervisory District
- City Limit
- Park
- Coastal Zone
- City Hall
- Fire Station
- Health Clinic
- Hospital
- Municipal Police
- School
- Sheriff Station
- Treatment Facility
- Veterans Hall

† Residential Zone (1,000 Ft.) and City Limit (1,000 Ft.)
 buffer(s) only apply to cannabis uses in the LIA,
 LEA, DA & RRD zone designations.



Data Source Credit:
 Sonoma County Assessor's Office
 Sonoma County GIS Center
 Sonoma County Public Safety Consortium
 Sonoma County Assessor (Map Code: Gary & Wiley)
 Map Data
 Scale and Reproduction methods used precision or physical features displayed.
 This map is for distribution purposes only and is not suitable for general planning or
 zoning. The graphic content herein is not intended to represent any specific
 site-specific studies or to be used for any specific conclusions.
 Document Title: Cannabis Ordinance Update
 Board of Supervisor Meeting Date:
 October 28, 2025