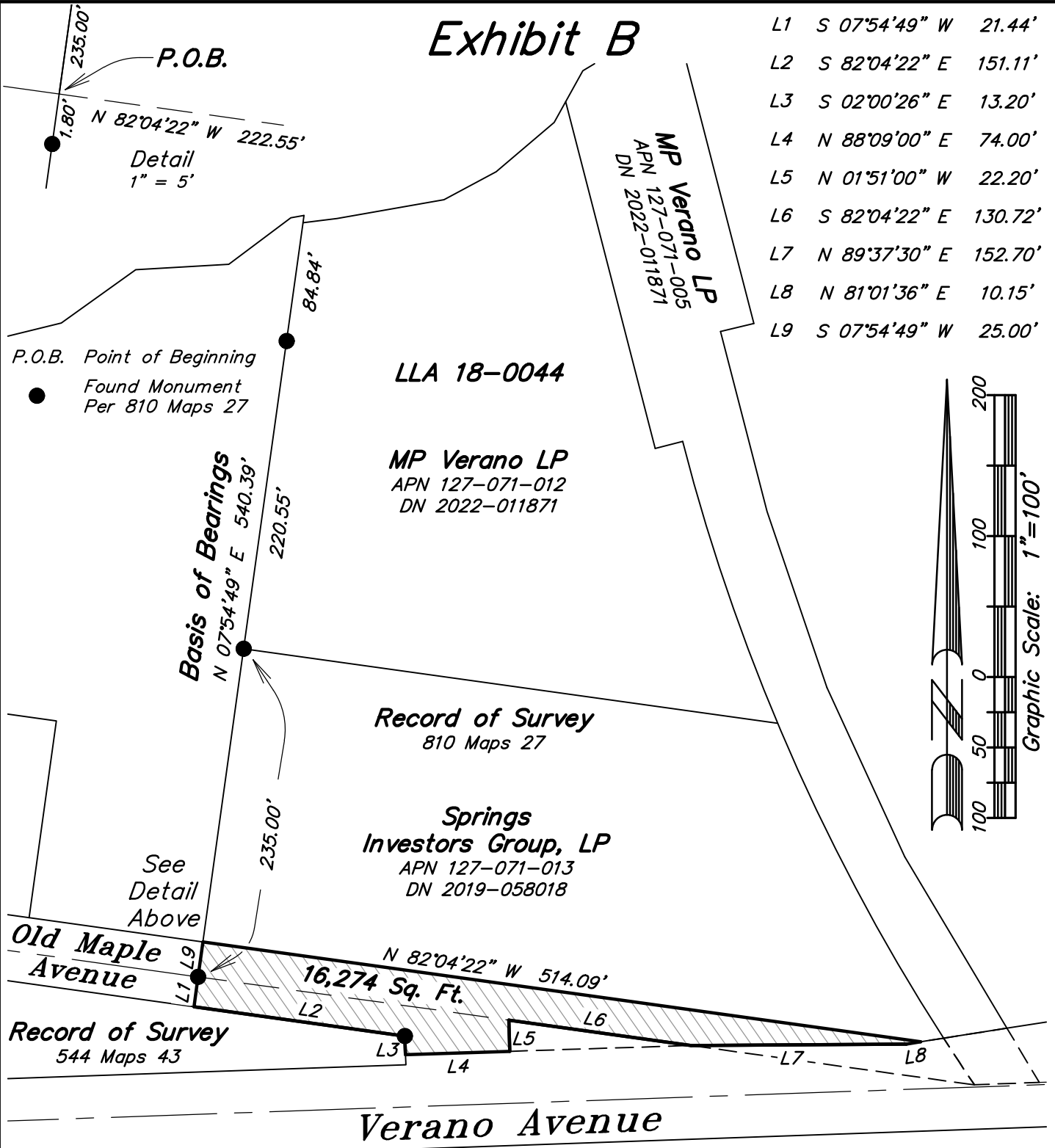
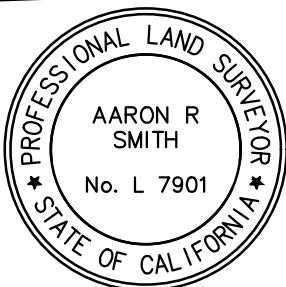


Exhibit B

L1	S 07°54'49" W	21.44'
L2	S 82°04'22" E	151.11'
L3	S 02°00'26" E	13.20'
L4	N 88°09'00" E	74.00'
L5	N 01°51'00" W	22.20'
L6	S 82°04'22" E	130.72'
L7	N 89°37'30" E	152.70'
L8	N 81°01'36" E	10.15'
L9	S 07°54'49" W	25.00'



File: T:\2018 PROJECTS\18273\dwg\Adobe-Survey\18273-RW-Vacation.dwg Time: Aug 31, 2022 - 2:55pm



Aaron R. Smith
 Aaron R. Smith, L.S. 7901

Right of Way Vacation
adobe associates, inc.
 civil engineering | land surveying | wastewater
 1220 N. Dutton, Ave., Santa Rosa, Ca. 95401
 P (707) 541-2300; F (707) 541-2301