

Estero Americano Coastal Preserve Mitigation Project Habitat Mitigation and Monitoring Plan

Addendum

Coastal Wetlands/Waters of the U.S. and State, and Riparian Habitat Creation for the 1J960, 1K730, and 1K750 Projects

Introduction

This addendum provides clarification regarding the inclusion of efforts to satisfy offsite mitigation requirements for permanent impacts for several Caltrans projects at the Estero Americano Coastal Preserve, and responds to a California Coastal Commission (CCC) comment on the wetland, waters, and riparian mitigation plans provided for the Marin State Route 1 Capital Preventive Maintenance Project (1J960), the Sonoma State Route 1 Drainage System Restoration Project (1K750), and the Sonoma State Route 1 Culvert Rehabilitation Project (1K730) at the Estero Americano Coastal Preserve. The wetlands, waters, and riparian offsite mitigation elements for these three projects, are combined with the broader and separate mitigation effort for the Estero Americano Creek Bridge Replacement Project (20950) on State Route (SR) 1 at the Estero Americano Coastal Preserve. The Estero Americano Creek Bridge Replacement Project mitigation, and the 1J960, 1K750, and 1K730, mitigation efforts, are described in the Estero Americano Coastal Preserve Mitigation Project Mitigation Habitat Mitigation and Monitoring Plan (Estero Americano Coastal Preserve HMMP) (WRA 2024). These four mitigation efforts for permanent impacts are located on the Estero Americano Coastal Preserve property with their own discrete mitigation locations and will be completed according to the methods, designs, monitoring, and reporting outlined in the Estero Americano Preserve HMMP and this addendum provides details on these separate projects, their regulatory requirements, and individual permit requirements. Attachment 1 provides a summary table of the offsite mitigation requirements.

Caltrans received comments on the Mitigation and Monitoring Plans for the transportation projects with mitigation being completed at the Estero Americano Coastal Preserve that requested clarification on whether the offsite mitigation taking place was creation of new habitat or enhancement of existing habitats. This addendum clarifies that the wetland, waters, and riparian mitigation for the 1J960, 1K750, and 1K730 Projects will be created at the Estero Americano Coastal Preserve in existing uplands adjacent to natural seeps and will result in a net gain in the aquatic environment. In the context of these Projects and the MMPs, the term “establishment” in the Estero Americano Coastal Preserve HMMP (WRA 2024) is synonymous

with creation. The steps that will be undertaken to create the wetlands, waters, and riparian features within the Preserve as mitigation for impacts associated with these Projects are summarized in the following subsections and the Estero Americano Preserve HMMP (WRA 2024).

Summary of Coastal Wetlands/Waters of the U.S. and State, and Riparian Habitat Creation for the 1J960 Project

Caltrans is proposing to construct the Capital Preventive Maintenance (CAPM) Project on State Route (SR) 1 from Post Mile (PM) 22.8 to PM 33.0 and PM 45.0 to PM 50.5 in Marin County, California. The Project proposes to repair two non-continuous segments of a 30-mile stretch of SR 1. Segment 1 (PM 22.8 to PM 33.0) spans from near Five Brooks to north of Point Reyes Station in unincorporated Marin County. Segment 2 (PM 45.0 to PM 50.5) spans from the town of Tomales to the Marin-Sonoma County line. This project has received the following permits that require compensatory mitigation: CCC CDP No. 2-23-0300, CDFW MAN-28532-R3, and RWQCB SB23021IN.

As described in the Estero Americano Coastal Preserve HMMP, willow riparian habitat will be planted in an upland area along a drainage that supports intermittent subsurface and shallow surface seep hydrology for the 1J960 Project (Attachment 2, Figure 1). A total of 0.0632 acre of coastal wetlands/waters of the U.S. and State as well as 0.32-acre riparian habitat will be created at this upland drainage within the Estero Americano Coastal Preserve specifically for the 1J960 Project (Table 1-1). The drainage slopes will be laid back to broaden this feature and reduce the elevation to allow subsurface flows and shallow seeps present at the site to intercept these water sources and spread into a larger, flatter area. This will allow creation of 0.032 acre of willow riparian habitat at the formerly upland edges next to the drainage. Native riparian shrubs and trees will be planted or installed include California blackberry (*Rubus ursinus*), salmonberry (*Rubus spectabilis*), common horsetail (*Equisetum arvense*), sword fern (*Polystichum munitum*), California rose (*Rosa californica*), arroyo willow (*Salix lasiolepis*), and Sitka willow (*Salix sitchensis*). As described in Table 3 of the Estero Americano Coastal Preserve HMMP (WRA 2024), these species will be installed as field divisions, cuttings, plugs, or by seed.

A total of 0.0632 acre of coastal wetlands/waters of the U.S. and State will be created by removing erosional upland areas and grading uplands to a lower elevation to intercept shallow groundwater and support wetlands. Wetlands will be created in areas that were formerly uplands. Table 4 of the Estero Americano Coastal Preserve HMMP (WRA 2024) lists the plant species that will be installed as field divisions, cuttings, plugs, or by seed to support the wetland creation. These wetland plant species include Baltic rush (*Juncus balticus* ssp. *ater*), brown-headed rush

(*Juncus phaeocephalus*), Pacific rush (*Juncus effusus* ssp. *pacificus*), spreading rush (*Juncus patens*), Coastal tufted hair grass (*Deschampsia cespitosa* ssp. *holciformis*), California oatgrass (*Danthonia californica*), and meadow barley (*Hordeum brachyantherum*).

Table 1-1. Amount of Coastal Wetlands/Waters of the U.S. and State, and Riparian Habitat Mitigation to be Created at the Estero Americano Coastal Preserve for the 1J960 Project

Impact Type	Mitigation Required for 1J960 (acre) (Includes 4:1 ratio)
Coastal Wetland waters of the U.S. (3-parameter)	0.0516
CCC Wetlands (1-parameter)	0.0016
Other Waters of the U.S.	0.0100
Total Wetlands and Other Waters	0.0632
Riparian Habitat	0.032
Total Riparian Habitat	0.032

Summary of Coastal Wetlands/Waters of the U.S. and State and Riparian Habitat Creation for the 1K750 Project

Sonoma State Route 1 Drainage System Restoration Project along State Route (SR) 1 in Sonoma County, California, from Post Mile (PM) 41.2 to PM 54.6. The Project will remove and replace existing damaged or failed culverts, or install a new culvert, at 27 locations between Miller Creek and approximately 0.5 mile south of Shell Beach. This project has received the following permits that require compensatory mitigation: CCC CDP No. 2-23-0300, CDFW SON-27455-R3, and RWQCB 1B22020WNSO.

The location of coastal wetlands/waters of the U.S. and State and riparian willow habitat creation is shown on Figure 2. The amount of coastal wetlands/waters of the U.S. and State and riparian habitat to be created within the Estero Americano Coastal Preserve for the 1K750 Project is listed in Table 1-2. For the 1K750 Project, 0.020 acre of willow riparian habitat will be planted in uplands along the drainage that supports intermittent hydrology (Figure 2). The drainage slopes will be graded to lower the elevation and intercept subsurface hydrology and shallow surface seeps and widen this feature. Once willows and other native species are planted, riparian habitat will be created within the formerly upland portions of this drainage. Species to be planted include California blackberry, salmonberry, common horsetail, sword fern, California rose, arroyo willow, and Sitka willow.

A total of 0.056 acre of coastal wetlands/waters of the U.S. and State will be created in areas that were formerly uplands near the upper reaches of the Middle Tributary (Figure 2). Table 4 of the Estero Americano Coastal Preserve HMMP (WRA 2024) lists the plant species that will be installed as field divisions, cuttings, plugs, or by seed to support the creation of the wetlands. These wetland plant species include Baltic rush, brown-headed rush, Pacific rush, spreading rush, Coastal tufted hair grass, California oatgrass, and meadow barley.

Table 1-2. Amount of Coastal Wetlands/Waters of the U.S. and State, and Riparian Habitat Mitigation to be Created at the Estero Americano Coastal Preserve for the 1K750 Project

Impact Type	Mitigation Required for 1K750 (acre) (includes 4:1 ratio)
Wetland waters of the U.S. (3-parameter)	-
CCC Wetlands (1-parameter)	<0.001
Other Waters of the U.S.	0.056
Total Wetlands and Other Waters	0.056
Riparian Habitat	0.020
Total Riparian	0.020

Summary of Waters of the U.S. and State Creation for the 1K730 Project

The Sonoma 1 Culvert Rehabilitation Project is located along State route (SR) 1 in Sonoma County, California from Post Mile (PM) 30.8 to PM 40.6 between Mill Gulch and 0.5 mile south of Miller Creek (Exhibit A, Appendix A). This project has received the following permits that require compensatory mitigation: CCC CDP No. CPH22-0002 and EPIMS-SON-25567-R

A total of 0.008 acre of waters of the U.S. and State will be created by removing erosional upland areas and grading uplands to a lower elevation to intercept shallow groundwater. Wetlands will be created in areas that were formerly uplands (Table 1-3). Table 4 of the Estero Americano Coastal Preserve HMMP (WRA 2024) lists the plant species that will be installed as field divisions, cuttings, plugs, or by seed to create the wetlands. These species include Baltic rush, brown-headed rush, Pacific rush, spreading rush, Coastal tufted hair grass, California oatgrass, and meadow barley. Creation of riparian vegetation is not required to offset impacts associated with the 1K730 Project.

Table 1-3. Amount of Waters of the U.S. and State Mitigation to be Created at the Estero Americano Coastal Preserve for the 1K730 Project

Impact Type	Mitigation Required for 1K730 (acre) (Includes 4:1 ratio)
Wetland waters of the U.S. (3-parameter)	-
CCC Wetlands (1-parameter)	-
Other Waters of the U.S.	0.008
Total Wetlands and Other Waters	0.008

Attachment 1 – Tables

Table A-1. Offsite Mitigation at the Estero Americano Coastal Preserve for 1J960, 1K730, and 1K750

Mitigation Type	Mitigation Required for 1J960 (acres)	Mitigation Required for 1K730 (acres)	Mitigation Required for 1K750 (acres)	Total Mitigation Required (acres)	Total Habitat Creation at the Estero Americano Coastal Preserve (acre)
Wetlands (i.e., three parameter wetlands)	0.0516	0	0	0.0516	--
Wetlands (i.e., one parameter wetlands)	0.0016	0	0.001	0.0026	--
Other waters	0.01	0.008	0.056	0.074	--
Total Waters Mitigation (coastal wetlands/waters of the U.S. and State)	0.0632	0.008	0.056	0.1272	0.97*
Total Riparian Habitat Mitigation	0.032	0	0.02	0.052	1.97

Notes:

A mitigation ratio of 4:1 to satisfy CCC requirements is included in the acreage presented in the table. Total Habitat Creation at the Estero Americano Coastal Preserve is inclusive of 1J960, 1K730, 1K750 and 20950. For further details on the 20950 offsite mitigation, see the Estero Americano Coastal Preserve HMMP.

* WRA HMMP identifies total waters as coastal wetlands/waters of the U.S. and State.

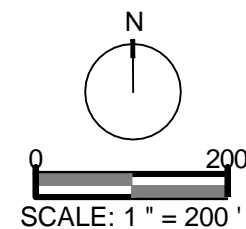
Attachment 2 – Figures



Figure 1 – Mitigation for the IJ960 Project

Estero Americano
Sonoma County, California

Path: L:\Acad 2000 Files\26000\26145\dwg\Caltrans.Add.Mitigation.Areas\Estero Caltrans Add Mit Areas Rev 03-30-24.dwg



Date: 03.30.24
Figure By: J. Strickland, ASLA

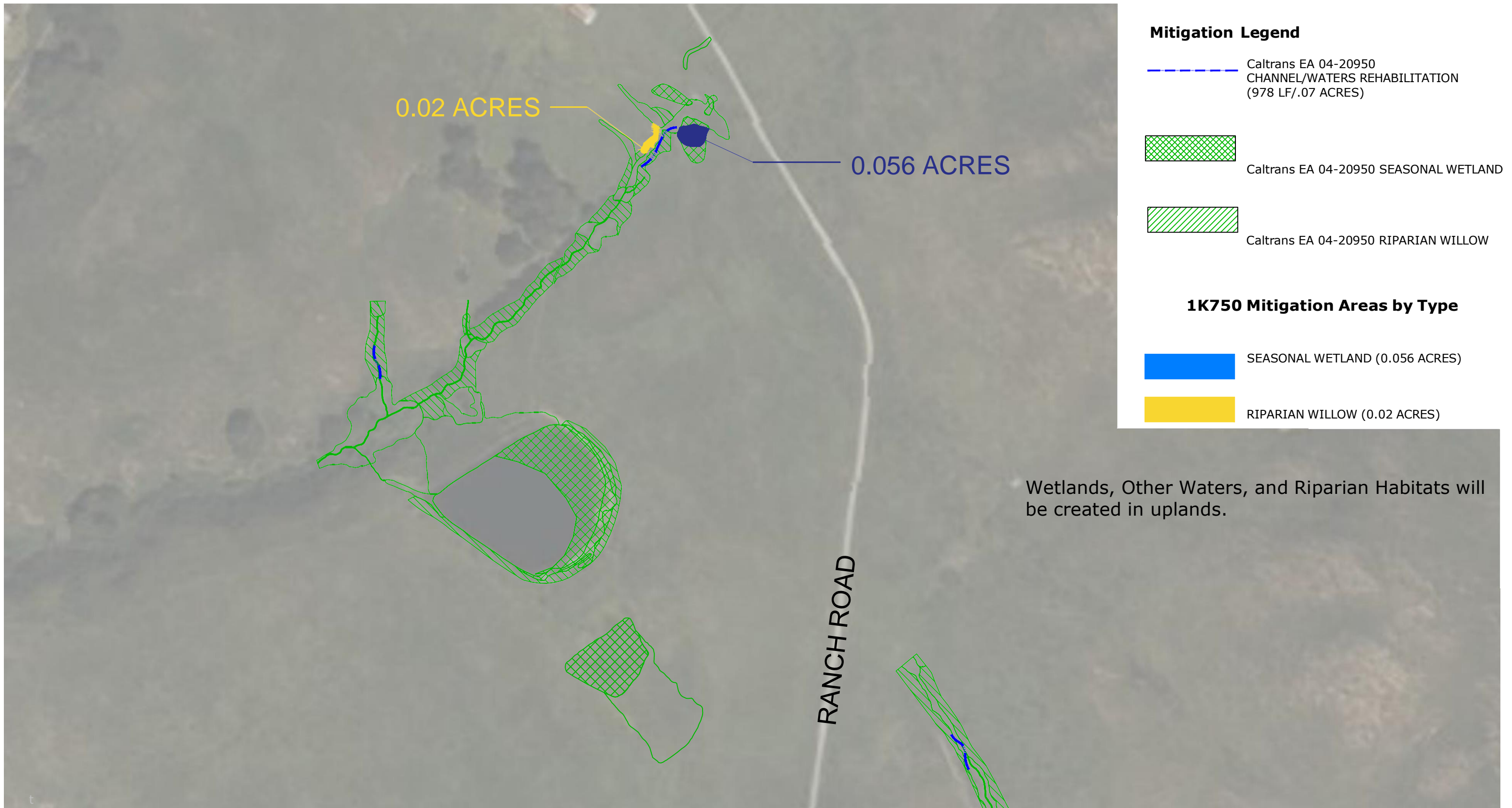
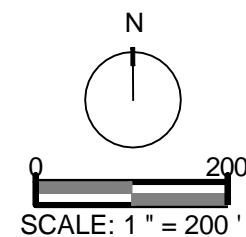


Figure 2. Mitigation for the IK750 Project

Estero Americano
Sonoma County, California

Path: L:\Acad 2000 Files\26000\26145\dwg\Caltrans.Add.Mitigation.Areas\Estero Caltrans Add Mit Areas Rev 03-30-24.dwg



Date: 03.30.24
Figure By: J. Strickland, ASLA

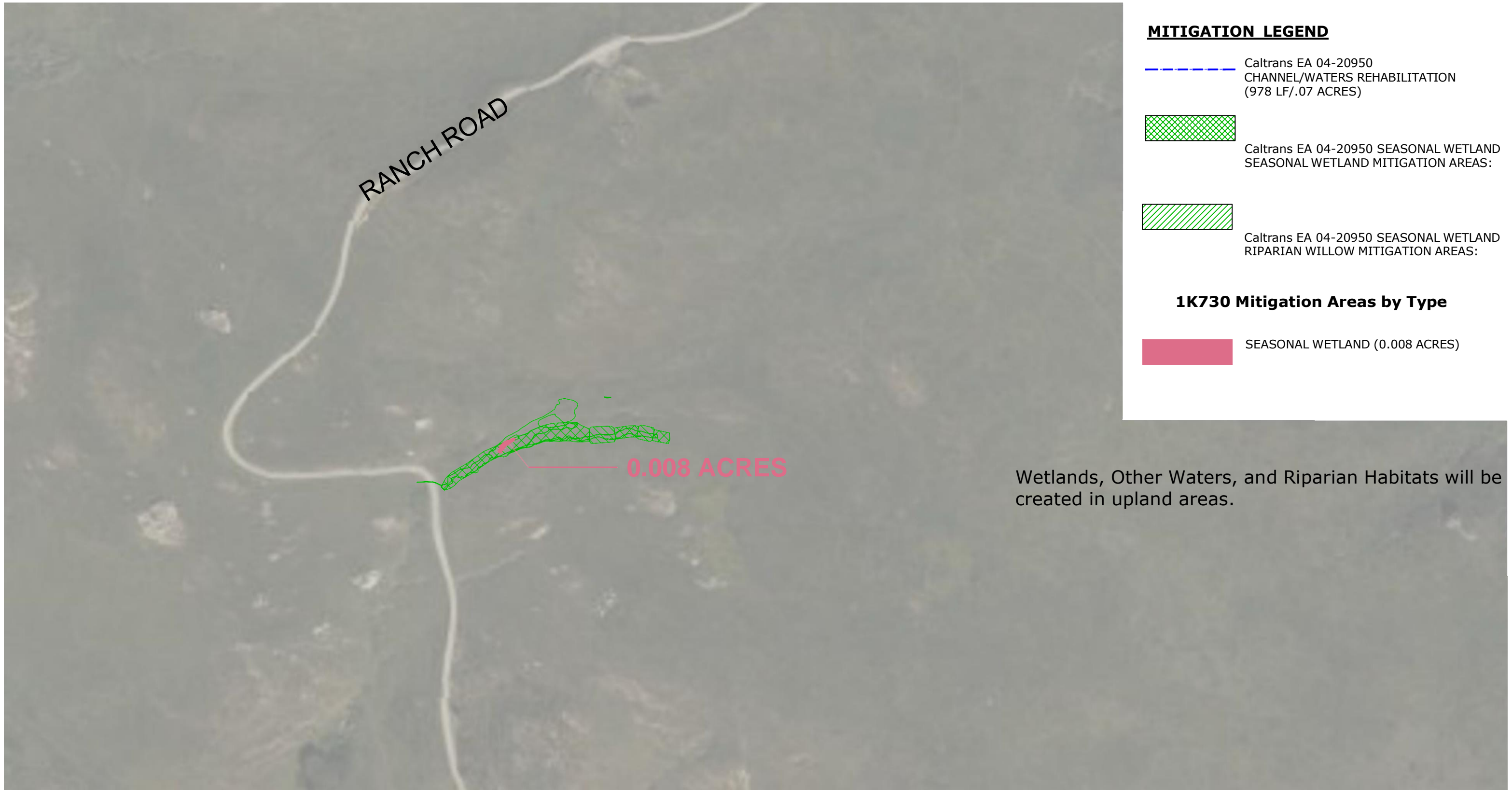
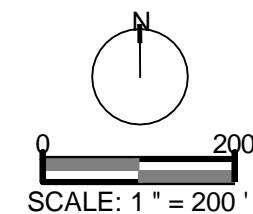


Figure 3. Mitigation for the IK730 Project

Estero Americano
Sonoma County, California

Path: L:\Acad 2000 Files\26000\26145\dwg\Caltrans.Add.Mitigation.Areas\Estero Caltrans Add Mit Areas Rev 03-30-24.dwg



Date: 03.30.24
Figure By: J. Strickland, ASLA