

Permit Sonoma

Sonoma County Community Wildfire Protection Plan (CWPP) 2023 Update





SONOMA COUNTY COMMUNITY WILDFIRE PROTECTION PLAN 2023 UPDATE

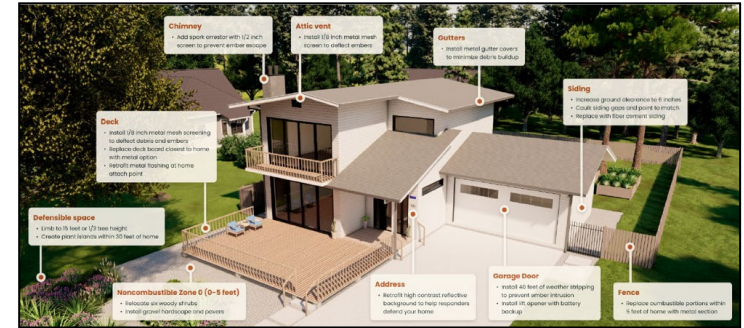
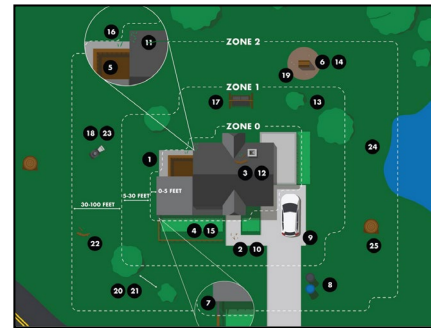
Sonoma County
Permit Sonoma Fire Prevention Division



CWPP Purpose

To bring residents, agencies, and organizations together to collaboratively:

- Identify community values, wildfire issues, and risk.
- Prioritize areas and strategies to reduce risk.



Defensible Space & Structure Hardening

Mechanical



Manual Treatment



Herbicides



Prescribed Herbivory

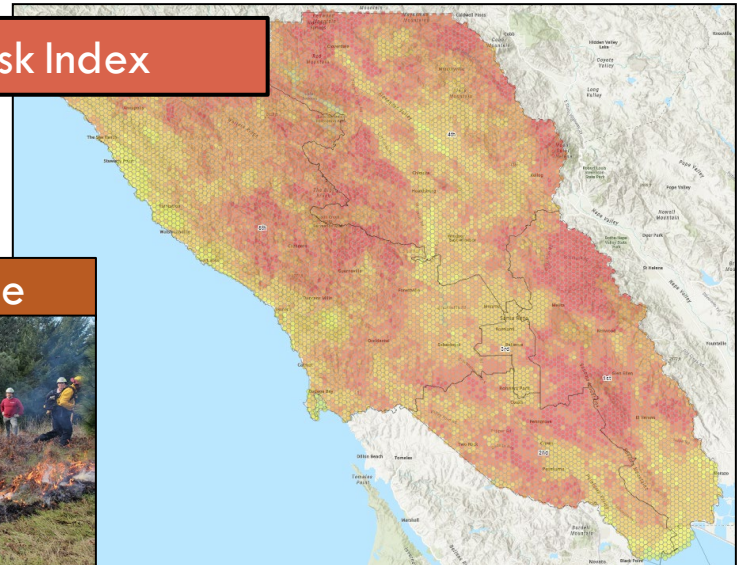


Prescribed Fire



Hazardous Fuels Reduction

Wildfire Risk Index



What a CWPP Does



CWPP

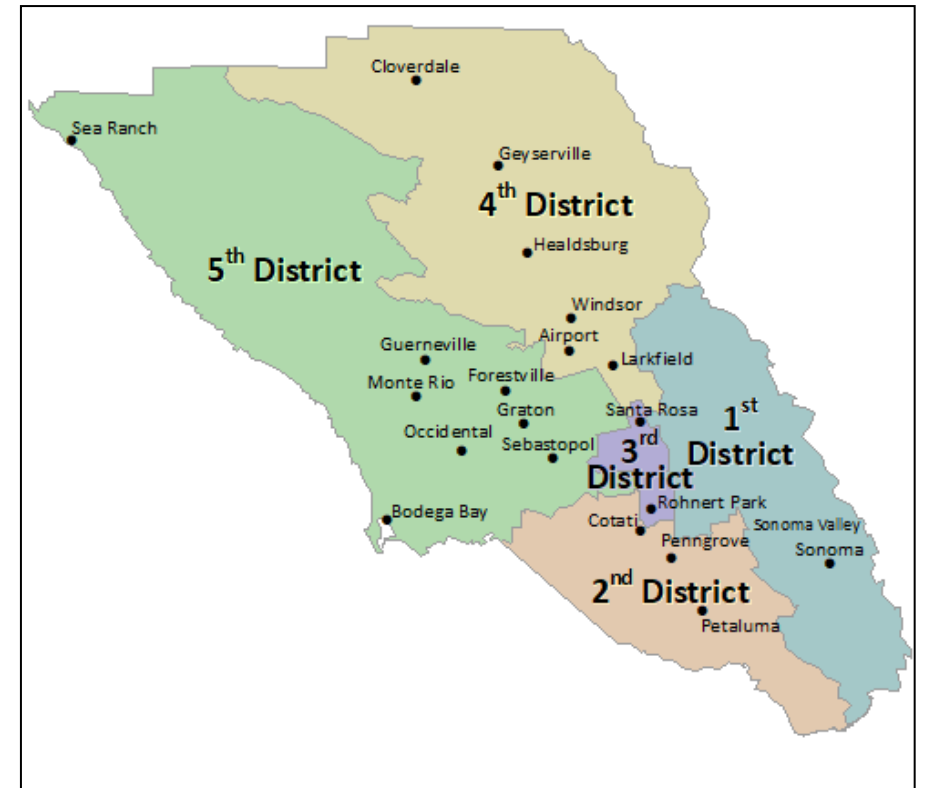
- Collaborate
- Prioritize
- Educate

Other Plans

- Evacuation Planning
- Development
- All Hazard Mitigation
- etc...

2023 CWPP Update Process

- Steering Committee and agency input
- Community Workshops in all districts
 - ▣ Community Values and Risks
- CWPP Draft 1 created
- Community Review Meetings
- Draft 2 created
- Community Review Meetings
- Final Draft



Comments & Revision Process

- 200+ comments from the public and agencies (Drafts 1 and 2).
- All comments reviewed
- Generally comments involved:
 - ▣ Environmental concerns
 - ▣ Funding needs
 - ▣ Equity
 - ▣ Education
 - ▣ Implementation
 - ▣ The document itself



Welcome
Bienvenidos

Community Wildfire Protection Plan (CWPP)
Public Review Meeting


Plan Comunitario de Protección Frente a
los Incendios Forestales (CWPP)
Taller de la revisión pública
January 27th, 2022



permit
SONOMA

2023 Sonoma County CWPP

CWPP Document



**SONOMA COUNTY
COMMUNITY WILDFIRE
PROTECTION PLAN
2023 UPDATE**

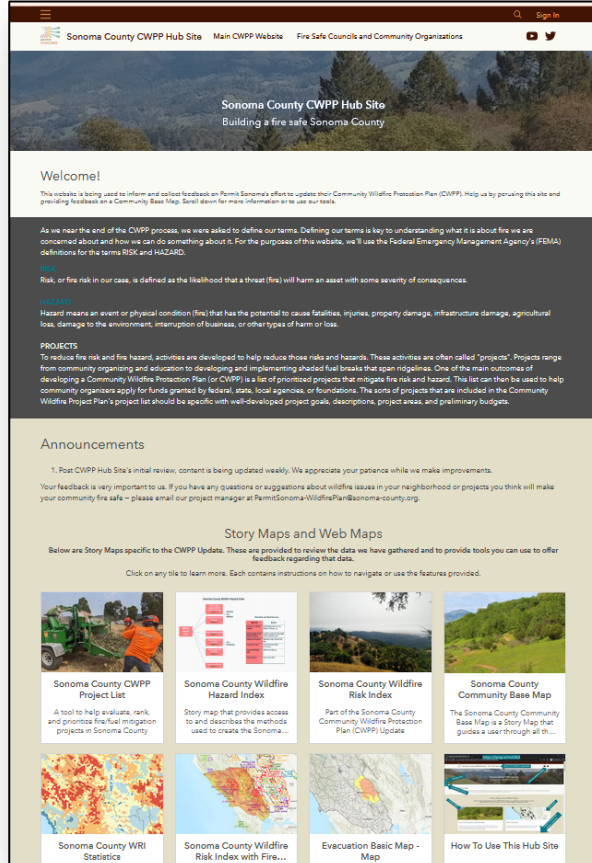
Sonoma County
Permit Sonoma Fire Prevention Division

Agreement Date: [insert date]
Document modification date: 02/06/2023
<https://sonoma-county-cwpp-hub-site-sonomacounty.hub.arcgis.com/>

Sonoma County Community Wildfire Protection Plan 2023 Update



CWPP Hub Site & Project Entry Portal



Sonoma County CWPP Hub Site Main CWPP Website Fire Safe Councils and Community Organizations

Sonoma County CWPP Hub Site
Building a fire safe Sonoma County

Welcome!

As we near the end of the CWPP process, we were asked to define our terms. Defining our terms is key to understanding what it is about fire we are concerned about and how we can do something about it. For the purposes of this website, we'll use the Federal Emergency Management Agency's (FEMA) definitions for the terms RISK and HAZARD.

Risk, or fire risk in our case, is defined as the likelihood that a threat (fire) will harm an asset with some severity of consequences.

Hazard means an event or physical condition (fire) that has the potential to cause fatalities, injuries, property damage, infrastructure damage, agricultural loss, damage to the environment, interruption of business, or other types of harm or loss.

PROJECTS
To reduce fire risk and fire hazard, activities are developed to help reduce those risks and hazards. These activities are often called "projects". Projects range from community organizing and education to developing and implementing shaded fuel breaks that span ridgelines. One of the main outcomes of developing a Community Wildfire Protection Plan (or CWPP) is a list of prioritized projects that mitigate fire risk and hazard. This list can then be used to help community organizers apply for funds granted by federal, state, local agencies, or foundations. The sorts of projects that are included in the Community Wildfire Protection Plan's project list should be specific with well-developed project goals, descriptions, project areas, and preliminary budgets.

Announcements

1. Post CWPP Hub Site's initial review, content is being updated weekly. We appreciate your patience while we make improvements. Your feedback is very important to us. If you have any questions or suggestions about wildfire issues in your neighborhood or projects you think will make your community fire safe - please email our project manager at PermitSonoma-WildfirePlan@sonoma-county.org.

Story Maps and Web Maps

Below are Story Maps specific to the CWPP Update. These are provided to review the data we have gathered and to provide tools you can use to offer feedback regarding that data.

Click on any tile to learn more. Each contains instructions on how to navigate or use the features provided.

Sonoma County CWPP Project List
A tool to help evaluate, rank, and prioritize fire fuel mitigation projects in Sonoma County.

Sonoma County Wildfire Hazard Index
Story map that provides access to and describes the methods used to create the Sonoma...

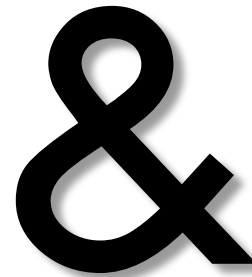
Sonoma County Wildfire Risk Index
Part of the Sonoma County Community Wildfire Protection Plan (CWPP) Update.

Sonoma County Community Base Map
The Sonoma County Community Base Map is a Story Map that guides a user through all th...

Sonoma County WRI Statistics
Sonoma County Wildfire Risk Index with Fire...

Evacuation Basic Map - Map

How To Use This Hub Site



What's in the CWPP?



Chapter 1 — About the CWPP

Chapter 2 — Overview of the County of Sonoma: General information about the County

Chapter 3 — Wildfire History, House Outward Risk Reduction Strategies, Preparedness

Chapter 4 — Wildland Ecosystems

Chapter 5 — Wildfire Hazard and Risk Assessments

Chapter 6 — Risk Reduction Priorities

Chapter 7 — Prioritization and Implementation

Chapter 8 — Appendices

Chapter 7: Prioritization & Implementation

- Alignment with Federal, State and Local plans
 - ▣ CAL FIRE Sonoma-Lake-Napa Unit (LNU)
Priorities, Insurance, County Plans, CLEE Report
- Prioritization
 1. Human life and safety
 2. Property (e.g. homes) and critical infrastructure
 3. Natural and cultural resources.
- CWPP Project Entry Portal, Project List and Map



About the Hub Site

Sonoma County CWPP Hub Site | Main CWPP Website | Fire Safe Councils and Community Organizations

Welcome to the Sonoma County Community Wildfire Protection Plan (CWPP) Hub Site!

This website is being used to inform and collect feedback on Sonoma County's effort to update their Community Wildfire Protection Plan (CWPP). Help us by perusing this site and providing feedback on a Community Base Map. Scroll down for more information or to use our tools.

About the Hub Site

The Hub Site is the active arm of the CWPP.

Here you can explore:

- The Project Entry Portal (PEP) where organizations, agencies and landowners can enter projects to be considered for the CWPP Project List.
- The Wildfire Risk Index Map created for the CWPP.
- The Project Planning Tool is an awesome mapping resource for project planning. Draw a project area and it will generate important data about risk, population, parcels and more.
- The CWPP Hub Site is the place that we can post new information about grant opportunities, links to new research, or other learning opportunities. Have something you'd like to post to the hub? Let us know!

About the Project Entry Portal and the CWPP Project List

To make our homes, communities, and ecosystems more resilient to wildfire, projects can be developed by agencies and/or organizations such as fire safe councils, CDFG or CERT groups, and neighborhood associations. Risk reduction projects might include a wide variety of activities, such as helping to create defensible space or harden homes, roadside vegetation management, developing and implementing shaded fuel breaks, community organizing, education, and planning.

The CWPP Project List provides a central location to list wildfire risk reduction projects. The CWPP Project Entry Portal is where projects can be entered to be screened for inclusion on the Project List. Having a project listed in a CWPP is a requirement for many grant programs, so it is important to get your project on the list if you are seeking funding. Additionally, projects entered in the portal will create a county-wide view of where projects have been developed, and where projects are needed so that overall trends and needs can be identified. Having the list in place will help to prioritize funding across the county.

The Hub Site is a work in progress, the "living document" of the CWPP. We expect to change and evolve over time. Your feedback is very important to us. If you have questions or suggestions, please email us at sonomacwpp@sonomacounty.gov.

Project Entry Portal and Mapping Resources

Click on the icons below to explore the maps and tools we have created for the CWPP, or to navigate to the Project Entry Portal.

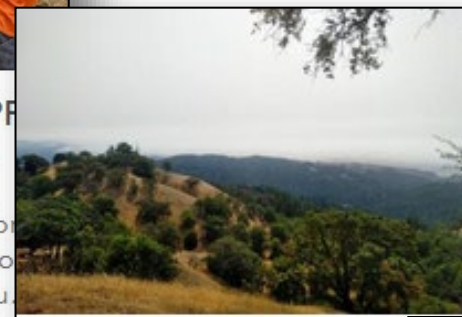
There is great information here! Each application has instructions on how to navigate or use the features in the app.

 <p>Sonoma County CWPP Project Entry Portal</p> <p>Enter Wildfire Risk Reduction Projects to be considered for inclusion on the Sonoma Cou...</p>	 <p>Project Planning Tool</p> <p>Draw prospective project areas in the Project Planning Tool application and be rewarde...</p>	 <p>Sonoma County Wildfire Hazard Index</p> <p>Story map that provides access to and describes the methods used to create the Sonoma...</p>	 <p>Sonoma County Wildfire Risk Index</p> <p>Part of the Sonoma County Community Wildfire Protection Plan (CWPP) Update</p>
 <p>Sonoma County Community Base Map</p> <p>The Sonoma County Community Base Map is a Story Map that guides a user through all th...</p>	 <p>Sonoma County Wildfire Risk Index with Fire...</p> <p>A map showing the Wildfire Risk Index for Sonoma County along with recent fire history.</p>	 <p>Evacuation Basic Map - Map</p> <p>Sonoma County Evacuation Map for Embedded Apps</p>	 <p>How To Use This Hub Site</p> <p>A tutorial on how to use Sonoma County's CWPP Hub Site, Community Base Map, and...</p>



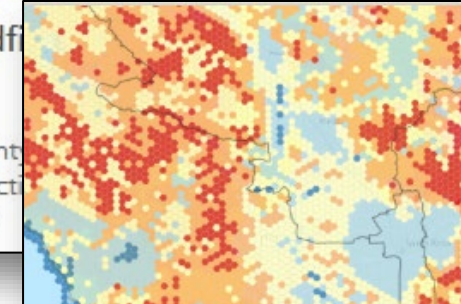
Sonoma County CWPP Project Entry Portal

Enter Wildfire Risk Reduction Projects to be considered for inclusion on the Sonoma Cou



Sonoma County Wildfire Risk Index

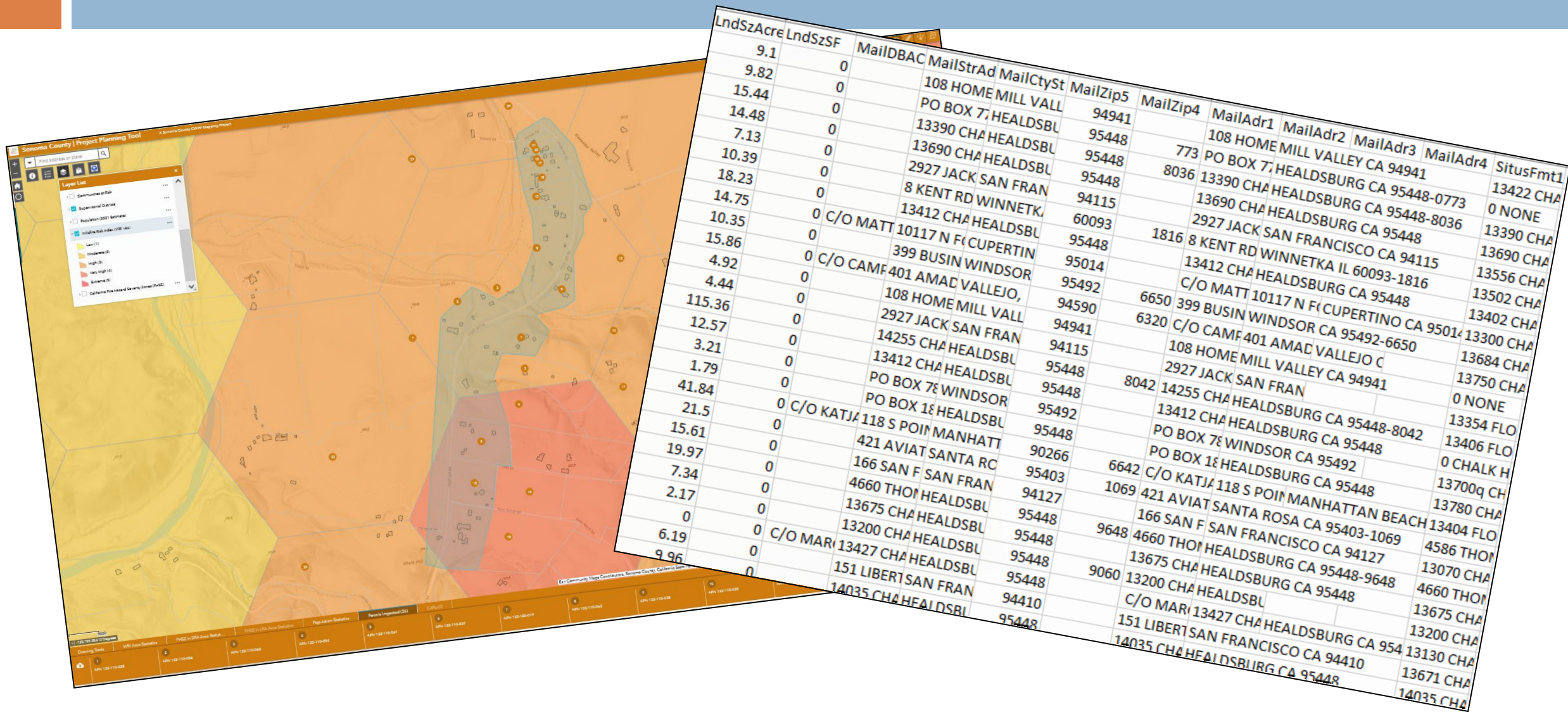
Part of the Sonoma County Community Wildfire Protection Plan (CWPP) Update



Project Planning Tool

Draw prospective project areas in the Project Planning Tool application and be rewarde...

Project Planning Tool—Statistics and Parcel Info!



Hub Site Resources

Grant Opportunities

AG + OPEN SPACE
LOCALS COUNTY

WHO WE ARE | HOW WE WORK | **OUR IMPACT** | GET INVOLVED | PROTECT YOUR LAND

PROTECTED LANDS

Vegetation Management Grant Program
English

Looking for technical assistance for project development?
The North Coast Resource Partnership (NCRP) is pleased to offer a Request for Proposals for Technical Assistance to Tribes and economically disadvantaged communities to support project development and grant applications for certain grant programs. Proposals will be accepted on a rolling basis via the NCRP Project Tracker and are reviewed quarterly: February 1, May 1, August 1, November 1. For application assistance, reference NCRP Technical Assistance Application.

THE PARTNERSHIP | THE REGION | PROJECTS | PLANNING | RESOURCES | DATA | CALIFORNIA | WILDFIRE | ABOUT

THE NORTH COAST RESOURCE PARTNERSHIP
The North Coast Resource Partnership enhances the watersheds and communities of the North Coast region and the quality of life for all.
THE PARTNERSHIP

Wildfire Information and Resources

HOW TO PREPARE YOUR HOME FOR WILDFIRES

WILDFIRE HOME RETROFIT GUIDE
NEW! An updated home retrofit guide from the folks that brought us Living with Fire.

Adapts
SoCoAdapts is a multi-year, multi-faceted project to help residents prepare their families, their homes, and their property to better survive wildfire.

Preparing for Wildfire
From the Insurance Institute for Business & Home Safety (IBHS), check out their Wildfire Ready tips for homes and businesses.

Fire Safe Sonoma
Fire Safe Sonoma's website has a wealth of information. Be sure to sign up for their newsletter to find out about all their great workshops, meetings, and webinars.

Creating Wildfire Adapted Homes and Landscapes
Specific advice from local experts on how to retrofit homes and modify landscaping to better withstand wildfire.

Local CWPPs

Local CWPPs
Communities across the county have created their own local CWPPs. Local CWPPs usually have much more specific information about conditions in the area, local values, and ongoing projects and opportunities to get involved. If you live in one of the communities below, take the time to read YOUR local CWPP!

Bennett Ridge October 2018 Download	Camp Meeker December 2021 Download	City of Santa Rosa September 2020 Download
Cloverdale July 2022 Download	Fitch Mountain March 2019 Download	Fort Ross March 2019 Download
Gehricke Road In progress, coming soon.	Glen Ellen In progress, coming soon.	Grove Street September 2020 Download
Healdsburg March 2023 Download	Hollydale/Canyon/Terrace In progress, coming soon.	Mayacamas Community April 2019 Download
Mill Creek June 2020 Download	North East Geyserville July 2022 Download	Occidental November 2020 Download
The Sea Ranch May 2010 Download	The Springs In progress, coming soon.	Upper Mark West Watershed November 2018 Download

CWPP Project List

- Having projects listed in a CWPP is a requirement for many grant programs.
- The CWPP Project Entry Portal is the place to enter a project to have it listed on the CWPP Project List.
- The CWPP Project List is in Appendix A of the document and on the hub.



Sonoma County Project Entry Portal and CWPP Project List

Wildfire Risk Reduction Projects entered & considered for CWPP project list inclusion

April 7, 2023

[Project Entry Portal \(PEP\)](#) [2021 Project List](#) [2021 Project Map](#)

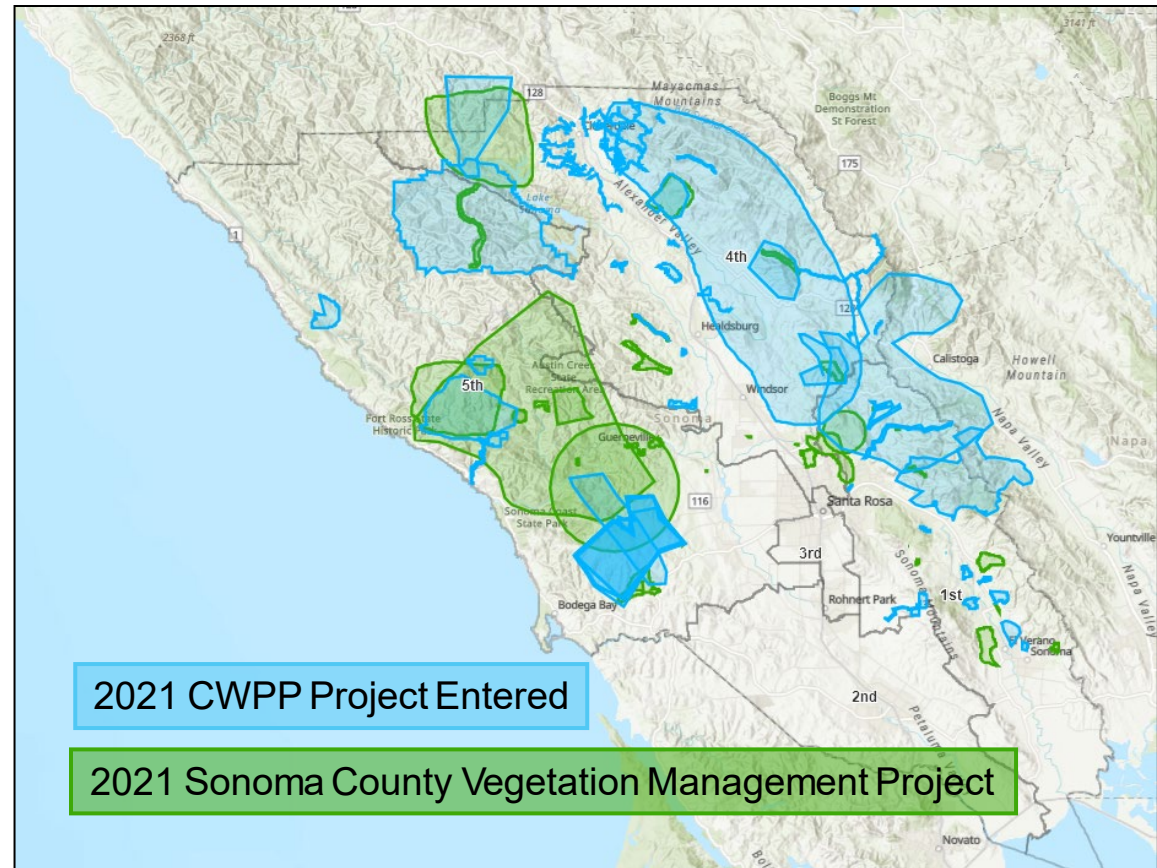
Project Entry Portal (PEP)

The Project Entry Portal is where groups, agencies or landowners can enter Wildfire Risk Reduction Projects to be considered for inclusion on the Sonoma County CWPP Project list. The county-wide Project List and Project Map provides a central place where wildfire risk reduction projects can be seen so that trends and gaps, and opportunities for collaboration, can be identified. This will ultimately help prioritize treatment areas and project types, and encourage the implementation of high value projects. Additionally, many grant programs require that projects are listed in a CWPP to be considered for funding. Here's your opportunity to list your project in the Sonoma County CWPP!

[CLICK HERE TO OPEN PEP](#)

CWPP Project Portal and Project List

- 2021 projects
- Portal is a work in progress, revisions ongoing based on experience, comments and needs.
 - ▣ New survey format
 - ▣ Ranking System
 - ▣ Public lands
- Screening process added
 - ▣ Public lands and Priorities



CWPP Risk Reduction Priorities

- Access & Egress
- Access and Functional Needs and Low Income Communities
- Biomass Utilization
- Capacity Building
- Community Education
- Community Level Planning
- Community Preparedness
- Critical Infrastructure
- Defensible Space
- Ecosystem Health
- Fire Service Support
- Fuel Breaks
- Ignition Resistant Construction and Retrofit
- Post-Fire Mitigation
- Workforce Development and Training

About the Project Entry Portal (PEP)

Long or Short Survey?

SHORT Survey: Use the short survey if your project is in the concept phase and you have not yet developed specific treatment plans, budget, or defined project boundaries. The short form has fewer questions and should be easier and faster to complete.

For projects that are underway or complete, you may use either the Short Survey or Long Survey,

Short Survey

Long Survey - Required for VMGP Proposal

Who can enter projects?

Group Type*

Describe your organization type:

- Organization with Taxpayer ID (Non-profit, corporation, LLC, etc.)
- Governmental Organization (includes federal, state, counties, cities, special districts and Tribal governments)
- Informal Group without Taxpayer ID (i.e., an organized group such as a group of neighbors)
- Individual Landowner - Only the landowner may submit a project for their property

Organization with Taxpayer ID

Organization with Taxpayer ID

Governmental Organization

Informal Group with no Taxpayer ID

Individual Landowner

e*

or organization (e.g., department head, d

owner, please enter "None" below.

WE WILL USE YOUR INFORMATION PUBLICLY

Project and Treatment Types

□ Project Types

- ▣ Defensible Space
- ▣ Roadside Fuels Treatment
- ▣ Wildland Fuels Treatment
- ▣ Post-fire Mitigation
- ▣ Harden Structures
- ▣ Critical Infrastructure
- ▣ Community Outreach & Education
- ▣ Planning

Wildland Fuels Treatment*

Modify wildland fuels to reduce fire risk and enhance ecosystem services.

Yes

Wildland Fuels Treatment Types*

Please indicate what treatment type(s) you are considering for your project.

Click all that apply.

Mechanical

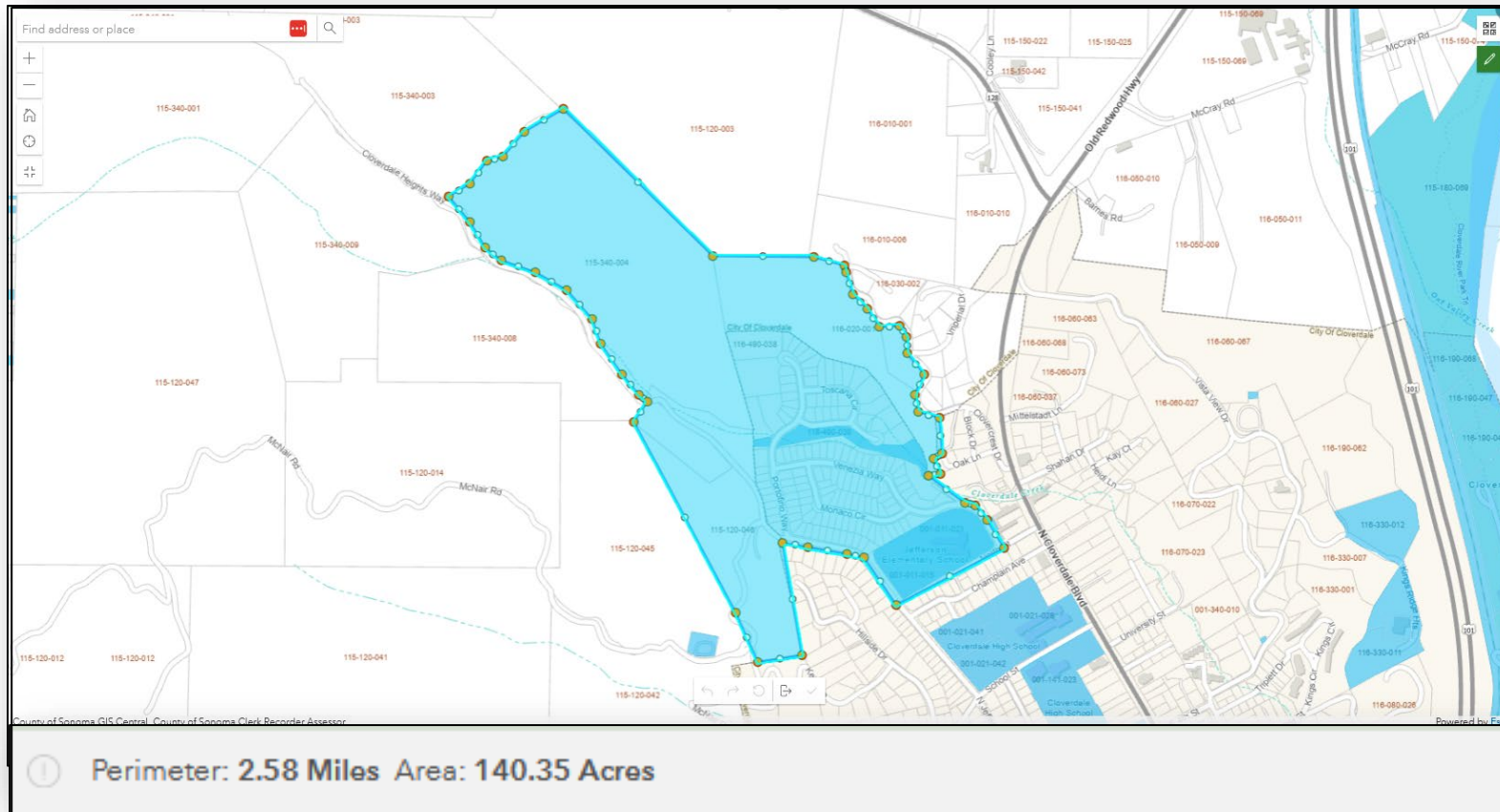
Hand Crews

Prescribed Grazing

Prescribed Fire or Cultural Burning

Herbicides

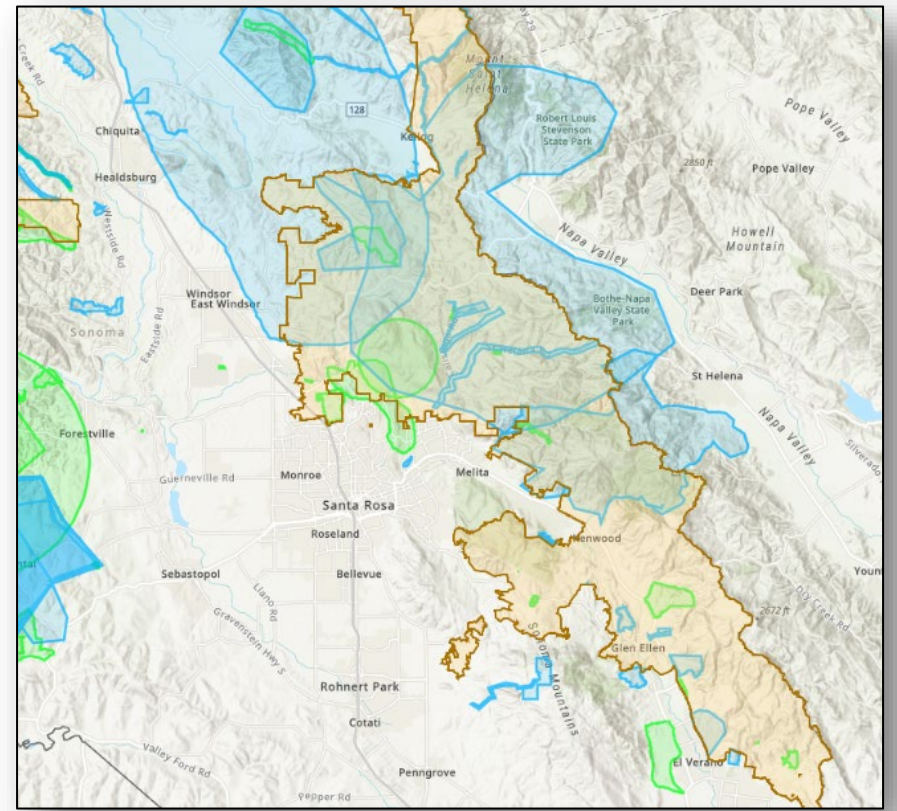
Project Mapping



- GIS Values returned
 - Project Location
 - Supervisor District
 - Project Acres
 - Number of Parcels
 - Number of Structures
 - Public Lands

Why It's Important

- Trend and Gap Analysis
 - ▣ Are geographic areas over-or-underrepresented?
 - ▣ Large-scale vegetation versus defensible space and structure hardening?
 - ▣ Are Access and Functional Needs populations and low-income areas adequately represented?
- Governor's Wildfire and Forest Resilience Taskforce Action Plan:
 - ▣ *“Increase local and regional governments’ capacity to build and maintain a pipeline of forest health and fire prevention projects.”*
- This process will encourage collaboration, provide for technical assistance.



Next Steps

- Administratively incorporate CWPP into the Sonoma County Annex of the 2021 Sonoma County Multi-Jurisdictional Hazard Mitigation Plan (MJHMP). The MJHMP and CWPP will also be incorporated by reference into the upcoming update of the General Plan Safety Element.
- Continuing project screening and Project List updates.
- Ongoing Hub Site updates:
 - ▣ Link to Local CWPPs
 - ▣ Add new tools such as Wildfire Resilience Planner as they become available
 - ▣ Educational materials, new research...
 - ▣ Please let us know if there is something you want to add!
- Thank you!

Questions?

